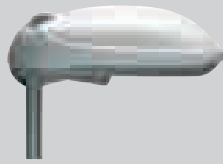
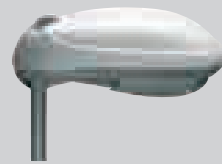


ROADS AND URBAN AREAS

AVENUE



CUT-OFF



SEMI CUT-OFF

INDY 1

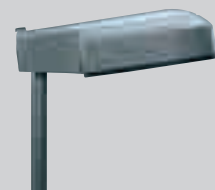


CUT-OFF

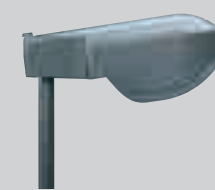


SEMI CUT-OFF

INDY 2



CUT-OFF



SEMI CUT-OFF

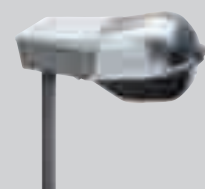
CITY



IP 23



PC BOWL



PMMA BOWL

PLACE



PLACE

GLOB



GLOB

## SELECTION GUIDE

DISCHARGE LAMPS									
MERCURY	50		80		125		250		
METAL HALIDES							250	400	
SODIUM	50	70		100		150		250	400
AVENUE									
AVENUE									
INDY 2									
INDY 2									
INDY 1									
INDY 1									
CITY									
PLACE									
GLOB									

FLUORESCENT SOURCES			
MAINS VOLTAGE	60	85	120

INCANDESCENT LAMPS		
MAINS VOLTAGE	60	100
PLACE		
GLOB		

APPLICATIONS										
TYPE	PARK AREAS	PEDESTRIAN AREAS	EXTERNAL AREAS OF BUILDINGS	CAR PARKS						
APPLICATION TYPE					NEIGHBOURHOOD CITY	LOCAL CITY	INTERNATIONAL LOCAL CITY	FAST CITY	SECONDARY OUT-OF-TOWN	MAJOR OUT-OF-TOWN MOTORWAY
AVENUE										
INDY 2										
INDY 1										
HORUS 3 * ROAD OPTICS										
CITY										
EXTRO *										
PLACE										
GLOB										

\* See the "FLOODLIGHTS" and "OUTDOOR LIGHTING" sections for HORUS 3 and EXTRO, respectively.