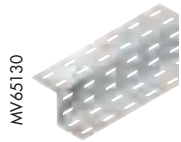


SYSTEM FOR LIGHT LOADS

PROFILES



MV65130

Z-TYPE PROFILE - 3 M

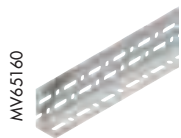
Code	Dimension AxBxC (mm)	Length (mm)	Pack Carton
FINISH: Z 275			
MV 65 130	30x30x30	300	30
MV 65 131	30x60x30	300	30
MV 65 133	60x60x60	300	30
FINISH: GAC			
MV 65 230	30x30x30	300	30
MV 65 231	30x60x30	300	30
MV 65 233	60x60x60	300	30



MV65134

OMEGA-TYPE PROFILE - 3 M

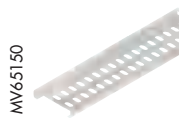
Code	Dimension AxBxC (mm)	Length (mm)	Pack Carton
FINISH: Z 275			
MV 65 134	30x30x30	300	30
MV 65 135	30x30x60	300	30
FINISH: GAC			
MV 65 234	30x30x30	300	30
MV 65 235	30x30x60	300	30



MV65160

DIVIDER - 3 METRES

Code	Dimension AxBxC (mm)	Length (mm)	Pack Carton
FINISH: Z 275			
MV 65 160	30x30	300	10
MV 65 162	40x40	300	10
MV 65 163	68x40	300	10
FINISH: GAC			
MV 65 260	30x30	300	10
MV 65 262	40x40	300	10
MV 65 263	68x48	300	10



MV65150

TELEX RAIL - 2 METRES

Code	Width (mm)	Shape	Length (mm)	Pack Carton
FINISH: Z 275				
MV 65 150	30	C	200	10
MV 65 151	50	C	200	10
MV 65 152	75	C	200	20
FINISH: GAC				
MV 65 250	30	C	200	10
MV 65 251	50	C	200	10
MV 65 252	75	C	200	20



MV65124

FLAT STRIP - LENGTH: 1 METRE

Code	Description	Width (mm)	Finish	Pack Carton
MV 65 124	Perforated strip	19	Z 275	30
MV 65 224	Perforated strip	19	GAC	30

FIXING BRACKET

CENTRAL SUPPORT FOR BRN HIGH BAY

Code	Length (mm)	Pack Carton
FINISH: Z 275		
MV 41 150	65	50
MV 41 151	95	50
MV 41 152	125	50
FINISH: GAC		
MV 41 250	65	50
MV 41 251	95	50
MV 41 252	125	50

OMEGA-TYPE FIXING BRACKET

MV62100



OMEGA-TYPE PROFILE

Code	Length (mm)	Load admit. on brack DaN/m	Pack Carton
FINISH: Z 275			
MV 62 100	410	2	32
MV 62 101	510	2	25
MV 62 102	610	2	25
FINISH: GAC			
MV 62 200	410	2	32
MV 62 201	510	2	25
MV 62 202	610	2	25
FINISH: STAINLESS STEEL			
MV 62 600	410	2	32
MV 62 601	510	2	25
MV 62 602	610	2	25

MV60100



OMEGA-TYPE FIXING BRACKET

Code	Length (mm)	Max load	Pack Carton
FINISH: Z 275			
MV 60 100	110	50	50
MV 60 101	210	50	50
MV 60 102	310	30	40
MV 60 113	410	70	12
MV 60 114	510	100	8
MV 60 115	610	130	6
FINISH: GAC			
MV 60 200	110	50	50
MV 60 201	210	50	50
MV 60 202	310	30	40
MV 60 213	410	70	12
MV 60 214	510	100	8
MV 60 215	610	130	6
FINISH: STAINLESS STEEL 304			
MV 60 600	110	50	50
MV 60 601	210	50	50
MV 60 612	310	130	25
MV 60 613	410	130	12
MV 60 614	510	130	8
MV 60 615	610	130	6

MV66122



BOLT FOR OMEGA-TYPE FIXING BRACKET

Code	Description	Dimension	Accessories supplied	Pack Carton
FINISH: BICHRO				
MV 66 122	TRCC bolt+nut	M10x30	Nut + n. 1 washer	100
MV 66 123	TRCC bolt+nut	M10x60	Nut + n. 1 washer	100
FINISH: DACRO				
MV 66 222	TRCC bolt+nut	M10x30	Nut + n. 1 washer	100
MV 66 223	TRCC bolt+nut	M10x60	Nut + n. 1 washer	100

TO BE CONTINUED ON NEXT PAGE

NEW

TECHNICAL CHARACTERISTICS FROM PAGE 1054

(TO BE CONTINUED)

BOLT FOR OMEGA-TYPE FIXING BRACKET

Code	Description	Dimension	Accessories supplied	Pack Carton
FINISH: STAINLESS STEEL				
MV 66 622	TRCC bolt+nut	M10x30	Nut + n. 1 washer	100
MV 66 623	TRCC bolt+nut	M10x60	Nut + n. 1 washer	100

MV62110



OMEGA-TYPE C PENDANT FIXING BRACKET

Code	Dimension AxBxC (mm)	Max load	Pack Carton
FINISH: Z 275			
MV 62 110	105 x 115 x 95	22	30
MV 62 111	105 x 115 x 195	22	30
MV 62 112	105 x 115 x 295	14	30
MV 62 113	105 x 215 x 95	20	30
MV 62 114	105 x 215 x 195	20	30
MV 62 115	105 x 215 x 295	13	20
MV 62 116	105 x 265 x 95	20	30
MV 62 117	105 x 265 x 195	20	30
MV 62 118	105 x 265 x 295	13	24
FINISH: GAC			
MV 62 210	105 x 115 x 95	22	30
MV 62 211	105 x 115 x 195	22	30
MV 62 212	105 x 115 x 295	14	30
MV 62 213	105 x 215 x 95	20	30
MV 62 214	105 x 215 x 195	20	30
MV 62 215	105 x 215 x 295	13	20
MV 62 216	105 x 265 x 95	20	30
MV 62 217	105 x 265 x 195	20	30
MV 62 218	105 x 265 x 295	13	24
FINISH: STAINLESS STEEL			
MV 62 610	105 x 115 x 95	22	30
MV 62 611	105 x 115 x 195	22	30
MV 62 612	105 x 115 x 295	14	30
MV 62 613	105 x 215 x 95	20	30
MV 62 614	105 x 215 x 195	20	30
MV 62 615	105 x 215 x 295	13	20
MV 62 616	105 x 265 x 95	20	30
MV 62 617	105 x 265 x 195	20	30
MV 62 618	105 x 265 x 295	13	24

A= Height; B= Length; C=Width.

MV64401



WALL/CEILING FIXING PLATE FOR OMEGA TYPE PROFILES

Code	Description	Finish	Pack Carton
MV 64 401	Mounting plate	Bichro	100

MV64105



OMEGA-TYPE SPACER ON MAVISTRUT NOTCHED RUNNER

Code	Description	Finish	Pack Carton
MV 64 105	Mounting plate	Z 275	50

NOTES: for mounting on MAVISTRUT 41x29 profiles, use:

nut with spring 41x29 M8 (MV66152) and hexagonal-head screw HM 8x25 (MV66133);

as an alternative, use: spring nut 41x29 M10 (MV66153) and hexagonal-head screw HM10x25 (MV66183).

For mounting on MAVISTRUT 41x41 profiles, use:

spring nut 41x41 M8 (MV66157) and hexagonal-head screw HM 8x25 (MV66133) or hexagonal head screw HM 8x40 (MV66134);

as an alternative, use: spring nut 41x41 M10 (MV66158) and hexagonal-head screw HM 10x25 (MV66136) or hexagonal-head screw HM 10x50 (MV66138).

NEW

TECHNICAL CHARACTERISTICS FROM PAGE 1054

MV60120



CURVED BRACKET FOR BRN AND BFR

Code	Dimension AxBxC (mm)	Max load	Pack Carton
FINISH: Z 275			
MV 60 120	50 x 50 x 70	20	100
MV 60 121	50 x 100 x 70	15	100
MV 60 122	50 x 150 x 70	10	100
FINISH: GAC			
MV 60 220	50 x 50 x 70	20	100
MV 60 221	50 x 100 x 70	15	100
MV 60 222	50 x 150 x 70	10	100

A= Height; B= Length; C=Width.



BRN LENGTH 65/95 AND BFR LENGTH 50/100 SUSPENSION BRACKET

Code	Height	Finish	Pack Carton
APPLICATION: BRN			
MV 64 160	35/50/65	Z 275	50
MV 64 260		GAC	50
APPLICATION: BFR			
MV 64 161	30/60	Z 275	50
MV 64 261	30/60	GAC	50
MV 64 661	30/60	Stainless steel	50

ACCESSORIES

MV65124



FLAT STRIP - LENGTH: 1 METRE

Code	Description	Width (mm)	Finish	Pack Carton
MV 65 124	Perforated strip	19	Z 275	30
MV 65 224	Perforated strip	19	GAC	30

MV64670



AISI 304 STAINLESS STEEL SUPPORT

Code	Length (mm)	Pack Carton
MV 64 670	100	30
MV 64 671	200	30
MV 64 672	300	30
MV 64 673	400	30
MV 64 674	500	25

Fixing with stainless steel bolt TRCC 6x20 MV66620 and stainless steel counter clamping washer MV51621.

CABLE TRAY FIXING BRACKET

MV51100



AUTOMATIC FIXING CLIPS (BOLTLESS) FOR BFR ON OMEGA BRACKET

Code	Description	Finish	Pack Carton
MV 51 100	FILMATIC fixing clip for OMEGA fixing bracket	Z 275	10
MV 51 600	FILMATIC fixing clip for OMEGA fixing bracket	Stainless steel	10

MV66162



THREADED ROD - LENGTH: 1 METRE

Code	Ø (mm)	Pack Carton
FINISH: EZ		
MV 66 161	6	1
MV 66 162	8	1
MV 66 163	10	1
FINISH: STAINLESS STEEL		
MV 66 661	6	1
MV 66 662	8	1
MV 66 663	10	1

NEW

TECHNICAL CHARACTERISTICS FROM PAGE 1054

MV66166



SLEEVE

Code	Dimension	Pack Carton
FINISH: EZ		
MV 66 166	M6	50
MV 66 167	M8	50
FINISH: STAINLESS STEEL		
MV 66 666	M6	50
MV 66 667	M8	50

MV66141



NOTCHED COLLAR NUT

Code	Dimension	Pack Carton
FINISH: EZ		
MV 66 141	M6	100
MV 66 142	M8	100
MV 66 143	M10	100
FINISH: STAINLESS STEEL		
MV 66 641	M6	100
MV 66 642	M8	100
MV 66 643	M10	100

HU NUT

Code	Dimension	Pack Carton
FINISH: EZ		
MV 66 147	M8	100
MV 66 148	M10	100
FINISH: STAINLESS STEEL		
MV 66 647	M8	100
MV 66 648	M10	100

WASHERS

Code	Dimension	Pack Carton
FINISH: EZ		
MV 66 176	M6	100
MV 66 177	M8	100
MV 66 178	M10	100
FINISH: STAINLESS STEEL		
MV 66 676	M6	100
MV 66 677	M8	100
MV 66 678	M10	100

SYSTEM FOR MEDIUM LOADS

40-TYPE SUPPORT

MV64611



VARIABLE FLANGE FOR CEILING FIXING, 40-TYPE

Code	Description	Pack Carton
FINISH: Z 275		
MV 64 111	Fixing angle plate	20
FINISH: GAC		
MV 64 211	Fixing angle plate	20
FINISH: STAINLESS STEEL		
MV 64 611	Fixing angle plate	20

MV64110



DOUBLE FLANGE FOR 40-TYPE CEILING FIXING

Code	Description	Pack Carton
FINISH: Z 275		
MV 64 110	Fixing U plate	20
FINISH: GAC		
MV 64 210	Fixing U plate	20

TO BE CONTINUED ON NEXT PAGE

NEW

TECHNICAL CHARACTERISTICS FROM PAGE 1054

(TO BE CONTINUED)

DOUBLE FLANGE FOR 40-TYPE CEILING FIXING

Code	Description	Pack Carton
FINISH: STAINLESS STEEL		
MV 64 610	Fixing U plate	20

MV64113



ADJUSTABLE FLANGE FOR 40-TYPE BRACKET

Code	Description	Pack Carton
FINISH: Z 275		
MV 64 113	Adjustable plate	25
FINISH: GAC		
MV 64 213	Adjustable plate	25
FINISH: STAINLESS STEEL		
MV 64 613	Adjustable plate	25

MV62120



40-TYPE PROFILE

Code	Thickness (mm)	Length (mm)	Pack Carton
FINISH: Z 275			
MV 62 120	1.5	250	60
MV 62 121	1.5	500	10
MV 62 122	1.5	1000	10
MV 62 123	2	1500	6
MV 62 124	2	2000	6
FINISH: GAC			
MV 62 220	1.5	250	60
MV 62 221	1.5	500	10
MV 62 222	1.5	1000	10
MV 62 223	2	1500	6
MV 62 224	2	2000	6
FINISH: STAINLESS STEEL			
MV 62 620	1.5	250	60
MV 62 621	1.5	500	10
MV 62 622	1.5	1000	10
MV 62 623	2	1500	10
MV 62 624	2	2000	10

MV60130



40-TYPE CANTILEVER BRACKET

Code	Length (mm)	Max load	Pack Carton
FINISH: Z 275			
MV 60 130	150	85	100
MV 60 131	200	85	80
MV 60 132	250	85	50
MV 60 133	350	100	25
MV 60 134	450	90	20
MV 60 135	550	85	18
FINISH: GAC			
MV 60 230	150	85	100
FINISH: Z 275			
MV 60 136	600	80	16
FINISH: GAC			
MV 60 231	200	85	80
MV 60 232	250	85	50
MV 60 233	350	100	25
MV 60 234	450	90	20
MV 60 235	550	85	18
MV 60 236	600	80	16

TO BE CONTINUED ON NEXT PAGE

(TO BE CONTINUED)

40-TYPE CANTILEVER BRACKET

Code	Length (mm)	Max load	Pack Carton
FINISH: STAINLESS STEEL			
MV 60 630	150	85	100
MV 60 631	200	85	80
MV 60 632	250	85	50
MV 60 633	350	100	25
MV 60 634	450	90	20
MV 60 635	550	85	18
MV 60 636	600	80	16



MV60141

75-TYPE DOUBLE BRACKET

Code	Description	Length (mm)	Thickness (mm)	Max load	Pack Carton
FINISH: Z 275					
MV 60 141	75 Bracket	150	1.2	60	80
MV 60 143	75 Bracket	250	2	130	40
FINISH: GAC					
MV 60 241	75 Bracket	150	1	60	80
MV 60 243	75 Bracket	250	1.5	130	40



MV60151

BFR-TYPE BRACKET

Code	Length (mm)	Max load	Pack Carton
FINISH: Z 275			
MV 60 151	100	80	50
MV 60 152	150	60	50
MV 60 153	200	45	50
FINISH: GAC			
MV 60 251	100	80	50
MV 60 252	150	60	50
MV 60 253	200	45	50
FINISH: STAINLESS STEEL			
MV 60 651	100	80	50
MV 60 652	150	60	50
MV 60 653	200	45	50

NOTE: for mounting on profile type MAVISTRUT 41x29, use:
nut with spring 41x29 M8 (MV66152) and hexagonal-head screw HM 8x25 (MV66133).
For mounting on profile type MAVISTRUT 41x41, use:
nut with spring 41x41 M8 (MV66157) and hexagonal-head screw HM 8x25 (MV66133) or HM 8x40 (MV66134).

ACCESSORIES



MV64112

40-TYPE PROFILE CONNECTION FLANGE

Code	Description	Pack Carton
FINISH: Z 275		
MV 64 112	Spacing plate for	100
FINISH: GAC		
MV 64 212	Spacing plate for	100
FINISH: STAINLESS STEEL		
MV 64 612	Spacing plate for	100



MV66100

BOLTS

Code	Description	Dimension	Accessories supplied	Pack Carton
FINISH: BICHRO				
MV 66 100	Bolt + nut	M6x10	Flanged nut	100
MV 66 101	Bolt + nut	M6x14	Flanged nut	100
MV 66 403	Bolt + nut	M6x20	Flanged nut	100
FINISH: DACRO				
MV 66 201	Bolt + nut	M6x14	Flanged nut	100
MV 66 200	Bolt + nut	M6x10	Flanged nut	100
MV 66 203	Bolt + nut	M6x20	Flanged nut	100

TO BE CONTINUED ON NEXT PAGE

NEW

TECHNICAL CHARACTERISTICS FROM PAGE 1054

(TO BE CONTINUED)

BOLTS

Code	Description	Dimension	Accessories supplied	Pack Carton
FINISH: STAINLESS STEEL				
MV 66 600	Bolt + nut	M6x10	Flanged nut	100
MV 66 601	Bolt + nut	M6x14	Flanged nut	100

MV64114



40-TYPE FIXING ROD

Code	Description	Pack Carton
FINISH: EZ		
MV 64 114	Fixing rod 6 x 70 type 40	100
FINISH: STAINLESS STEEL		
MV 64 614	Fixing rod 6 x 70 type 40	100

SYSTEM FOR HEAVY LOADS

MAVISTRUT-TYPE FIXING BRACKET

MV63103



MAVISTRUT NOTCHED PENDANT WITH WELDED FIXING PLATE

Code	Description	Type	Characteristics	Length (mm)	Pack Carton
FINISH: Z 275					
MV 63 101	41x29 pendant	Simple	Welded U plate	390	14
MV 63 103	41x29 pendant	Simple	Welded U plate	630	14
MV 63 105	41x29 pendant	Double	Welded U plate	390	10
MV 63 107	41x29 pendant	Double	Welded U plate	630	10
MV 63 140	41x41 pendant	Simple	Welded gusset	550	10
MV 63 110	41x41 pendant	Simple	Welded gusset	790	10
MV 63 111	41x41 pendant	Simple	Welded gusset	1030	6
MV 63 113	41x41 pendant	Simple	Welded gusset	1510	6
MV 63 145	41x41 pendant	Double	Welded gusset	550	6
MV 63 114	41x41 pendant	Double	Welded gusset	790	6
MV 63 115	41x41 pendant	Double	Welded gusset	1030	4
MV 63 117	41x41 pendant	Double	Welded gusset	1510	4
FINISH: GAC					
MV 63 201	41x29 pendant	Simple	Welded U plate	390	14
MV 63 203	41x29 pendant	Simple	Welded U plate	630	14
MV 63 205	41x29 pendant	Double	Welded U plate	390	10
MV 63 207	41x29 pendant	Double	Welded U plate	630	10
MV 63 240	41x41 pendant	Simple	Welded gusset	550	10
MV 63 210	41x41 pendant	Simple	Welded gusset	790	10
MV 63 211	41x41 pendant	Simple	Welded gusset	1030	6
MV 63 213	41x41 pendant	Simple	Welded gusset	1510	6
MV 63 245	41x41 pendant	Double	Welded gusset	550	6
MV 63 214	41x41 pendant	Double	Welded gusset	790	6
MV 63 215	41x41 pendant	Double	Welded gusset	1030	4
MV 63 217	41x41 pendant	Double	Welded gusset	1510	4

NOTES: 41x29 supports suitable for MAVISTRUT type brackets up to 345 mm, flat 41x29 cantilever brackets, BFR type brackets and OMEGA type brackets; 41x41 supports suitable for all MAVISTRUT type brackets, flat 41x41 and 41x29 cantilever brackets, BFR type brackets and OMEGA type brackets.

MV64230



MAVISTRUT FLANGE WITH BOLTS FOR PENDANT FIXING

Code	Description	Accessories supplied	Pack Carton
FINISH: GAC			
MV 64 230	Bolted fixing plate 41x29	N. 2 bolt TRCC 8x25	25
MV 64 240	41x41 Bolted fixing plate	N. 1 counter plate N. 2 bolt HM 10x60	15
MV 64 241	Counter plate	N. 2 bolt HM 10x110	25

APPLICATIONS: MV64230 fixing of profiles MAVISTRUT 41x29 type;
MV64240 fixing of simple profiles MAVISTRUT 41x41 type;
MV64241 coupled with MV64240 allows you to fix the double profiles MAVISTRUT 41x41 type.

NEW

TECHNICAL CHARACTERISTICS FROM PAGE 1054

MV65180



MAVISTRUT NOTCHED PROFILE

Code	Description	Length (mm)	Pack Carton
FINISH: Z 275			
MV 65 180	41x29 Serrated profile	240	60
MV 65 171	41x29 Serrated profile	1030	20
MV 65 172	41x29 Serrated profile	1990	10
MV 65 173	41x29 Serrated profile	3030	8
MV 65 174	41x41 Serrated profile	1030	20
MV 65 175	41x41 Serrated profile	1990	10
MV 65 176	41x41 Serrated profile	3030	8
FINISH: GAC			
MV 65 280	41x29 Serrated profile	240	60
MV 65 271	41x29 Serrated profile	1030	20
MV 65 272	41x29 Serrated profile	1990	10
MV 65 273	41x29 Serrated profile	3030	8
MV 65 274	41x41 Serrated profile	1030	20
MV 65 275	41x41 Serrated profile	1990	10
MV 65 276	41x41 Serrated profile	3030	8

APPLICATIONS: 41x29 profiles suitable for MAVISTRUT type brackets up to 345 mm, flat 41x29 cantilever brackets, BFR type brackets and OMEGA type brackets; 41x41 profiles suitable for all MAVISTRUT type brackets, flat 41x41 and 41x29 cantilever brackets, BRF type brackets and OMEGA type brackets.

MV61100



MAVISTRUT CLIP-ON CANTILEVER BRACKET

Code	Length (mm)	Max load	Pack Carton
FINISH: Z 275			
MV 61 100	145	110	50
MV 61 101	245	100	36
MV 61 102	345	100	25
MV 61 103	445	171	16
MV 61 104	545	150	14
MV 61 105	595	121	14
MV 61 106	645	112	14
FINISH: GAC			
MV 61 200	145	110	50
MV 61 201	245	100	36
MV 61 202	345	100	25
MV 61 203	445	171	16
MV 61 204	545	150	14
MV 61 205	595	121	14
MV 61 206	645	112	14

APPLICATIONS: quick coupling brackets on MAVISTRUT type profiles without the help of accessories and without using tools.

FIXING BRACKET

MV61231



BRACKET 41X29 WITH FLAT ENDS

Code	Length (mm)	Max load	Finish	Pack Carton
MV 61 231	150	270	GAC	20
MV 61 232	200	200	GAC	20
MV 61 233	300	180	GAC	15
MV 61 234	400	150	GAC	15

NOTES: for mounting on profile type MAVISTRUT 41x29, use:
nut with spring 41x29 M8 (MV66152) and hexagonal-head screw HM 8x25 (MV66133);
as an alternative, use: nut with spring 41x29 M10 (MV66153) and hexagonal-head screw HM 10x25 (MV66136).

MV61241



BRACKET 41X41 WITH FLAT ENDS

Code	Length (mm)	Max load	Finish	Pack Carton
MV 61 241	150	550	GAC	20
MV 61 242	200	450	GAC	20
MV 61 243	300	350	GAC	15
MV 61 244	400	300	GAC	15
MV 61 245	500	270	GAC	12
MV 61 246	600	220	GAC	12

NOTES: for mounting on profile type MAVISTRUT 41x41, use:
nut with spring 41x41 M8 (MV66157) and hexagonal-head screw HM 8x25 (MV66133) or HM 8x40 (MV66134);
As an alternative, use: nut with spring 41x41 M10 (MV66158) and hexagonal-head screw HM 10x25 (MV66136) or HM 10x50 (MV66138).

SP RANGE

MV61255



DOUBLE BRACKET 41X41 WITH FLAT ENDS

Code	Length (mm)	Max load	Finish	Pack Carton
MV 61 255	500	450	GAC	10
MV 61 256	600	380	GAC	10

NOTES: for mounting on profile type MAVISTRUT 41x41, use: nut with spring 41x41 M8 (MV66157) and hexagonal-head screw HM 8x25 (MV66133) or HM 8x40 (MV66134);

as an alternative, use nut with spring 41x41 M10 (MV66158) and hexagonal-head screw HM 10x25 (MV66136) or HM 10x50 (MV66138).

The BFR cable tray can be fastened on the bracket using the universal counter clamping washer (MV51420),

hexagonal-head screw HM 6x20 (MV66132) and spring nut 41x41 M6 (MV66156).

The BRN cable tray can be fastened on the bracket using the hexagonal-head screw HM 6x20 (MV66132) and spring nut 41x41 M6 (MV66156).

FIXING BRACKET TYPE TRISIGMA

FIXING BRACKET L 121 TYPE TRISIGMA

Code	Length (mm)	Max load	Finish	Pack Carton
MV 61 111	245	130	Z 275	12
MV 61 113	445	171	Z 275	15
MV 61 114	545	150	Z 275	14
MV 61 115	600		Z 275	14
MV 61 112	345	130	Z 275	16

ACCESSORIES

HM BOLT

Code	Description	Dimension	Accessories supplied	Pack Carton
FINISH: BICHRO				
MV 66 113	Hexagon head screw	M10x20	Nut + n. 2 washers	50
MV 66 116	Hexagon head screw	M10x25	Nut + n. 2 washers	50
MV 66 115	Hexagon head screw	M12x30	Nut + n. 2 washers	100
FINISH: DACRO				
MV 66 213	Hexagon head screw	M10x20	Nut + n. 2 washers	50
MV 66 216	Hexagon head screw	M10x25	Nut + n. 2 washers	50
MV 66 215	Hexagon head screw	M12x30	Nut + n. 2 washers	100



HM BOLT

Code	Description	Dimension	Accessories supplied	Pack Carton
FINISH: BICHRO				
MV 66 114	Hexagon head screw	M10x30	Nut + n. 1 washer	100
MV 66 118	Hexagon head screw	M10x40	Nut + n. 1 washer	100
MV 66 117	Hexagon head screw	M10x110	Nut + n. 1 washer	100
FINISH: DACRO				
MV 66 214	Hexagon head screw	M10x30	Nut + n. 1 washer	100
MV 66 218	Hexagon head screw	M10x40	Nut + n. 1 washer	100
MV 66 217	Hexagon head screw	M10x110	Nut + n. 1 washer	100



BOLTS

Code	Description	Dimension	Accessories supplied	Pack Carton
FINISH: BICHRO				
MV 66 100	Bolt + nut	M6x10	Flanged nut	100
MV 66 101	Bolt + nut	M6x14	Flanged nut	100
MV 66 403	Bolt + nut	M6x20	Flanged nut	100
FINISH: DACRO				
MV 66 201	Bolt + nut	M6x14	Flanged nut	100
MV 66 200	Bolt + nut	M6x10	Flanged nut	100
MV 66 203	Bolt + nut	M6x20	Flanged nut	100

MV66100



SPRING NUT 41X29

Code	Dimension	Pack Carton
FINISH: EZ		
MV 66 151	M6	100
MV 66 152	M8	100
MV 66 153	M10	100

MV66152



MV66156



SPRING NUT 41X41

Code	Dimension	Pack Carton
FINISH: EZ		
MV 66 156	M6	100
MV 66 157	M8	100
MV 66 158	M10	100

GUIDE NUT 41

Code	Dimension	Pack Carton
FINISH: EZ		
MV 66 182	M8	100
MV 66 183	M10	100

MV66132



HEXAGON HEAD SCREW

Code	Dimension	Pack Carton
FINISH: EZ		
MV 66 132	HM6x20	100
MV 66 133	HM8x25	100
MV 66 134	HM8x40	100
MV 66 136	HM10x25	100
MV 66 138	HM10x50	100