

CABLE TRAYS WITH TRANSVERSAL RIBS

BRN 35 CABLE TRAYS

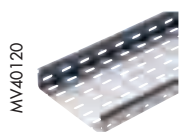


MV40100

CABLE TRAYS WITH TRANSVERSE RIBBING - LENGTH: 3 METRES

Code	Width (mm)	Pack Carton
FINISH: Z 275		
MV 40 100	65	30
MV 40 101	95	30
MV 40 102	125	30
MV 40 103	155	18
MV 40 104	185	18
MV 40 105	215	12
MV 40 106	245	12
MV 40 108	305	6
MV 40 110	365	6
MV 40 111	395	6
FINISH: GAC		
MV 40 200	65	30
MV 40 201	95	30
MV 40 202	125	30
MV 40 203	155	18
MV 40 204	185	18
MV 40 205	215	12
MV 40 206	245	12
MV 40 208	305	6
MV 40 210	365	6
MV 40 211	395	6

BRN 50 CABLE TRAYS



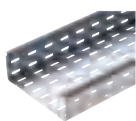
MV40120

CABLE TRAYS WITH TRANSVERSE RIBBING IN GALVANIZED STEEL - LENGTH: 3 METRES

Code	Width (mm)	Pack Carton
FINISH: Z 275		
MV 40 120	65	24
MV 40 121	95	24
MV 40 122	125	18
MV 40 123	155	12
MV 40 124	185	12
MV 40 125	215	12
MV 40 126	245	12
MV 40 128	305	6
MV 40 130	365	6
MV 40 131	395	6
MV 40 135	515	6
FINISH: GAC		
MV 40 220	65	24
MV 40 221	95	24
MV 40 222	125	18
MV 40 223	155	12
MV 40 224	185	12
MV 40 225	215	12
MV 40 226	245	12
MV 40 228	305	6
MV 40 230	365	6
MV 40 231	395	6
MV 40 235	515	6

BRN 65 CABLE TRAYS

MV40141

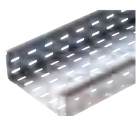


CABLE TRAYS WITH TRANSVERSE RIBBING IN GALVANIZED STEEL - LENGTH: 3 METRES

Code	Width (mm)	Pack Carton
FINISH: Z 275		
MV 40 141	95	24
MV 40 145	215	12
MV 40 148	305	6
MV 40 151	395	6
MV 40 155	515	6
MV 40 157	605	6
FINISH: GAC		
MV 40 241	95	24
MV 40 245	215	12
MV 40 248	305	6
MV 40 251	395	6
MV 40 255	515	6
MV 40 257	605	6

BRN 80 CABLE TRAYS

MV40162

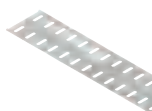


CABLE TRAYS WITH TRANSVERSE RIBBING IN GALVANIZED STEEL - LENGTH: 3 METRES

Code	Width (mm)	Pack Carton
FINISH: Z 275		
MV 40 162	125	18
MV 40 165	215	12
MV 40 168	305	6
MV 40 171	395	6
MV 40 175	515	6
MV 40 177	605	6
FINISH: GAC		
MV 40 262	125	18
MV 40 265	215	12
MV 40 268	305	6
MV 40 271	395	6
MV 40 275	515	6
MV 40 277	605	6

FINISHING ACCESSORIES

MV48151



COVER FOR BRN 35-50-65-80

Code	Type	Width (mm)	Pack Carton
FINISH: Z 275			
MV 48 151	BRN 35-50-65-80	395	100
MV 48 155	BRN 65-80	515	100
MV 48 157	BRN 65-80	605	100
FINISH: GAC			
MV 48 251	BRN 35-50-65-80	395	100
MV 48 255	BRN 65-80	515	100
MV 48 257	BRN 65-80	605	100

MV40180



COVER FOR BRN 35-50-65-80 - STANDARD LENGTH: 2 METRES

Code	Width (mm)	Pack Carton
FINISH: Z 275		
MV 40 180	65	20
MV 40 181	95	20
MV 40 182	125	20
MV 40 183	155	20
MV 40 184	185	20
MV 40 185	215	20
MV 40 186	245	16
MV 40 188	305	12
MV 40 190	365	8
MV 40 191	395	8
MV 40 195	515	8
MV 40 197	605	8
FINISH: GAC		
MV 40 280	65	20
MV 40 281	95	20
MV 40 282	125	20
MV 40 283	155	20
MV 40 284	185	20
MV 40 285	215	20
MV 40 286	245	16
MV 40 288	305	12
MV 40 290	365	8
MV 40 291	395	8
MV 40 295	515	8
MV 40 297	605	8

MV41602



STAINLESS STEEL CLIP FOR BRN COVERS FOR VERTICAL OR EDGE MOUNTING

Code	Description	For BRN trays	Pack Carton
FINISH: STAINLESS STEEL			
MV 41 601	Clip for cover	35	10/1000
MV 41 602	Clip for cover	50-80	10/1000
MV 41 603	Clip for cover	65	10/1000

MV65110



DIVIDER FOR BRN CABLE TRAYS - LENGTH: 3 METRES

Code	Description	For BRN trays	Pack Carton
FINISH: Z 275			
MV 65 110	Separator	35	30
MV 65 111	Separator	50	30
MV 65 112	Separator	65	30
MV 65 113	Separator	80	30
FINISH: GAC			
MV 65 210	Separator	35	30
MV 65 211	Separator	50	30
MV 65 212	Separator plate		10
MV 65 213	Separator	80	30

NOTE: the separator can be used starting from the width 155 (BRN 35+ 50 Range with M 6x14 bolts). Ask for BRN 65 and BRN 80 Range specifications.

GALVANIZED STEEL CABLE TRAY/BASKET

FINISHING ACCESSORIES

COVER FOR B 30 / BR 30- STANDARD LENGTH: 2 METRES

Code	Width (mm)	Finish	Pack Carton
MV 65 103	35	Z 275	20
MV 65 104	65	Z 275	40
MV 65 203	35	GAC	20
MV 65 204	65	GAC	40

INSTALLATION ACCESSORIES

JOINTING PIECES

MV41111



SPEED-LOCK COUPLER (BOLTLESS)

Code	Type	Pack Carton
FINISH: Z 275		
MV 41 110	BRN 35	100
MV 41 111	BRN 50	80
FINISH: GAC		
MV 41 212	BRN 35	100
MV 41 213	BRN 50	80

MV41120



HINGED/STRAIGHT JOINTING PIECE

Code	Description	Type	Pack Carton
FINISH: Z 275			
MV 41 120	Rigid/Hinged coupler	BRN 35-50	100
MV 41 140	Hinged coupler	BRN 65-80 length 275	100
MV 41 121	Vertical hinged coupler	BRN 65-80	100
FINISH: GAC			
MV 41 222	Rigid/Hinged coupler	BRN 35-50	100
MV 41 240	Hinged coupler	BRN 65-80 length 275	100
MV 41 223	Vertical hinged coupler	BRN 65-80	100

MV41130



PLIABLE JOINTING PIECE FOR HORIZONTAL JUNCTIONS

Code	Type	Pack Carton
FINISH: Z 275		
MV 41 130	BRN 35-50	200
MV 41 131	BRN 65-80	100

MV66100



BOLTS

Code	Description	Dimension	Accessories supplied	Pack Carton
FINISH: BICHRO				
MV 66 100	Bolt + nut	M6x10	Flanged nut	100
MV 66 101	Bolt + nut	M6x14	Flanged nut	100
MV 66 403	Bolt + nut	M6x20	Flanged nut	100
FINISH: DACRO				
MV 66 201	Bolt + nut	M6x14	Flanged nut	100
MV 66 200	Bolt + nut	M6x10	Flanged nut	100
MV 66 203	Bolt + nut	M6x20	Flanged nut	100

ROUTING COMPONENTS

90° HORIZONTAL BENDS

MV42100



BRN 35 90° BEND

Code	Width (mm)	Pack Carton
FINISH: Z 275		
MV 42 100	65	2
MV 42 101	95	2
MV 42 102	125	2
MV 42 103	155	2
MV 42 104	185	2
MV 42 105	215	2
MV 42 106	245	2
MV 42 108	305	2
MV 42 110	365	2
MV 42 111	395	2
FINISH: GAC		
MV 42 200	65	2
MV 42 201	95	2
MV 42 202	125	2
MV 42 203	155	2
MV 42 204	185	2
MV 42 205	215	2
MV 42 206	245	2
MV 42 208	305	2
MV 42 210	365	2
MV 42 211	395	2

MV42120



BRN 50 90° BEND

Code	Width (mm)	Pack Carton
FINISH: Z 275		
MV 42 120	65	2
MV 42 121	95	2
MV 42 122	125	2
MV 42 123	155	2
MV 42 124	185	2
MV 42 125	215	2
MV 42 126	245	2
MV 42 128	305	2
MV 42 130	365	2
MV 42 131	395	2
MV 42 135	515	2
FINISH: GAC		
MV 42 220	65	2
MV 42 221	95	2
MV 42 222	125	2
MV 42 223	155	2
MV 42 224	185	2
MV 42 225	215	2
MV 42 226	245	2
MV 42 228	305	2
MV 42 230	365	2
MV 42 231	395	2
MV 42 235	515	2

MV42141



BRN 65 90° BEND

Code	Width (mm)	Pack Carton
FINISH: Z 275		
MV 42 141	95	2
MV 42 145	215	2
MV 42 148	305	2
MV 42 151	395	2
MV 42 155	515	2
MV 42 157	605	2

TO BE CONTINUED ON NEXT PAGE

(TO BE CONTINUED)

BRN 65 90° BEND

Code	Width (mm)	Pack Carton
FINISH: GAC		
MV 42 241	95	2
MV 42 245	215	2
MV 42 248	305	2
MV 42 251	395	2
MV 42 255	515	2
MV 42 257	605	2

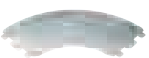
MV42162



BRN 80 90° BEND

Code	Width (mm)	Pack Carton
FINISH: Z 275		
MV 42 162	125	2
MV 42 165	215	2
MV 42 168	305	2
MV 42 171	395	2
MV 42 175	515	2
MV 42 177	605	2
FINISH: GAC		
MV 42 262	125	2
MV 42 265	215	2
MV 42 268	305	2
MV 42 271	395	2
MV 42 275	515	2
MV 42 277	605	2

MV42180



COVER FOR BRN 90° BEND

Code	Width (mm)	Pack Carton
FINISH: Z 275		
MV 42 180	65	2
MV 42 181	95	2
MV 42 182	125	2
MV 42 183	155	2
MV 42 184	185	2
MV 42 185	215	2
MV 42 186	245	2
MV 42 188	305	2
MV 42 190	365	2
MV 42 191	395	2
MV 42 195	515	2
MV 42 197	605	2
FINISH: GAC		
MV 42 280	65	2
MV 42 281	95	2
MV 42 282	125	2
MV 42 283	155	2
MV 42 284	185	2
MV 42 285	215	2
MV 42 286	245	2
MV 42 288	305	2
MV 42 290	365	2
MV 42 291	395	2
MV 42 295	515	2
MV 42 297	605	2

45° HORIZONTAL BENDS

MV43100



BRN 35 45° BEND

Code	Width (mm)	Pack Carton
FINISH: Z 275		
MV 43 100	65	2
MV 43 101	95	2
MV 43 102	125	2
MV 43 103	155	2
MV 43 104	185	2
MV 43 105	215	2
MV 43 106	245	2
MV 43 108	305	2
MV 43 110	365	2
MV 43 111	395	2
FINISH: GAC		
MV 43 200	65	2
MV 43 201	95	2
MV 43 202	125	2
MV 43 203	155	2
MV 43 204	185	2
MV 43 205	215	2
MV 43 206	245	2
MV 43 208	305	2
MV 43 210	365	2
MV 43 211	395	2

MV43120



BRN 50 45° BEND

Code	Width (mm)	Pack Carton
FINISH: Z 275		
MV 43 120	65	2
MV 43 121	95	2
MV 43 122	125	2
MV 43 123	155	2
MV 43 124	185	2
MV 43 125	215	2
MV 43 126	245	2
MV 43 128	305	2
MV 43 130	365	2
MV 43 131	395	2
MV 43 135	515	2
FINISH: GAC		
MV 43 220	65	2
MV 43 221	65	2
MV 43 222	125	2
MV 43 223	155	2
MV 43 224	185	2
MV 43 225	215	2
MV 43 226	245	2
MV 43 228	305	2
MV 43 230	365	2
MV 43 231	395	2
MV 43 235	515	2

MV43141



BRN 65 45° BEND

Code	Width (mm)	Pack Carton
FINISH: Z 275		
MV 43 141	95	2
MV 43 145	215	2
MV 43 148	305	2
MV 43 151	395	2
MV 43 155	515	2
MV 43 157	605	2

TO BE CONTINUED ON NEXT PAGE

(TO BE CONTINUED)

BRN 65 45° BEND

Code	Width (mm)	Pack Carton
FINISH: GAC		
MV 43 241	95	2
MV 43 245	215	2
MV 43 248	305	2
MV 43 251	395	2
MV 43 255	515	2
MV 43 257	605	2

MV43162



BRN 80 45° BEND

Code	Width (mm)	Pack Carton
FINISH: Z 275		
MV 43 162	125	2
MV 43 165	215	2
MV 43 168	305	2
MV 43 171	395	2
MV 43 175	515	2
MV 43 177	605	2
FINISH: GAC		
MV 43 262	125	2
MV 43 265	215	2
MV 43 268	305	2
MV 43 271	395	2
MV 43 275	515	2
MV 43 277	605	2

MV43180



COVER FOR BRN 45° BEND

Code	Width (mm)	Pack Carton
FINISH: Z 275		
MV 43 180	65	2
MV 43 181	95	2
MV 43 182	125	2
MV 43 183	155	2
MV 43 184	185	2
MV 43 185	215	2
MV 43 186	245	2
MV 43 188	305	2
MV 43 190	365	2
MV 43 191	395	2
MV 43 195	515	2
MV 43 197	605	2
FINISH: GAC		
MV 43 280	65	2
MV 43 281	95	2
MV 43 282	125	2
MV 43 283	155	2
MV 43 284	185	2
MV 43 285	215	2
MV 43 286	245	2
MV 43 288	305	2
MV 43 290	365	2
MV 43 291	395	2
MV 43 295	515	2
MV 43 297	605	2

HORIZONTAL T JUNCTION

MV46105



BRN 35 T JUNCTION

Code	Width (mm)	Pack Carton
FINISH: Z 275		
MV 46 100	65	2
MV 46 101	95	2
MV 46 102	125	2
MV 46 103	155	2
MV 46 104	185	2
MV 46 105	215	2
MV 46 106	245	2
MV 46 108	305	2
MV 46 110	365	1/2
MV 46 111	395	2
FINISH: GAC		
MV 46 200	65	2
MV 46 201	95	2
MV 46 202	125	2
MV 46 203	155	2
MV 46 204	185	2
MV 46 205	215	2
MV 46 206	245	2
MV 46 208	305	2
MV 46 210	365	2
MV 46 211	395	2

MV46120



BRN 50 T JUNCTION

Code	Width (mm)	Pack Carton
FINISH: Z 275		
MV 46 120	65	2
MV 46 121	95	2
MV 46 122	125	2
MV 46 123	155	2
MV 46 124	185	2
MV 46 125	215	2
MV 46 126	245	2
MV 46 128	305	2
MV 46 130	365	2
MV 46 131	395	2
MV 46 135	515	2
FINISH: GAC		
MV 46 220	65	2
MV 46 221	95	2
MV 46 222	125	2
MV 46 223	155	2
MV 46 224	185	2
MV 46 225	215	2
MV 46 226	245	2
MV 46 228	305	2
MV 46 230	365	2
MV 46 231	395	2
MV 46 235	515	2

MV46141



BRN 65 T JUNCTION

Code	Width (mm)	Pack Carton
FINISH: Z 275		
MV 46 141	95	2
MV 46 145	215	2
MV 46 148	305	2
MV 46 151	395	2
MV 46 155	515	2
MV 46 157	605	2

TO BE CONTINUED ON NEXT PAGE

(TO BE CONTINUED)

BRN 65 T JUNCTION

Code	Width (mm)	Pack Carton
FINISH: GAC		
MV 46 241	95	2
MV 46 245	215	2
MV 46 248	305	2
MV 46 251	395	2
MV 46 255	515	2
MV 46 257	605	2

MV46162



BRN 80 T JUNCTION

Code	Width (mm)	Pack Carton
FINISH: Z 275		
MV 46 162	125	2
MV 46 165	215	2
MV 46 168	305	2
MV 46 171	395	2
MV 46 175	515	2
MV 46 177	605	2
FINISH: GAC		
MV 46 262	125	2
MV 46 265	215	2
MV 46 268	305	2
MV 46 271	395	2
MV 46 275	515	2
MV 46 277	605	2

MV46180



COVER FOR BRN T JUNCTION

Code	Width (mm)	Pack Carton
FINISH: Z 275		
MV 46 180	65	2
MV 46 181	95	2
MV 46 182	125	2
MV 46 183	155	2
MV 46 184	185	2
MV 46 185	215	2
MV 46 186	245	2
MV 46 188	305	2
MV 46 190	365	2
MV 46 191	395	2
MV 46 195	515	2
MV 46 197	605	2
FINISH: GAC		
MV 46 280	65	2
MV 46 281	95	2
MV 46 282	125	2
MV 46 283	155	2
MV 46 284	185	2
MV 46 285	215	2
MV 46 286	245	2
MV 46 288	305	2
MV 46 290	365	2
MV 46 291	395	2
MV 46 295	515	2
MV 46 297	605	2

HORIZONTAL CROSS JUNCTIONS



MV47100

BRN 35 CROSS

Code	Width (mm)	Pack Carton
FINISH: Z 275		
MV 47 100	65	2
MV 47 101	95	2
MV 47 102	125	2
MV 47 103	155	2
MV 47 104	185	2
MV 47 105	215	2
MV 47 106	245	2
MV 47 108	305	2
MV 47 110	365	2
MV 47 111	395	2
FINISH: GAC		
MV 47 200	65	2
MV 47 201	95	2
MV 47 202	125	2
MV 47 203	155	2
MV 47 204	185	2
MV 47 205	215	2
MV 47 206	245	2
MV 47 208	305	2
MV 47 210	365	2
MV 47 211	395	2



MV47120

BRN 50 CROSS

Code	Width (mm)	Pack Carton
FINISH: Z 275		
MV 47 120	65	2
MV 47 121	95	2
MV 47 122	125	2
MV 47 123	155	2
MV 47 124	185	2
MV 47 125	215	2
MV 47 126	245	2
MV 47 128	305	2
MV 47 130	365	2
MV 47 131	395	2
MV 47 135	515	2
FINISH: GAC		
MV 47 220	65	2
MV 47 221	95	2
MV 47 222	125	2
MV 47 223	155	2
MV 47 224	185	2
MV 47 225	215	2
MV 47 226	245	2
MV 47 228	305	2
MV 47 230	365	2
MV 47 231	395	2
MV 47 235	515	2



MV47141

BRN 65 CROSS

Code	Width (mm)	Pack Carton
FINISH: Z 275		
MV 47 141	95	2
MV 47 145	215	2
MV 47 148	305	2
MV 47 151	395	2
MV 47 155	515	2
MV 47 157	605	2

TO BE CONTINUED ON NEXT PAGE

(TO BE CONTINUED)

BRN 65 CROSS

Code	Width (mm)	Pack Carton
FINISH: GAC		
MV 47 241	95	2
MV 47 245	215	2
MV 47 248	305	2
MV 47 251	395	2
MV 47 255	515	2
MV 47 257	605	2

MV47162



BRN 80 CROSS

Code	Width (mm)	Pack Carton
FINISH: Z 275		
MV 47 162	125	2
MV 47 165	215	2
MV 47 168	305	2
MV 47 171	395	2
MV 47 175	515	2
MV 47 177	605	2
FINISH: GAC		
MV 47 262	125	2
MV 47 265	215	2
MV 47 268	305	2
MV 47 271	395	2
MV 47 275	515	2
MV 47 277	605	2

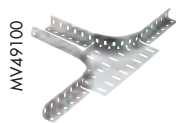
MV47180



COVER FOR BRN CROSS

Code	Width (mm)	Pack Carton
FINISH: Z 275		
MV 47 180	65	2
MV 47 181	95	2
MV 47 182	125	2
MV 47 183	155	2
MV 47 184	185	2
MV 47 185	215	2
MV 47 186	245	2
MV 47 188	305	2
MV 47 190	365	2
MV 47 191	395	2
MV 47 195	515	2
MV 47 197	605	2
FINISH: GAC		
MV 47 280	65	2
MV 47 281	95	2
MV 47 282	125	2
MV 47 283	155	2
MV 47 284	185	2
MV 47 285	215	2
MV 47 286	245	2
MV 47 288	305	2
MV 47 290	365	2
MV 47 291	395	2
MV 47 295	515	2
MV 47 297	605	2

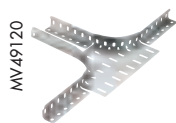
TEE BRANCHES



MV49100

BRN 35 TEE BRANCH

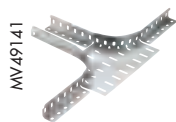
Code	Width (mm)	Pack Carton
FINISH: Z 275		
MV 49 100	65	2
MV 49 101	95	2
MV 49 102	125	2
MV 49 103	155	2
MV 49 104	185	2
MV 49 105	215	2
MV 49 106	245	2
MV 49 108	305	2
MV 49 110	365	2
MV 49 111	395	2
FINISH: GAC		
MV 49 200	65	2
MV 49 201	95	2
MV 49 202	125	2
MV 49 203	155	2
MV 49 204	185	2
MV 49 205	215	2
MV 49 206	245	2
MV 49 208	305	2
MV 49 210	365	2
MV 49 211	395	2



MV49120

BRN 50 TEE BRANCH

Code	Width (mm)	Pack Carton
FINISH: Z 275		
MV 49 120	65	2
MV 49 121	95	2
MV 49 122	125	2
MV 49 123	155	2
MV 49 124	185	2
MV 49 125	215	2
MV 49 126	245	2
MV 49 128	305	2
MV 49 130	365	2
MV 49 131	395	2
MV 49 135	515	2
FINISH: GAC		
MV 49 220	65	2
MV 49 221	95	2
MV 49 222	125	2
MV 49 223	155	2
MV 49 224	185	2
MV 49 225	215	2
MV 49 226	245	2
MV 49 228	305	2
MV 49 230	365	2
MV 49 231	395	2
MV 49 235	515	2



MV49141

BRN 65 TEE BRANCH

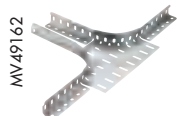
Code	Width (mm)	Pack Carton
FINISH: Z 275		
MV 49 141	95	2
MV 49 145	215	2
MV 49 148	305	2
MV 49 151	395	2
MV 49 155	515	2
MV 49 157	605	2

TO BE CONTINUED ON NEXT PAGE

(TO BE CONTINUED)

BRN 65 TEE BRANCH

Code	Width (mm)	Pack Carton
FINISH: GAC		
MV 49 241	95	2
MV 49 245	215	2
MV 49 248	305	2
MV 49 251	395	2
MV 49 255	515	2
MV 49 257	605	2



MV49162

BRN 80 TEE BRANCH

Code	Width (mm)	Pack Carton
FINISH: Z 275		
MV 49 162	125	2
MV 49 165	215	2
MV 49 168	305	2
MV 49 171	395	2
MV 49 175	515	2
MV 49 177	605	2
FINISH: GAC		
MV 49 262	125	2
MV 49 265	215	2
MV 49 268	305	2
MV 49 271	395	2
MV 49 275	515	2
MV 49 277	605	2



MV49180

COVER FOR BRN TEE BRANCHES

Code	Width (mm)	Pack Carton
FINISH: Z 275		
MV 49 180	65	2
MV 49 181	95	2
MV 49 182	125	2
MV 49 183	155	2
MV 49 184	185	2
MV 49 185	215	2
MV 49 186	245	2
MV 49 188	305	2
MV 49 190	365	2
MV 49 191	395	2
MV 49 195	515	2
MV 49 197	605	2
FINISH: GAC		
MV 49 280	65	2
MV 49 281	95	2
MV 49 282	125	2
MV 49 283	155	2
MV 49 284	185	2
MV 49 285	215	2
MV 49 286	245	2
MV 49 288	305	2
MV 49 290	365	2
MV 49 291	395	2
MV 49 295	515	2
MV 49 297	605	2

UPWARD BEND



MV44100

BRN 35 UPWARD BEND

Code	Width (mm)	Pack Carton
FINISH: Z 275		
MV 44 100	65	2
MV 44 101	95	2
MV 44 102	125	2
MV 44 103	155	2
MV 44 104	185	2
MV 44 105	215	2
MV 44 106	245	2
MV 44 108	305	2
MV 44 110	365	2
MV 44 111	395	2
FINISH: GAC		
MV 44 200	65	2
MV 44 201	95	2
MV 44 202	125	2
MV 44 203	155	2
MV 44 204	185	2
MV 44 205	215	2
MV 44 206	245	2
MV 44 208	305	2
MV 44 210	365	2
MV 44 211	395	2



MV44120

BRN 50 UPWARD BEND

Code	Width (mm)	Pack Carton
FINISH: Z 275		
MV 44 120	65	2
MV 44 121	95	2
MV 44 122	125	2
MV 44 123	155	2
MV 44 124	185	2
MV 44 125	215	2
MV 44 126	245	2
MV 44 128	305	2
MV 44 130	365	2
MV 44 131	395	2
MV 44 135	515	2
FINISH: GAC		
MV 44 220	65	2
MV 44 221	95	2
MV 44 222	125	2
MV 44 223	155	2
MV 44 224	185	2
MV 44 225	215	2
MV 44 226	245	2
MV 44 228	305	2
MV 44 230	365	2
MV 44 231	395	2
MV 44 235	515	2



MV44141

BRN 65 UPWARD BEND

Code	Width (mm)	Pack Carton
FINISH: Z 275		
MV 44 141	95	2
MV 44 145	215	2
MV 44 148	305	2
MV 44 151	395	2
MV 44 155	515	2
MV 44 157	605	2

TO BE CONTINUED ON NEXT PAGE

(TO BE CONTINUED)

BRN 65 UPWARD BEND

Code	Width (mm)	Pack Carton
FINISH: GAC		
MV 44 241	95	2
MV 44 245	215	2
MV 44 248	305	2
MV 44 251	395	2
MV 44 255	515	2
MV 44 257	605	2

MV44162



BRN 80 UPWARD BEND

Code	Width (mm)	Pack Carton
FINISH: Z 275		
MV 44 162	125	2
MV 44 165	215	2
MV 44 168	305	2
MV 44 171	395	2
MV 44 175	515	2
MV 44 177	605	2
FINISH: GAC		
MV 44 262	125	2
MV 44 265	215	2
MV 44 268	305	2
MV 44 271	395	2
MV 44 275	515	2
MV 44 277	605	2

MV44180



COVER FOR BRN UPWARD BEND

Code	Width (mm)	Pack Carton
FINISH: Z 275		
MV 44 180	65	2
MV 44 181	95	2
MV 44 182	125	2
MV 44 183	155	2
MV 44 184	185	2
MV 44 185	215	2
MV 44 186	245	2
MV 44 188	305	2
MV 44 190	365	2
MV 44 191	395	2
MV 44 195	515	2
MV 44 197	605	2
FINISH: GAC		
MV 44 280	65	2
MV 44 281	95	2
MV 44 282	125	2
MV 44 283	155	2
MV 44 284	185	2
MV 44 285	215	2
MV 44 286	245	2
MV 44 288	305	2
MV 44 290	365	2
MV 44 291	395	2
MV 44 295	515	2
MV 44 297	605	2

DOWNWARD BEND



MV45100

BRN 35 DOWNWARD BEND

Code	Width (mm)	Pack Carton
FINISH: Z 275		
MV 45 100	65	2
MV 45 101	95	2
MV 45 102	125	2
MV 45 103	155	2
MV 45 104	185	2
MV 45 105	215	2
MV 45 106	245	2
MV 45 108	305	2
MV 45 110	365	2
MV 45 111	395	2
FINISH: GAC		
MV 45 200	65	2
MV 45 201	95	2
MV 45 202	125	2
MV 45 203	155	2
MV 45 204	185	2
MV 45 205	215	2
MV 45 206	245	2
MV 45 208	305	2
MV 45 210	365	2
MV 45 211	395	2



MV45120

BRN 50 DOWNWARD BEND

Code	Width (mm)	Pack Carton
FINISH: Z 275		
MV 45 120	65	2
MV 45 121	95	2
MV 45 122	125	2
MV 45 123	155	2
MV 45 124	185	2
MV 45 125	215	2
MV 45 126	245	2
MV 45 128	305	2
MV 45 130	365	2
MV 45 131	395	2
MV 45 135	515	2
FINISH: GAC		
MV 45 220	65	2
MV 45 221	95	2
MV 45 222	125	2
MV 45 223	155	2
MV 45 224	185	2
MV 45 225	215	2
MV 45 226	245	2
MV 45 228	305	2
MV 45 230	365	2
MV 45 231	395	2
MV 45 235	515	2



MV45141

BRN 65 DOWNWARD BEND

Code	Width (mm)	Pack Carton
FINISH: Z 275		
MV 45 141	95	2
MV 45 145	215	2
MV 45 148	305	2
MV 45 151	395	2
MV 45 155	515	2
MV 45 157	605	2

TO BE CONTINUED ON NEXT PAGE

(TO BE CONTINUED)

BRN 65 DOWNWARD BEND

Code	Width (mm)	Pack Carton
FINISH: GAC		
MV 45 241	95	2
MV 45 245	215	2
MV 45 248	305	2
MV 45 251	395	2
MV 45 255	515	2
MV 45 257	605	2

MV45162



BRN 80 DOWNWARD BEND

Code	Width (mm)	Pack Carton
FINISH: Z 275		
MV 45 162	125	2
MV 45 165	215	2
MV 45 168	305	2
MV 45 171	395	2
MV 45 175	515	2
MV 45 177	605	2
FINISH: GAC		
MV 45 262	125	2
MV 45 265	215	2
MV 45 268	305	2
MV 45 271	395	2
MV 45 275	515	2
MV 45 277	605	2

MV45180



COVER FOR BRN DOWNWARD BEND

Code	Width (mm)	Pack Carton
FINISH: Z 275		
MV 45 180	65	2
MV 45 181	95	2
MV 45 182	125	2
MV 45 183	155	2
MV 45 184	185	2
MV 45 185	215	2
MV 45 186	245	2
MV 45 188	305	2
MV 45 190	365	2
MV 45 191	395	2
MV 45 195	515	2
MV 45 197	605	2
FINISH: GAC		
MV 45 280	65	2
MV 45 281	95	2
MV 45 282	125	2
MV 45 283	155	2
MV 45 284	185	2
MV 45 285	215	2
MV 45 286	245	2
MV 45 288	305	2
MV 45 290	365	2
MV 45 291	395	2
MV 45 295	515	2
MV 45 297	605	2

HORIZONTAL ELBOWAS KIT (90° AND 45°)

MV48100



FOLDING ANGLE FOR HORIZONTAL BEND BRN 35

Code	Description	Length (mm)	Pack Carton
FINISH: Z 275			
MV 48 100	Int. folding perforated angle	409	10
MV 48 101	Ext. folding perforated angle	1077	10

MV48102



FOLDING ANGLE FOR HORIZONTAL BEND BRN 50

Code	Description	Length (mm)	Pack Carton
FINISH: Z 275			
MV 48 102	Int. folding perforated angle	409	10
MV 48 103	Ext. folding perforated angle	1359	10

MV48104



FOLDING ANGLE FOR HORIZONTAL BEND BRN 65

Code	Description	Length (mm)	Pack Carton
FINISH: Z 275			
MV 48 104	Int. folding perforated angle	409	10
MV 48 105	Ext. folding perforated angle	1359	10

MV48107



FOLDING ANGLE FOR HORIZONTAL BEND BRN 80

Code	Description	Length (mm)	Pack Carton
FINISH: Z 275			
MV 48 107	Int. folding perforated angle	409	10
MV 48 108	Ext. folding perforated angle	1359	10

MV48131



BRN 30-50 PRE-CUT 45° BOTTOM FOR KIT ELBOWS

Code	Width (mm)	Pack Carton
FINISH: Z 275		
MV 48 131	65 - 95 - 125	10
MV 48 132	155 - 185 - 215	10
MV 48 133	245 - 275 - 305	10
MV 48 134	455 - 485 - 515	10
MV 48 135		10

Have: 2 pre-cut 45° boards for a 90° bend.

MV66100



BOLTS FOR KIT MULTICURVES

Code	Description	Dimension	Accessories supplied	Finish	Pack Carton
MV 66 100	Bolt + nut	M6x10	Flanged nut	Bichro	100

Have: 3 bolts for 135° bends - 6 bolts for 90° bends.

KIT OF VERTICAL BENDS

MV48110



BRN 35 FOLDING ANGLE FOR INTERNAL/EXTERNAL VERTICAL BENDS

Code	Description	Dimension	Accessories supplied	Finish	Pack Carton
MV 48 110	Folding perforated angle	513		Z 275	10
MV 48 130	Perforated bottom to cut	300x660		Z 275	10
MV 66 100	Bolt + nut	M6x10	Flanged nut	Bichro	100

MV48111



BRN 50 FOLDING ANGLE FOR INTERNAL/EXTERNAL VERTICAL BENDS

Code	Description	Dimension	Accessories supplied	Finish	Pack Carton
MV 48 111	Folding perforated angle	513		Z 275	10
MV 48 130	Perforated bottom to cut	300x660		Z 275	10
MV 66 100	Bolt + nut	M6x10	Flanged nut	Bichro	100

BRN RANGE

NEW

TECHNICAL CHARACTERISTICS FROM PAGE 1050

MV48112



BRN 65 FOLDING ANGLE FOR INTERNAL/EXTERNAL VERTICAL BENDS

Code	Description	Dimension	Accessories supplied	Finish	Pack Carton
MV 48 112	Folding perforated angle	513		Z 275	10
MV 48 130	Perforated bottom to cut	300x660		Z 275	10
MV 66 100	Bolt + nut	M6x10	Flanged nut	Bichro	100

MV48113



BRN 80 FOLDING ANGLE FOR INTERNAL/EXTERNAL VERTICAL BENDS

Code	Description	Dimension	Accessories supplied	Finish	Pack Carton
MV 48 113	Folding perforated angle	513		Z 275	10
MV 48 130	Perforated bottom to cut	300x660		Z 275	10
MV 66 100	Bolt + nut	M6x10	Flanged nut	Bichro	100