

GALVANIZED WIRE MESH CABLE TRAYS/BASKET

BFR 30 CABLE TRAY



MV50520

GALVANIZED WIRE MESH CABLE TRAY - LENGTH: 3 METRES

Code	Width (mm)	Pack Carton
FINISH: Z 100		
MV 50 520	50	30
MV 50 521	100	30
MV 50 522	150	18
MV 50 523	200	12
MV 50 525	300	6
FINISH: EZ		
MV 50 420	50	30
MV 50 421	100	30
MV 50 422	150	18
MV 50 423	200	12
MV 50 425	300	6
FINISH: GAC		
MV 50 220	50	30
MV 50 221	100	30
MV 50 222	150	18
MV 50 223	200	12
MV 50 225	300	6
FINISH: STAINLESS STEEL		
MV 50 620	50	30
MV 50 621	100	30
MV 50 622	150	18
MV 50 623	200	12
MV 50 625	300	6

MV50420 - MV50220: Width. 50 = 1 chain row.

BFR 60 CABLE TRAY



MV50530

GALVANIZED WIRE MESH CABLE TRAY - LENGTH: 3 METRES

Code	Width (mm)	Pack Carton
FINISH: Z 100		
MV 50 530	50	24
MV 50 531	100	24
MV 50 532	150	12
MV 50 533	200	12
MV 50 534	250	6
MV 50 535	300	6
MV 50 536	400	6
MV 50 537	500	6
MV 50 538	600	6
FINISH: EZ		
MV 50 430	50	24
MV 50 431	100	24
MV 50 432	150	12
MV 50 433	200	12
MV 50 434	250	6
MV 50 435	300	6
MV 50 436	400	6
MV 50 437	500	6
MV 50 438	600	6
FINISH: GAC		
MV 50 230	50	24
MV 50 231	100	24
MV 50 232	150	12
MV 50 233	200	12
MV 50 234	250	6
MV 50 235	300	6
MV 50 236	400	6
MV 50 237	500	6
MV 50 238	600	6

TO BE CONTINUED ON NEXT PAGE

BFR RANGE

GALVANIZED STEEL CABLE TRAYS



(TO BE CONTINUED)

GALVANIZED WIRE MESH CABLE TRAY - LENGTH: 3 METRES

Code	Width (mm)	Pack Carton
FINISH: STAINLESS STEEL		
MV 50 630	50	24
MV 50 631	100	24
MV 50 632	150	12
MV 50 633	200	12
MV 50 635	300	6
MV 50 636	400	6
MV 50 637	500	6
MV 50 638	600	6

MV50530 - MV50430 - MV50230: Width. 50 = 1 chain row.

BFR 110 CABLE TRAY

MV50543



GALVANIZED WIRE MESH CABLE TRAY - LENGTH: 3 METRES

Code	Width (mm)	Pack Carton
FINISH: Z 100		
MV 50 542	150	12
MV 50 543	200	6
MV 50 545	300	6
MV 50 546	400	6
MV 50 547	500	6
MV 50 548	600	6
FINISH: EZ		
MV 50 442	150	12
MV 50 443	200	6
MV 50 445	300	6
MV 50 446	400	6
MV 50 447	500	6
MV 50 448	600	6
FINISH: GAC		
MV 50 242	150	12
MV 50 243	200	6
MV 50 245	300	6
MV 50 246	400	6
MV 50 247	500	6
MV 50 248	600	6
FINISH: STAINLESS STEEL		
MV 50 642	150	12
MV 50 643	200	6
MV 50 645	300	6
MV 50 646	400	6
MV 50 647	500	6
MV 50 648	600	6

FINISHING ACCESSORIES

MV50156



BFR COVER - LENGTH: 3 METRES

Code	Width (mm)	Pack Carton
FINISH: Z 275		
MV 50 150	50	30
MV 50 151	100	30
MV 50 152	150	30
MV 50 153	200	30
MV 50 154	250	30
MV 50 155	300	18
MV 50 156	400	12
MV 50 157	500	12
MV 50 158	600	12

TO BE CONTINUED ON NEXT PAGE

(TO BE CONTINUED)

BFR COVER - LENGTH: 3 METRES

Code	Width (mm)	Pack Carton
FINISH: GAC		
MV 50 250	50	30
MV 50 251	100	30
MV 50 252	150	30
MV 50 253	200	30
MV 50 254	250	30
MV 50 255	300	18
MV 50 256	400	12
MV 50 257	500	12
MV 50 258	600	12
FINISH: STAINLESS STEEL		
MV 50 650	50	30
MV 50 651	100	30
MV 50 652	150	30
MV 50 653	200	30
MV 50 655	300	18
MV 50 656	400	12
MV 50 657	500	12
MV 50 658	600	12

STRAIGHT SEPARATOR BFR 30-60-110 - LENGTH: 3 METRES

MV65110

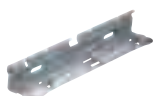


Code	Description	For BFR trays	Pack Carton
FINISH: Z 275			
MV 65 110	Separator	30	30
MV 65 111	Separator	60	30
MV 65 113	Separator	110	30
FINISH: GAC			
MV 65 210	Separator	30	30
MV 65 211	Separator	60	30
MV 65 213	Separator	110	30
FINISH: STAINLESS STEEL			
MV 65 610	Separator	30	30
MV 65 611	Separator	60	30
MV 65 613	Separator	110	30

INSTALLATION ACCESSORIES

JOINTING PIECES

MV51110



BFR 30-60 SPEED-LOCK COUPLER

Code	Description	Finish	Pack Carton
MV 51 110	Speed-lock coupler	Z 275	50
MV 51 210	Speed-lock coupler	GAC	50

BFR 60-110 STRAIGHT COUPLER WITH BOLTS



Code	Description	Characteristics	Accessories supplied	Pack Carton
FINISH: Z 275				
MV 51 123	Rigid coupler			100
MV 51 422	Counter clamping washer	With Bichro finish	Bolts and nut	100
FINISH: GAC				
MV 51 223	Rigid coupler			100
MV 51 222	Counter clamping washer	With Dacro finish	Bolts and nut	100
FINISH: STAINLESS STEEL				
MV 51 623	Rigid coupler			100
MV 51 622	Counter clamping washer		Bolt and nut	100

BFR RANGE



UNIVERSAL COUPLER

Code	Description	Dimension	Accessories supplied	Pack Carton
FINISH: BICHRO				
MV 51 420	Clamping washer			100
MV 51 421	Counter clamping washer			100
MV 66 403	Bolt + nut	M6x20	Flanged nut	100
FINISH: DACRO				
MV 51 220	Clamping washer			100
MV 51 221	Counter clamping washer			100
MV 66 203	Bolt + nut	M6x20	Flanged nut	100
FINISH: STAINLESS STEEL				
MV 51 620	Clamping washer			100
MV 51 621	Counter clamping washer			100
MV 66 620	TRCC bolt+nut	M6x20	Nut	100

NOTE: a complete joint is composed of 1 washer, 1 counter clamping washer and 1 bolt.

ROUTING COMPONENTS

90° HORIZONTAL ELBOWS

MV52420



BFR 30 90° BEND

Code	Width (mm)	Pack Carton
FINISH: Z100		
MV 52 520	50	1
MV 52 521	100	1
MV 52 522	150	1
MV 52 523	200	1
MV 52 525	300	1
FINISH: EZ		
MV 52 420	50	1
MV 52 421	100	1
MV 52 422	150	1
MV 52 423	200	1
MV 52 425	300	1
FINISH: GAC		
MV 52 220	50	1
MV 52 221	100	1
MV 52 222	150	1
MV 52 223	200	1
MV 52 225	300	1
FINISH: STAINLESS STEEL		
MV 52 620	50	1
MV 52 621	100	1
MV 52 622	150	1
MV 52 623	200	1
MV 52 625	300	1

NOTE: articles available on direct order or through our distributor.

MV52530



BFR 60 90° BEND

Code	Width (mm)	Pack Carton
FINISH: Z100		
MV 52 530	50	1
MV 52 531	100	1
MV 52 532	150	1
MV 52 533	200	1
MV 52 534	250	1
MV 52 535	300	1
MV 52 536	400	1
MV 52 537	500	1
MV 52 538	600	1

TO BE CONTINUED ON NEXT PAGE

(TO BE CONTINUED)

BFR 60 90° BEND

Code	Width (mm)	Pack Carton
FINISH: EZ		
MV 52 430	50	1
MV 52 431	100	1
MV 52 432	150	1
MV 52 433	200	1
MV 52 434	250	1
MV 52 435	300	1
MV 52 436	400	1
MV 52 437	500	1
MV 52 438	600	1
FINISH: GAC		
MV 52 230	50	1
MV 52 231	100	1
MV 52 232	150	1
MV 52 233	200	1
MV 52 234	250	1
MV 52 235	300	1
MV 52 236	400	1
MV 52 237	500	1
MV 52 238	600	1
FINISH: STAINLESS STEEL		
MV 52 630	50	1
MV 52 631	100	1
MV 52 632	150	1
MV 52 633	200	1
MV 52 635	300	1
MV 52 636	400	1
MV 52 637	500	1
MV 52 638	600	1

NOTE: articles available on direct order or through our distributor.

BFR 110 90° BEND

Code	Width (mm)	Pack Carton
FINISH: Z100		
MV 52 542	150	1
MV 52 543	200	1
MV 52 545	300	1
MV 52 546	400	1
MV 52 547	500	1
MV 52 548	600	1
FINISH: EZ		
MV 52 442	150	1
MV 52 443	200	1
MV 52 445	300	1
MV 52 446	400	1
MV 52 447	500	1
MV 52 448	600	1
FINISH: GAC		
MV 52 242	150	1
MV 52 243	200	1
MV 52 245	300	1
MV 52 246	400	1
MV 52 247	500	1
MV 52 248	600	1
FINISH: STAINLESS STEEL		
MV 52 642	150	1
MV 52 643	200	1
MV 52 645	300	1
MV 52 646	400	1
MV 52 647	500	1
MV 52 648	600	1

NOTE: articles available on direct order or through our distributor.

MV52443



45° HORIZONTAL ELBOWS

MV53520



BFR 30 45° BEND		
Code	Width (mm)	Pack Carton
FINISH: Z100		
MV 53 520	50	1
MV 53 521	100	1
MV 53 522	150	1
MV 53 523	200	1
MV 53 525	300	1
FINISH: EZ		
MV 53 420	50	1
MV 53 421	100	1
MV 53 422	150	1
MV 53 423	200	1
MV 53 425	300	1
FINISH: GAC		
MV 53 220	50	1
MV 53 221	100	1
MV 53 222	150	1
MV 53 223	200	1
MV 53 225	300	1
FINISH: STAINLESS STEEL		
MV 53 620	50	1
MV 53 621	100	1
MV 53 622	150	1
MV 53 623	200	1
MV 53 625	300	1

NOTE: articles available on direct order or through our distributor.

MV53531



BFR 60 45° BEND		
Code	Width (mm)	Pack Carton
FINISH: Z100		
MV 53 530	50	1
MV 53 531	100	1
MV 53 532	150	1
MV 53 533	200	1
MV 53 534	250	1
MV 53 535	300	1
MV 53 536	400	1
MV 53 537	500	1
MV 53 538	600	1
FINISH: EZ		
MV 53 430	50	1
MV 53 431	100	1
MV 53 432	150	1
MV 53 433	200	1
MV 53 434	250	1
MV 53 435	300	1
MV 53 436	400	1
MV 53 437	500	1
MV 53 438	600	1
FINISH: GAC		
MV 53 230	50	1
MV 53 231	100	1
MV 53 232	150	1
MV 53 233	200	1
MV 53 234	250	1
MV 53 235	300	1
MV 53 236	400	1
MV 53 237	500	1
MV 53 238	600	1

TO BE CONTINUED ON NEXT PAGE

(TO BE CONTINUED)

BFR 60 45° BEND

Code	Width (mm)	Pack Carton
FINISH: STAINLESS STEEL		
MV 53 630	50	1
MV 53 631	100	1
MV 53 632	150	1
MV 53 633	200	1
MV 53 635	300	1
MV 53 636	400	1
MV 53 637	500	1
MV 53 638	600	1

NOTE: articles available on direct order or through our distributor.

BFR 110 45° BEND

Code	Width (mm)	Pack Carton
FINISH: Z100		
MV 53 542	150	1
MV 53 543	200	1
MV 53 545	300	1
MV 53 546	400	1
MV 53 547	500	1
MV 53 548	600	1
FINISH: EZ		
MV 53 442	150	1
MV 53 443	200	1
MV 53 445	300	1
MV 53 446	400	1
MV 53 447	500	1
MV 53 448	600	1
FINISH: GAC		
MV 53 242	150	1
MV 53 243	200	1
MV 53 245	300	1
MV 53 246	400	1
MV 53 247	500	1
MV 53 248	600	1
FINISH: STAINLESS STEEL		
MV 53 642	150	1
MV 53 643	200	1
MV 53 645	300	1
MV 53 646	400	1
MV 53 647	500	1
MV 53 648	600	1

NOTE: articles available on direct order or through our distributor.

MV53543



PENDANT AND FIXING ACCESSORIES

MV64670



AISI 304 STAINLESS STEEL SUPPORT

Code	Length (mm)	Pack Carton
MV 64 670	100	30
MV 64 671	200	30
MV 64 672	300	30
MV 64 673	400	30
MV 64 674	500	25

Fixing with stainless steel bolt TRCC 6x20 MV66620 and stainless steel counter clamping washer MV51621.

MV51130



UNIVERSAL SUPPORTS BFR

Code	Width (mm)	Pack Carton
FINISH: Z 275		
MV 51 130	100	100
MV 51 131	150	70
MV 51 132	200	50
MV 51 133	300	40
MV 51 134	400	25
MV 51 135	500	25
MV 51 136	1000	10
MV 51 137	1500	10
MV 51 138	2000	10
FINISH: GAC		
MV 51 230	100	100
MV 51 231	150	70
MV 51 232	200	50
MV 51 233	300	40
MV 51 234	400	25
MV 51 235	500	25
MV 51 236	1000	10
MV 51 237	1500	10
MV 51 238	2000	10
FINISH: STAINLESS STEEL		
MV 51 630	100	100
MV 51 631	150	70
MV 51 632	200	50
MV 51 633	300	40
MV 51 634	400	25
MV 51 635	500	25
MV 51 639	600	25

MV51103



WALL MOUNTING BRACKET / JUNCTION BOX SUPPORT - BFR 60-110

Code	Description	Finish	Pack Carton
MV 51 103	BFR Wall mounting bracket width 50 / 100	Z 275	100
MV 51 203	BFR Wall mounting bracket width 50 / 100	GAC	100

MV64161



HIGH BAY SUPPORT

Code	Description	Suitable for	Finish	Pack Carton
MV 64 161	Suspension bracket	BFR 30/60 width 50/100	Z 275	50
MV 64 261	Suspension bracket	BFR 30/60 width 50/100	GAC	50
MV 64 661	Suspension bracket	BFR 30/60 width 50/100	Stainless steel	50

MV51100



FILMATIC - RAPID FASTENING FOR OMEGA BRACKET

Code	Description	Finish	Pack Carton
MV 51 100	FILMATIC fixing clip for OMEGA fixing bracket	Z 275	10
MV 51 600	FILMATIC fixing clip for OMEGA fixing bracket	Stainless steel	10

BFR RANGE

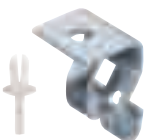
MV51101



EXTERNAL SUPPORT FOR RIGID CONDUITS/JUNCTION BOXES

Code	Description	Finish	Pack Carton
MV 51 101	Fixing BFR width 50	Z 275	100
MV 51 201	Fixing BFR width 50	GAC	100
MV 51 601	Fixing BFR width 50	Stainless steel	100

MV51105



SUSPENSION TIE

Code	Description	Suitable for	Finish	Pack Carton
MV 51 105	Suspension hanger	BFR	Z 275	100
MV 51 205	Suspension hanger	BFR	GAC	100
MV 51 605	Suspension hanger	BFR	Stainless steel	100
MV 51 806	Safety rivet			100

Use threaded bar \varnothing 8.

MV51402



CENTRE SUSPENSION CLAMP

Code	Description	Suitable for	Finish	Pack Carton
MV 51 402	Suspension plate	BFR width 100	Bichro	100
MV 51 202	Suspension plate	BFR width 100	Dacro	100
MV 51 602	Suspension plate	BFR width 100	Stainless steel	100

Use threaded bar \varnothing 6.

MV64162



SUSPENSION FOR UNIVERSAL SUPPORTS

Code	Description	Finish	Pack Carton
MV 64 162	universal support Double tray hanger with	Z 275	60
MV 64 262	universal support Double tray hanger with	GAC	60
MV 64 662	universal support Double tray hanger with	Stainless steel	60

MV51140



CENTRAL SUSPENSION

Code	Description	Suitable for	Finish	Pack Carton
MV 51 140	Drop rod hanger	BFR width 100	Z 275	50
MV 51 240	Drop rod hanger	BFR width 100	GAC	50

Use threaded bar \varnothing 6.

MV51107

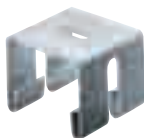


LAMP SUPPORT AND CENTRAL SUSPENSION

Code	Description	Suitable for	Finish	Pack Carton
MV 51 107	Lamp suspension suspension	BFR width 50	Z 275	100
MV 51 207	suspension Lamp suspension	BFR width 50	GAC	100
MV 51 607	Lamp suspension suspension	BFR width 50	Stainless steel	100

Use threaded bar \varnothing 6.

MV51108



LAMP SUPPORT

Code	Description	Suitable for	Finish	Pack Carton
MV 51 108	Lamp suspension	BFR width 100/200/400/600	Z 275	100
MV 51 208	Lamp suspension	BFR width 100/200/400/600	GAC	100
MV 51 608	Lamp suspension	BFR width 100/200/400/600	Stainless steel	100

BENDING AND CUTTING EQUIPMENT

PLIERS

MV51904



BOLT CUTTER

Code	Suitable for	Pack Carton
MV 51 904	BFR - BF	1

AUTOMATIC EQUIPMENT

MV51943



AUTOMATIC SPEEDYCURVA

Code	Description	Weight (Kg)	Pack Carton
MV 51 943	Automatic equipment for cutting and bending	340	1

CHARACTERISTICS: closed dimensions (LxHxD) 800x900x900 mm, open dimensions (LxHxD) 1400x900x900 mm, power supply 400 V -3P+E, absorption 1.1 kW, supplied with wheels. Reference standards: machinery directive 392/89 EEC, safety EN 294, EN 349.

SPARE PARTS

MV51945



SPARE BLADES

Code	Description	Suitable for	Pack Carton
MV 51 945	Kit spare blade	Speedycurva automatic	1

ACCESSORIES

MV51946



EARTH TERMINAL

Code	Material	Max. section flex. cables	Pack Carton
MV 51 946	Brass	16 mm ²	10/100

MV51947



IDENTIFICATION DIE

Code	Material	Dimension	Pack Carton
MV 51 947	PVC	90x40 mm	50/500