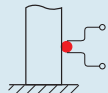


44 MS - TRAILING AND MODULAR TERMINAL BLOCKS

GWT 850°C



EN 60695-2-11

TP 125°C



EN 60695-10-2

TRAILING TERMINALS BLOCKS



GW44665

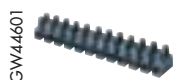
TRAILING TERMINAL BLOCKS IN MODULAR BARS FOR JUNCTION BOXES

- 450V - T 85°C - TRANSPARENT - IP20

Code	Max. section flex. cables	Min. section flex. cables	No. poles per bar	Pack Carton
TYPE OF SCREW: SLOTTED				
GW 44 661	2,5 mm ²	1 mm ²	10	10/450
GW 44 665	4 mm ²	1,5 mm ²	10	10/450
GW 44 662	6 mm ²	2,5 mm ²	10	10/450
GW 44 663	10 mm ²	4 mm ²	10	10/300
GW 44 664	16 mm ²	6 mm ²	5	10/240
TYPE OF SCREW: SOCKET HEAD 5MM				
GW 44 666	25 mm ²	10 mm ²	1	5/150
GW 44 667	35 mm ²	16 mm ²	1	5/150

CHARACTERISTICS: GW44666 and GW44667 supplied in single terminals.

MODULAR TERMINAL BLOCKS



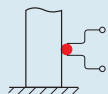
GW44601

POLYMER 12 POLE MODULAR TERMINAL BLOCKS WITH BRASS TERMINALS - 450V - T 85°C - BLACK

Code	Max. section flex. cables	Min. section flex. cables	hole Ø	Max load	External Dim. LxHxD (mm)	Fixing	Pack Carton
GW 44 601	2,5 mm ²	0,75 mm ²	2.9 mm	24 A	95x15x16	With screw	10/480
GW 44 602	4 mm ²	1,5 mm ²	3.4 mm	32 A	117x17x20	With screw	10/240
GW 44 603	10 mm ²	4 mm ²	4.4 mm	57 A	141x20x23	With screw	10/160
GW 44 604	16 mm ²	6 mm ²	5.8 mm	76 A	172x25x32	With screw	10/120
GW 44 605	25 mm ²	10 mm ²	7.4 mm	101 A	210x34x38	With screw	3/36

44 MM - MULTI-POLE TERMINAL BLOCKS

GWT 850°C



EN 60695-2-11

TP 125°C



EN 60695-10-2

PRESS-ON FIXING



GW44608

PRESS-ON MULTI-POLE TERMINAL BLOCKS - 450 V - GREY RAL 7035

Code	Connecting capacity	Pack Carton
GW 44 606	3 holes x 4 mm ²	10/100
GW 44 607	4 holes x 4 mm ²	10/100
GW 44 608	5 holes x 4 mm ²	10/100

NOTES: press-on fixing on 44 CE range boxes. (See "Selection Guide" synoptic table).

SCREW-ON FIXING

GW44610



SCREW-ON FEEDTHROUGH MULTI-POLE TERMINAL BLOCKS - - 750V- T 85°C - GREY RAL 7035

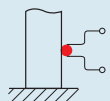
Code	Connecting capacity	Pack Carton
GW 44 609	3 holes x 6 mm ²	10/100
GW 44 610	5 holes x 6 mm ²	10/100
GW 44 611	3 holes x 16 mm ²	10/100
GW 44 612	5 holes x 16 mm ²	10/100
GW 44 613	3 holes x 35 mm ²	1/10
GW 44 614	5 holes x 35 mm ²	1/10

ACCESSORIES SUPPLIED: fixing screws.

APPLICATIONS: for joining main cables, ensuring continuity of outer sheathing.

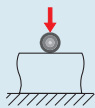
44 ME - SINGLE -POLE EQUIPOTENTIAL TERMINAL BLOCK

GWT 850°C



EN 60695-2-11

TP 125°C



EN 60695-10-2

44 RANGE

MODULAR TERMINAL BLOCKS

GW44671



SINGLE-POLE EQUIPOTENTIAL TERMINAL BLOCKS WITH BLANKET GRIP - - 450V - T 85°C - TRANSPARENT

Code	Connecting capacity	Pack Carton
GW 44 671	3 holes x 6 mm ²	10/100
GW 44 672	5 holes x 6 mm ²	10/100
GW 44 673	4 holes x 16 mm ²	10/50
GW 44 674	3 holes x 6 mm ² 2 holes x 16 mm ²	10/50
GW 44 675	9 holes x 6 mm ² 2 holes x 16 mm ²	5/25
GW 44 676	4 holes x 16 mm ² 2 holes x 35 mm ²	1/10

ACCESSORIES SUPPLIED: self-adhesive labels for the identification of electrical lines.

APPLICATIONS suitable for making equipotential nodes.

NOTE: GW44676 for joining main cables ensuring continuity of outer sheathing.

ACCESSORIES

GW44681



SUPPORT FOR FIXING EQUIPOTENTIAL TERMINAL BLOCKS ON RAIL DIN

Code	For equipot. term.blocks	Fixing of the terminal block	Pack Carton
GW 44 681	All types	Snap fit	100

GW44682



ADAPTOR FOR FIXING EQUIPOTENTIAL TERMINAL BLOCKS

Code	For equipot. term.blocks	Fixing of the terminal block	Pack Carton
GW 44 682	All types	Lock-joint	200

ACCESSORIES SUPPLIED: screws for fixing adaptor.

APPLICATIONS: it permits fixing the equipotential terminal blocks onto plates or directly onto the bases in the junction boxes and watertight boxes.

GW44683



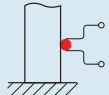
RAIL FOR FIXING EQUIPOTENTIAL TERMINAL BLOCKS IN PTC FLUSH-MOUNTING MODULAR BOXES

Code	Installable terminal blocks	Pack Carton
GW 44 683	4 x GW44673 2 x GW44671 1 x GW44675 2 x GW44674 3 x GW44672	1/50

CHARACTERISTICS: 1 compartment wide. For applications with PTC boxes with 2 and 3 compartments, the rail is fixed on the dividers GW48024.

44 MP - MODULAR DIVIDING TERMINAL BLOCK

GWT 850°C



EN 60695-2-11

TP 125°C



EN 60695-10-2

SINGLE-POLE

GW44651



SINGLE-POLE MODULAR DIVIDING TERMINAL BLOCK FIXING ON PLATE OR ON EN 50022 RAIL - IP20

Code	External Dim. LxHxD (mm)	No. EN 50022 modules	Input connecting capacity	Output connecting capacity	Pack Carton
------	-----------------------------	-------------------------	------------------------------	-------------------------------	----------------

RATED CURRENT (A): 160

GW 44 651	35x92x49	2	1x10-70 mm ²	6x2,5-16 mm ²	1/5
-----------	----------	---	-------------------------	--------------------------	-----

CHARACTERISTICS: possibility of making single-, two-, three- and four-pole dividers. Terminal grip torque: cables entering 4Nm, cables exiting 1.5 Nm.

TWO-POLE

GW44691



TWO-POLE MODULAR DIVIDING TERMINAL BLOCKS WITH TRANSPARENT

PROTECTION COVER FIXING ON PLATE OR EN 50022 - 500 V RAIL - T 80°C

Code	External Dim. LxHxD (mm)	No. EN 50022 modules	Input connecting capacity	Output connecting capacity	Pack Carton
------	-----------------------------	-------------------------	------------------------------	-------------------------------	----------------

RATED CURRENT (A): 100

GW 44 691	70x49x50	4	2x6-25 mm ²	(5x2,5-10) mm ²	2/20
-----------	----------	---	------------------------	----------------------------	------

RATED CURRENT (A): 125

GW 44 693	141x49x50	8	2x10-35 mm ²	(2x6-25+11x2,5-10) mm ²	1/10
-----------	-----------	---	-------------------------	------------------------------------	------

ACCESSORIES SUPPLIED: 2 labels for circuit identification.

CHARACTERISTICS: the connection capacity indicated is "per pole".

FOUR-POLE

GW44696



THREE-POLE MODULAR DIVIDING TERMINAL BLOCKS WITH TRANSPARENT

PROTECTION COVER FIXING ON PLATE OR EN 50022 - 500V RAIL - T 80°C

Code	External Dim. LxHxD (mm)	No. EN 50022 modules	Input connecting capacity	Output connecting capacity	Pack Carton
------	-----------------------------	-------------------------	------------------------------	-------------------------------	----------------

RATED CURRENT (A): 100

GW 44 696	70x88,5x50	4	2x6-25 mm ²	(5x2,5-10) mm ²	2/20
-----------	------------	---	------------------------	----------------------------	------

RATED CURRENT (A): 125

GW 44 698	141x88,5x50	8	2x10-35 mm ²	(2x6-25+11x2,5-10) mm ²	1/10
-----------	-------------	---	-------------------------	------------------------------------	------

RATED CURRENT (A): 160

GW 44 699	185x75x135	10	(1x25-50) mm ²	(2x16-35+2x10-25+8x6-16) mm ²	1/5
-----------	------------	----	---------------------------	--	-----

ACCESSORIES SUPPLIED: GW44696 and GW44698 with 4 labels for circuit identification.

CHARACTERISTICS: GW44699 entry cables in lateral position;

pair of tightening clamps: cables entering 4 Nm, cables exiting 1.5 Nm. The connection capacity indicated is "per pole".