

STRUCTURES

IP30 DISTRIBUTION BOARDS

GW47002



ONE-PIECE BOARD IN PAINTED SHEET STEEL COMPLETE WITH FRONT FINISHING FRAME IN PLASTIC WITHOUT DOOR

Code	Functional dim. LxH (mm)	Depth D (mm)	Dispersable power (W)	Pack Carton
GW 47 001	600x600	170	170	1
GW 47 002	600x800	170	197	1
GW 47 003	600x1000	170	206	1
GW 47 004	600x1200	170	213	1

NOTES: dispersible power calculated according to CEI 23-49.

ACCESSORIES SUPPLIED: 4 brackets complete with screws for wall fixing. 4 cable gland plates (upper, lower and side) complete with fixing screws.

IP40 DISTRIBUTION BOARDS

GW47014



ONE-PIECE BOARDS IN PAINTED SHEET STEEL -

SMOKED CURVED TEMPERED SAFETY GLASS DOOR EQUIPPED WITH 2 LOCKS

Code	Functional dim. LxH (mm)	Depth D (mm)	Dispersable power (W)	Pack Carton
GW 47 011	600x600	170	140	1
GW 47 012	600x800	170	165	1
GW 47 013	600x1000	170	176	1
GW 47 014	600x1200	170	180	1

NOTES: dispersible power calculated according to CEI 23-49.

ACCESSORIES SUPPLIED: 4 brackets complete with screws for wall fixing. 4 cable gland plates (upper, lower and side) complete with fixing screws. 2 double-fin keys.

GW47024



ONE-PIECE BOARDS IN PAINTED SHEET STEEL - SOLID SHEET METAL DOOR EQUIPPED WITH 2 LOCKS

Code	Functional dim. LxH (mm)	Depth D (mm)	Dispersable power (W)	Pack Carton
GW 47 021	600x600	170	146	1
GW 47 022	600x800	170	168	1
GW 47 023	600x1000	170	176	1
GW 47 024	600x1200	170	181	1

NOTES: dispersible power calculated according to CEI 23-49.

ACCESSORIES SUPPLIED: 4 brackets complete with screws for wall fixing. 4 cable gland plates (upper, lower and side) complete with fixing screws. 2 double-fin keys.

IP55 DISTRIBUTION BOARDS

47 CVX 160 RANGE

GW47034



ONE-PIECE BOARDS IN PAINTED SHEET STEEL

SMOKED CURVED TEMPERED SAFETY GLASS DOOR EQUIPPED WITH 2 LOCKS

Code	Functional dim. LxH (mm)	Depth D (mm)	Dispersable power (W)	Pack Carton
GW 47 031	600x600	170	123	1
GW 47 032	600x800	170	135	1
GW 47 033	600x1000	170	142	1
GW 47 034	600x1200	170	146	1

NOTES: dispersible power calculated according to CEI 23-49.

ACCESSORIES SUPPLIED: 4 brackets complete with screws for wall fixing. 4 cable gland plates (upper, lower and side). 2 double-fin keys.

CHARACTERISTICS: sealing gasket applied on door and cable gland plates.

GW47044



ONE-PIECE BOARDS IN PAINTED SHEET STEEL - SOLID SHEET METAL DOOR EQUIPPED WITH 2 LOCKS

Code	Functional dim. LxH (mm)	Depth D (mm)	Dispersable power (W)	Pack Carton
GW 47 041	600x600	170	124	1
GW 47 042	600x800	170	136	1
GW 47 043	600x1000	170	144	1
GW 47 044	600x1200	170	148	1

NOTES: dispersible power calculated according to CEI 23-49.

ACCESSORIES SUPPLIED: 4 brackets complete with screws for wall fixing. 4 cable gland plates (upper, lower and side) complete with fixing screws. 2 double-fin keys.

CHARACTERISTICS: sealing gasket applied on door and cable gland plates.

IP65 DISTRIBUTION BOARDS

GW47064



ONE-PIECE BOARDS IN PAINTED SHEET STEEL

SOLID SHEET METAL DOOR EQUIPPED WITH ROD-MECHANISM LOCK

Code	Functional dim. LxH (mm)	Depth D (mm)	Dispersable power (W)	Pack Carton
GW 47 062	600x800	170	131	1
GW 47 063	600x1000	170	138	1
GW 47 064	600x1200	170	143	1

NOTES: dispersible power calculated according to CEI 23-49.

ACCESSORIES SUPPLIED: 4 brackets complete with screws for wall fixing. Key in Zn+Al+Mg alloy.

CHARACTERISTICS: sealing gasket applied on door. Single lock with transmission mechanism shaft with 4 closure points on door.

FRONT CONFIGURATION

KIT FOR THE INSTALLATION OF DEVICES ON DIN RAILS

GW47172



KIT FOR INSTALLING MODULAR AND MOULDED-CASE DEVICES (90 RANGE) UP TO 160A (MTS 160 RANGE)

COMPLETE WITH FRONT PANELS WITH WINDOW AND MOUNTING RAIL DIN EN 50 022 (DIN 35)

Code	Dimension BxH (mm)	Section dim. HxD (mm)	Pack Carton
MODULES: 24			
GW 47 171	600x150	35x15	1/10
GW 47 172	600x200	35x15	1/8

ACCESSORIES SUPPLIED: module masks. Pair of hinges. Galvanised sheet metal EN 50022 (DIN 35) rail adjustable in depth.

CHARACTERISTICS: front panel colour Grey RAL 7035 in quick coupling insulation material with ergonomic socket-outlet colour Blue RAL 5003, prearrangement of the panels for rotation hinges (included).

NOTES: the special kit for fixing the MTS 160 to the DIN rail is supplied with the residual current device; should an MTS 160 be mounted without a residual current device, order code GW98060 or GW98061 in the case of solenoid control. Combining modular and boxed devices requires the depth adapter GW49209.

INSTALLATION KIT FOR FIXED MOULDED-CASE DEVICES ON PLATE

GW47274



INSTALLATION KIT FOR MOULDED-CASE DEVICES UP TO 160A (MTS 160 RANGE)

COMPLETE WITH PERFORATED FRONT PANEL AND FIXING PLATE

Code	Dimension BxH (mm)	For switch	No. poles	Type	Installation	Pack Carton
MODULES: 24						
GW 47 274	600x200	MTS 160	3P	RCB	Horizontal	1/5
GW 47 275	600x200	MTS 160	4P	RCB	Horizontal	1/5
GW 47 276	600x200	MTS 160	4P	RCB+RCCB	Horizontal	1/5

ACCESSORIES SUPPLIED: galvanised sheet steel plate. Fixing accessories.

INSTALLATION KIT FOR COUNTRY-SPECIFIC DEVICES

GW47261



FRONT PANEL COMPLETE WITH MOUNTING RAILS EN 50 022 AND ENCLOSURE FOR

HOUSING POWER LIMITING CIRCUIT BREAKER ICP IN=40A - SPANISH STANDARD

Code	Suited for EN 50022	Dimension BxH (mm)	No. EN 50022 mod. ICP sect.	Pack Carton
GW 47 261	36 modules (2x18)	600x300	4	1/5

ACCESSORIES SUPPLIED: enclosure for housing "ICP" power limiting circuit breaker with UNESA 1407-D classification, CS-ICP 32.

Module masks. Fixing accessories.

GW47262



FRONT PANELS WITH WINDOW COMPLETE WITH EN 50 022 RAILS

AND PLATES FOR FIXING SUPPORT BASES FOR THE EDF BLUE TARIFF

CONNECTING SWITCH - FRENCH STANDARD

Code	Suited for EN 50022	Dimension BxH (mm)	Pack Carton
GW 47 262	24 modules (2x12)	600x300	1/5

ACCESSORIES SUPPLIED: module masks. Fixing accessories. Earthing set.

CHARACTERISTICS: plate in pre-galvanised material with prearrangement for installing the main switch; possibility of mounting modular devices or DIN coupling components on EN 50022 side profiles; painted sheet metal panels (Grey RAL 7035).

NOTES: they allow 40 CD range support bases to be installed. (GW40511, GW40512, GW40513, GW40514) for EDF switch and electronic meter.

47 CVX 160 RANGE

SURFACE-MOUNTING DISTRIBUTION BOARDS UP TO 160A



FRONT PANELS



FRONT PANELS WITH WINDOW FOR MODULAR DEVICES

Code	Dimension BxH (mm)	Pack Carton
MODULES: 24		
GW 47 178	600 x 150	1/10
GW 47 179	600 x 200	1/10

ACCESSORIES SUPPLIED: module masks, pair of hinges.

CHARACTERISTICS: front panel colour Grey RAL 7035, in quick coupling insulation material with ergonomic socket-outlet colour Blue RAL 5003, prearrangement of the panels for rotation hinges (included).



SOLID FRONT PANELS

Code	Dimension BxH (mm)	Pack Carton
MODULES: 24		
GW 47 173	600x50	1/10
GW 47 174	600x150	1/10
GW 47 175	600x200	1/10

ACCESSORIES SUPPLIED: 2 hinges.



FRONT PANELS FOR MEASURING INSTRUMENTS AND THREE-WAY SWITCHES

Code	Dimension BxH (mm)	3-way switch no. x hole Ø	Instruments N. x dimensions	Pack Carton
MODULES: 24				
GW 47 176	600x200	1 Ø9,5 mm	4 72x72 mm	1/10
GW 47 177	600x200	1 Ø9,5 mm	4 96x96 mm	1/10

ACCESSORIES SUPPLIED: 2 hinges.

INTERNAL CONFIGURATION

DIN RAIL KIT



DIN RAILS FOR MODULAR DEVICES AND TERMINALS COMPLETE WITH BRACKETS AND SUPPORTS FOR ASSEMBLY

Code	Section dim. HxD (mm)	Profile	Material	Pack Carton
MODULES: 24				
GW 47 181	35x15	EN 50022 (DIN 35)	Galvanized metal	1/10
GW 47 183	2x(35x7,5)	double EN 50022 (DIN 35)	Aluminium	1/10
GW 47 182	32x15	EN 50035 (G 32)	Galvanized metal	1/10

BACK-MOUNTING PLATES



BACK-MOUNTING PLATES FOR NON-MODULAR DEVICES COMPLETE WITH MOUNTING SUPPORTS

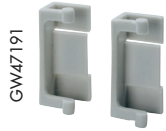
Code	Dimension BxH (mm)	No. mounting straps	Pack Carton
MODULES: 24			
GW 47 186	600x200	2	1/5
GW 47 187	600x400	4	1/5

ACCESSORIES SUPPLIED: support brackets and relative fixing accessories.

TECHNICAL CHARACTERISTICS FROM PAGE 402

COMPLEMENTARY ITEMS

ACCESSORIES



GW47191

2 HINGES FOR FRONT PANELS

Code	Fixing type	Opening angle	Suitable for	Pack Carton
GW 47 191	Clip	90°	For panels H higher 50 mm	1/20

ACCESSORIES SUPPLIED: 1 panel closing plug.



GW47194

SUPPORTS FOR THE FIXING OF WIRING TRUNKING

Code	Fixing type	Quantity	Pack Carton
GW 47 194	Clip on functional profile	2 pieces	1/20

APPLICATIONS: mounting wiring ducts up to 80 mm wide vertically and up to 40 mm horizontally.



GW47291

BLANKING MODULE PROFILE IN PLASTIC MATERIAL - GREY RAL 7035

Code	Modules	Pack Carton
GW 47 291	24	10

CHARACTERISTICS: clip fixing on DIN drilled panels.



GW49209

DEPTH ADAPTOR

Code	Length (mm)	Pack Carton
GW 49 209	600	1

APPLICATIONS: compensation of the different installation depths of modular (90 range) and moulded-case (MTS 160 range) devices.



GW47193

EARTH BAR WITH THREADED HOLES FOR THE CONNECTION OF EQUIPOTENTIAL BONDING

Code	Dimensions LxHxD (mm)	N.+ diam. of threaded holes	Step drilling	For distribution boards	Pack Carton
GW 47 193	575x20x5	24 x M6	18 mm	Flush and surface mounting	1/5

ACCESSORIES SUPPLIED: fixing accessories (2 screws and 2 nuts in cage M6). 24 tin-plated screws M6.



GW46447

MISCELLANEOUS ACCESSORIES

Code	Description	Characteristics	Pack Carton
GW 46 447	Adhesive document pocket	dimensions 310x230 mm	1/10
GW 47 192	security lock	(Yale type) key with standardized code	1/10
GW 47 195	Nuts in cage	galvanized steel	10/100
GW 47 196	Aerosol spray	colour Grey RAL 7035	1/6

SPARE PARTS



GW47114

SMOKED CURVED TEMPERED SAFETY GLASS DOORS FOR IP40 BOARDS

Code	For encl. dim.LxH (mm)	Pack Carton
GW 47 111	600x600	1
GW 47 112	600x800	1
GW 47 113	600x1000	1
GW 47 114	600x1200	1

ACCESSORIES SUPPLIED: 2 mounting pins. 2 double-fin keys.

47 CVX 160 RANGE

SURFACE-MOUNTING DISTRIBUTION BOARDS UP TO 160A

GEWISS

GW47123



SOLID DOORS IN PAINTED SHEET METAL FOR IP40 BOARDS

Code	For encl. dim.LxH (mm)	Pack Carton
GW 47 121	600x600	1
GW 47 122	600x800	1
GW 47 123	600x1000	1
GW 47 124	600x1200	1

ACCESSORIES SUPPLIED: 2 mounting pins. 2 double-fin keys.

GW47133



SMOKED CURVED TEMPERED SAFETY GLASS DOOR FOR IP55 SURFACE-MOUNTING BOARD

Code	For encl. dim.LxH (mm)	Pack Carton
GW 47 131	600x600	1
GW 47 132	600x800	1
GW 47 133	600x1000	1
GW 47 134	600x1200	1

Standard ACCESSORIES SUPPLIED: 2 mounting pins. 2 double-fin keys.

GW47143



SOLID DOORS IN PAINTED SHEET METAL FOR IP55 SURFACE-MOUNTING BOARDS

Code	For encl. dim.LxH (mm)	Pack Carton
GW 47 141	600x600	1
GW 47 142	600x800	1
GW 47 143	600x1000	1
GW 47 144	600x1200	1

ACCESSORIES SUPPLIED: 2 mounting pins. 2 double-fin keys.

GW47164



SOLID DOORS IN PAINTED SHEET STEEL FOR IP65 SURFACE-MOUNTING BOARDS

EQUIPPED WITH ROD-MECHANISM CLOSURES

Code	For encl. dim.LxH (mm)	Pack Carton
GW 47 162	600x800	1
GW 47 163	600x1000	1
GW 47 164	600x1200	1

ACCESSORIES SUPPLIED: 4 mounting pins. Key in Zn+Al+Mg alloy.

GW47199



CABLE GLAND PLATES FOR SURFACE-MOUNTING IP40 AND IP55 BOARDS

Code	Description	Material	Pack Carton
GW 47 198	Top/bottom plate	Plastic	1/10
GW 47 199	Side plate	Plastic	1/10

47 CVX 160
RANGE