

STRUCTURES

IP30 DISTRIBUTION BOARDS



GW47072

PREASSEMBLED BOARDS IN PAINTED SHEET STEEL COMPLETE WITH OUTFIT FOR MODULAR DEVICES WITHOUT DOOR

Code	Functional dim. LxH (mm)	Depth D (mm)	No. EN 50022 modules	Dispersable power (W)	Pack Carton
GW 47 072	600x600	105+25	96 (24x4)	162	1
GW 47 073	600x800	105+25	120 (24x5)	186	1
GW 47 074	600x1000	105+25	144 (24x6)	205	1

NOTES: dispersible power calculated according to CEI 23-49.

ACCESSORIES SUPPLIED: mortar guard. Service identification labels.

Front panels complete with EN 50022 (DIN 35) rail and fixing accessories. Module masks.

IP40 DISTRIBUTION BOARDS



GW47082

PREASSEMBLED BOARDS IN PAINTED SHEET STEEL COMPLETE WITH OUTFIT FOR MODULAR DEVICES SMOKED CURVED TEMPERED SAFETY GLASS DOOR EQUIPPED WITH 2 LOCKS

Code	Functional dim. LxH (mm)	Depth D (mm)	No. EN 50022 modules	Dispersable power (W)	Pack Carton
GW 47 082	600x600	105+65	96 (24x4)	110	1
GW 47 083	600x800	105+65	120 (24x5)	125	1
GW 47 084	600x1000	105+65	144 (24x6)	141	1

NOTES: dispersible power calculated according to CEI 23-49.

ACCESSORIES SUPPLIED: mortar guard. Service identification label.

Front panels complete with EN 50022 (DIN 35) rail and fixing accessories. Module masks. 2 double-finned keys.



GW47087

PREASSEMBLED BOARDS IN PAINTED SHEET STEEL COMPLETE WITH OUTFIT FOR MODULAR DEVICES SOLID SHEET METAL DOOR EQUIPPED WITH 2 LOCKS

Code	Functional dim. LxH (mm)	Depth D (mm)	No. EN 50022 modules	Dispersable power (W)	Pack Carton
GW 47 087	600x600	105+34	96 (24x4)	115	1
GW 47 088	600x800	105+34	120 (24x5)	130	1
GW 47 089	600x1000	105+34	144 (24x6)	146	1

NOTES: dispersible power calculated according to CEI 23-49.

ACCESSORIES SUPPLIED: mortar guard. Service identification label.

Front panels complete with EN 50022 (DIN 35) rail and fixing accessories. Module masks. 2 double-finned keys.

FRONT CONFIGURATION

INSTALLATION KIT FOR COUNTRY-SPECIFIC DEVICES



GW47263

FRONT PANELS WITH WINDOW COMPLETE WITH EN 50 022 RAILS AND PLATES FOR FIXING SUPPORT BASES FOR THE EDF BLUE TARIFF CONNECTING SWITCH - FRENCH STANDARD

Code	Suited for EN 50022	Dimension BxH (mm)	Pack Carton
GW 47 263	24 modules (2x12)	600x300	1/5

ACCESSORIES SUPPLIED: Module masks. Fixing accessories. Earthing set.

FRONT PANELS



GW47179

FRONT PANELS WITH WINDOW FOR MODULAR DEVICES

Code	Dimension BxH (mm)	Pack Carton
MODULES: 24		
GW 47 178	600 x 150	1/10
GW 47 179	600 x 200	1/10

ACCESSORIES SUPPLIED: module masks, pair of hinges.

CHARACTERISTICS: front panel colour Grey RAL 7035, in quick coupling insulation material with ergonomic socket-outlet colour Blue RAL 5003, prearrangement of the panels for rotation hinges (included).

47 CVX 160i RANGE

FLUSH-MOUNTING DISTRIBUTION BOARDS UP TO 160A



GW47174

SOLID FRONT PANELS

Code	Dimension BxH (mm)	Pack Carton
MODULES: 24		
GW 47 173	600x50	1/10
GW 47 174	600x150	1/10
GW 47 175	600x200	1/10

ACCESSORIES SUPPLIED: 2 hinges.



GW47177

FRONT PANELS FOR MEASURING INSTRUMENTS AND THREE-WAY SWITCHES

Code	Dimension BxH (mm)	3-way switch no. x hole Ø	Instruments N. x dimensions	Pack Carton
MODULES: 24				
GW 47 176	600x200	1 Ø9,5 mm	4 72x72 mm	1/10
GW 47 177	600x200	1 Ø9,5 mm	4 96x96 mm	1/10

ACCESSORIES SUPPLIED: 2 hinges.

INTERNAL CONFIGURATION

DIN RAIL KIT



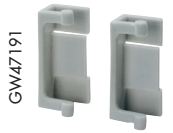
GW47251

DIN RAILS FOR MODULAR DEVICES AND TERMINALS COMPLETE WITH BRACKETS AND SUPPORTS FOR ASSEMBLY

Code	Section dim. HxD (mm)	Profile	Material	Pack Carton
MODULES: 24				
GW 47 251	35x15	EN 50022 (DIN 35)	Galvanized metal	1/10
GW 47 252	2x(35x7,5)	double EN 50022 (DIN 35)	Aluminium	1/10
GW 47 253	32x15	EN 50035 (G 32)	Galvanized metal	1/10

COMPLEMENTARY ITEMS

ACCESSORIES



GW47191

2 HINGES FOR FRONT PANELS

Code	Fixing type	Opening angle	Suitable for	Pack Carton
GW 47 191	Clip	90°	For panels H higher 50 mm	1/20

ACCESSORIES SUPPLIED: 1 panel closing plug.

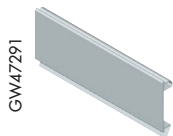


GW47194

SUPPORTS FOR THE FIXING OF WIRING TRUNKING

Code	Fixing type	Quantity	Pack Carton
GW 47 194	Clip on functional profile	2 pieces	1/20

APPLICATIONS: mounting wiring ducts up to 80 mm wide vertically and up to 40 mm horizontally.



GW47291

BLANKING MODULE PROFILE IN PLASTIC MATERIAL - GREY RAL 7035

Code	Modules	Pack Carton
GW 47 291	24	10

CHARACTERISTICS: clip fixing on DIN drilled panels.



GW49209

DEPTH ADAPTOR

Code	Length (mm)	Pack Carton
GW 49 209	600	1

APPLICATIONS: compensation of the different installation depths of modular (90 range) and moulded-case (MTS 160 range) devices.

47 CVX 160i
RANGE

TECHNICAL CHARACTERISTICS FROM PAGE 400

47 CVX 160i RANGE

FLUSH-MOUNTING DISTRIBUTION BOARDS UP TO 160A

GEWISS

GW47193



EARTH BAR WITH THREADED HOLES FOR THE CONNECTION OF EQUIPOTENTIAL BONDING

Code	Dimensions LxHxD (mm)	N.+ diam. of threaded holes	Step drilling	For distribution boards	Pack Carton
GW 47 193	575x20x5	24 x M6	18 mm	Flush and surface mounting	1/5

ACCESSORIES SUPPLIED: fixing accessories (2 screws and 2 nuts in cage M6). 24 tin-plated screws M6.

GW46447



MISCELLANEOUS ACCESSORIES

Code	Description	Characteristics	Pack Carton
GW 46 447	Adhesive document pocket	dimensions 310x230 mm	1/10
GW 47 192	security lock	(Yale type) key with standardized code	1/10
GW 47 195	Nuts in cage	galvanized steel	10/100
GW 47 196	Aerosol spray	colour Grey RAL 7035	1/6
GW 47 197	Set of 4 metal brackets	for fixing on plasterboard	1/10

APPLICATIONS: GW47195 suitable for mounting wiring ducts and complimentary items on functional profile.

SPARE PARTS

GW47113



SMOKED CURVED TEMPERED SAFETY GLASS DOORS FOR IP40 BOARDS

Code	For encl. dim.LxH (mm)	Pack Carton
GW 47 111	600x600	1
GW 47 112	600x800	1
GW 47 113	600x1000	1

ACCESSORIES SUPPLIED: 2 mounting pins. 2 double-fin keys.

GW47123



SOLID DOORS IN PAINTED SHEET METAL FOR IP40 BOARDS

Code	For encl. dim.LxH (mm)	Pack Carton
GW 47 121	600x600	1
GW 47 122	600x800	1
GW 47 123	600x1000	1

ACCESSORIES SUPPLIED: 2 mounting pins. 2 double-fin keys.

47 CVX 160i
RANGE

TECHNICAL CHARACTERISTICS FROM PAGE 400