

## COMBI SYSTEM 40

### PROTECTED ENCLOSURES FOR SYSTEM DEVICES



GW27001

#### PROTECTED UNWIRED ENCLOSURES FOR FIXED OR MOVABLE APPLICATIONS GREY RAL 7035 - IP40 - STANDARD LAYOUT

| Code      | Description | N.holes Ø23<br>with cable gland | No. knockout holes<br>Ø 23 | External Dim.<br>LxHxD (mm) | Pack<br>Carton |
|-----------|-------------|---------------------------------|----------------------------|-----------------------------|----------------|
| GW 27 001 | 1 gang      | 1                               | 3                          | 66 x 82 x 55                | 5/80           |
| GW 27 002 | 2 gang      | 1                               | 3                          | 66 x 82 x 55                | 5/80           |
| GW 27 003 | 3 gang      | 1                               | 3                          | 99 x 82 x 55                | 3/60           |
| GW 27 004 | 4 gang      |                                 | 8                          | 132 x 82 x 55               | 4/40           |



GW27005

#### PROTECTED UNWIRED ENCLOSURES FOR FIXED OR MOVABLE APPLICATIONS GREY RAL 7035 - IP40 - HORIZONTAL MULTIPLE CONFIGURATIONS

| Code      | Description | Configuration | Prearranged<br>compartment | No. knockout holes<br>Ø 23 | External Dim.<br>LxHxD (mm) | Pack<br>Carton |
|-----------|-------------|---------------|----------------------------|----------------------------|-----------------------------|----------------|
| GW 27 005 | 6 gang      | Module 3 x 2  | 2                          | 8                          | 198 x 82 x 55               | 1/30           |
| GW 27 006 | 8 gang      | Module 4 x 2  | 2                          | 10                         | 231 x 82 x 55               | 1/20           |
| GW 27 007 | 12 gang     | Module 4 x 3  | 3                          | 16                         | 330 x 82 x 55               | 1/20           |
| GW 27 008 | 16 gang     | Module 4 x 4  | 4                          | 18                         | 429 x 82 x 55               | 1/20           |

Compartments can be obtained using the special functional dividers.



GW27021

#### PROTECTED UNWIRED ENCLOSURES FOR FIXED OR MOVABLE APPLICATIONS GREY RAL 7035 - IP40 - VERTICAL MULTIPLE CONFIGURATIONS

| Code      | Description | Configuration | Prearranged<br>compartment | No. knockout holes<br>Ø 23 | External Dim.<br>LxHxD (mm) | Pack<br>Carton |
|-----------|-------------|---------------|----------------------------|----------------------------|-----------------------------|----------------|
| GW 27 021 | 4 gang      | Module 2 x 2  | 1                          | 8                          | 82 x 132 x 55               | 4/40           |
| GW 27 022 | 6 gang      | Module 2 x 3  | 3                          | 8                          | 82 x 198 x 55               | 1/30           |
| GW 27 023 | 8 gang      | Module 4 x 2  | 2                          | 10                         | 132 x 132 x 55              | 1/20           |
| GW 27 024 | 12 gang     | Module 4 x 3  | 3                          | 12                         | 132 x 198 x 55              | 1/20           |

**ACCESSORIES SUPPLIED:** cable gland for conduits of max 20 mm diameter.

**CHARACTERISTICS:** fitted for division into compartments (excluding GW27021).

Fitted for the personalisation via self-adhesive labels h=6mm and for the fixing of earth terminal GW26407.

Fitted with knockout holes on base. Full insulation can be obtained using GW44622 screwcaps.

### SELF-SUPPORTING BOXES FOR SYSTEM DEVICES



GW27603

#### SELF-BEARING DEVICE-HOLDER BOXES FOR MINI-TRUNKING FOR CABLES SINGLE- AND TWIN-TRUNKING

| Code                          | No.<br>gang | Pack<br>Carton |
|-------------------------------|-------------|----------------|
| <b>COLOUR: WHITE RAL 9010</b> |             |                |
| GW 27 603                     | 1           | 10             |
| GW 27 609                     | 2           | 10             |



GW27615

#### SELF-BEARING DEVICE-HOLDER BOXES FOR MINI-TRUNKING AND TRUNKING USED AS SKIRTING AND FRAMING

| Code                               | No.<br>gang | Pack<br>Carton |
|------------------------------------|-------------|----------------|
| <b>COLOUR: WHITE RAL 9010</b>      |             |                |
| GW 27 615                          | 3           | 10             |
| GW 27 621                          | 4           | 10             |
| GW 27 627                          | 8           | 5              |
| <b>COLOUR: ANTHRACITE RAL 7021</b> |             |                |
| GW 27 616                          | 3           | 10             |
| GW 27 622                          | 4           | 10             |
| GW 27 628                          | 8           | 5              |

## COMBI SYSTEM 55

### WATERTIGHT ENCLOSURES FOR SYSTEM DEVICES



GW27041

#### UNWIRED WATERTIGHT ENCLOSURES FOR FIXED OR MOVABLE APPLICATIONS - GREY RAL 7035

##### IP55 - STANDARD LAYOUT

| Code      | Description | N.holesØ23<br>with cable gland | No. knockout holes<br>Ø 23 | External Dim.<br>LxHxD (mm) | Pack<br>Carton |
|-----------|-------------|--------------------------------|----------------------------|-----------------------------|----------------|
| GW 27 041 | 1 gang      | 1                              | 3                          | 66 x 82 x 65                | 5/60           |
| GW 27 042 | 2 gang      | 1                              | 3                          | 66 x 82 x 65                | 5/60           |
| GW 27 043 | 3 gang      | 1                              | 3                          | 99 x 82 x 65                | 2/40           |
| GW 27 044 | 4 gang      |                                | 8                          | 132 x 82 x 65               | 3/30           |



GW27051

#### UNWIRED WATERTIGHT ENCLOSURES FOR FIXED OR MOVABLE APPLICATIONS GREY RAL 7035 - IP55

##### VERTICAL MULTIPLE CONFIGURATIONS

| Code      | Description | Configuration | Prearranged<br>compartment | No. knockout holes<br>Ø 23 | External Dim.<br>LxHxD (mm) | Pack<br>Carton |
|-----------|-------------|---------------|----------------------------|----------------------------|-----------------------------|----------------|
| GW 27 051 | 8 gang      | Module 4 x 2  | 2                          | 10                         | 132 x 171 x 65              | 1/20           |
| GW 27 052 | 12 gang     | Module 4 x 3  | 3                          | 12                         | 132 x 258 x 65              | 1/15           |

**ACCESSORIES SUPPLIED:** cable gland for conduits of max external diameter 20 mm.

**CHARACTERISTICS:** fitted for division into compartments. Fitted for customization using self-adhesive labels h = 6 mm. Fitted for the fixing of GW26407 earth terminal. Fitted with knockout holes on base also.



GW27056

#### WATERTIGHT GARDEN ENCLOSURES FOR APPLICATION ON POLE - GREY RAL 7035 - IP55

| Code      | Description | Fixing       | For pole<br>Ø | No. open<br>holes | No.knockouts holes<br>Ø20 mm | External Dim.<br>LxHxD (mm) | Pack<br>Carton |
|-----------|-------------|--------------|---------------|-------------------|------------------------------|-----------------------------|----------------|
| GW 27 056 | 3 gang      | Post head    | 54 - 60 mm    | 1                 |                              | 122 x 149 x 85              | 1/12           |
| GW 27 057 | 3 gang      | Post bracket | 54 - 76 mm    | 1                 | 1                            | 122 x 164 x 85              | 1/12           |

**ACCESSORIES SUPPLIED:** cable gland Pg 13,5.

**CHARACTERISTICS:** fitted for customization using self-adhesive labels h = 6 mm.

GW27057, complete with 2 holes for screw fixing and 2 slots for fixing with thermoplastic or metal cable ties up to 13 mm in height.

Full insulation achieved using GW44622 screwcaps.

## COMPLETE COMBI SYSTEM ENCLOSURES AND DEVICES

### PROTECTED ENCLOSURES COMPLETE WITH SYSTEM DEVICES



GW27801

#### PROTECTED ENCLOSURES COMPLETE WITH SYSTEM DEVICES COLOUR GREY RAL 7035 - IP40 - 250V~

| Code      | Description                   | Characteristics         | External Dim.<br>LxHxD (mm) | Pack<br>Carton |
|-----------|-------------------------------|-------------------------|-----------------------------|----------------|
| GW 27 801 | One-way switch 1P - 16 AX     |                         | 66 x 82 x 55                | 5/60           |
| GW 27 802 | One-way switch 2P - 16 AX     |                         | 66 x 82 x 55                | 5/60           |
| GW 27 803 | Two-way switch 1P - 16AX      |                         | 66 x 82 x 55                | 5/60           |
| GW 27 804 | 2 x Two-way switch 1P - 16 AX |                         | 66 x 82 x 55                | 5/60           |
| GW 27 805 | Push-button 1P NO 10A         |                         | 66 x 82 x 55                | 5/60           |
| GW 27 811 | S.-outlet 2P+E - 16A Dual amp | Italian standard        | 66 x 82 x 55                | 5/80           |
| GW 27 812 | S.-outlet 2P+E - 16A Dual amp | Italian/German standard | 66 x 82 x 55                | 5/80           |
| GW 27 814 | Socket-outlet 2P+E - 10/16A   | German standard         | 66 x 82 x 55                | 5/80           |
| GW 27 813 | Socket-outlet 2P+E - 13A      | British standard        | 66 x 82 x 55                | 5/80           |
| GW 27 815 | Socket-outlet 2P+E - 10/16A   | French standard         | 66 x 82 x 55                | 5/80           |

The international standard socket-outlets are for export.

**ACCESSORIES SUPPLIED:** cable gland for conduits with max external diameter 20 mm.

**CHARACTERISTICS:** fitted for customizing with self-adhesive labels h = 6 mm.

Total insulation can be obtained using screw caps GW44622.

### WATERTIGHT ENCLOSURES COMPLETE WITH SYSTEM DEVICES



GW27832

#### WATERTIGHT ENCLOSURES COMPLETE WITH SYSTEM DEVICES GREY RAL 7035 - IP55- 250V~

| Code      | Description                   | Characteristics         | External Dim.<br>LxHxD (mm) | Pack<br>Carton |
|-----------|-------------------------------|-------------------------|-----------------------------|----------------|
| GW 27 831 | One-way switch 1P - 16 AX     |                         | 66 x 82 x 65                | 5/60           |
| GW 27 832 | One-way switch 2P - 16 AX     |                         | 66 x 82 x 65                | 5/60           |
| GW 27 833 | Two-way switch 1P - 16AX      |                         | 66 x 82 x 65                | 5/60           |
| GW 27 834 | 2 x Two-way switch 1P - 16 AX |                         | 66 x 82 x 65                | 5/60           |
| GW 27 835 | Push-button 1P NO 10A         |                         | 66 x 82 x 65                | 5/60           |
| GW 27 836 | Push-button 1P NO 10A         | Illuminable name plate  | 99 x 82 x 65                | 2/40           |
| GW 27 841 | S.-outlet 2P+E - 16A Dual amp | Italian standard        | 66 x 82 x 65                | 5/60           |
| GW 27 842 | S.-outlet 2P+E - 16A Dual amp | Italian/German standard | 66 x 82 x 65                | 5/60           |

TO BE CONTINUED ON NEXT PAGE

# 27 COMBI RANGE

SURFACE-MOUNTING ENCLOSURES AND MODULAR COMPONENTS



(TO BE CONTINUED)

## WATERTIGHT ENCLOSURES COMPLETE WITH SYSTEM DEVICES GREY RAL 7035 - IP55- 250V~

| Code      | Description                   | Characteristics  | External Dim. LxHxD (mm) | Pack Carton |
|-----------|-------------------------------|------------------|--------------------------|-------------|
| GW 27 844 | Socket-outlet 2P + E - 10/16A | German standard  | 66 x 82 x 65             | 5/60        |
| GW 27 843 | Socket-outlet 2P+E - 13A      | British standard | 66 x 82 x 65             | 5/60        |
| GW 27 845 | Socket-outlet 2P+E - 10/16A   | French standard  | 66 x 82 x 65             | 5/60        |

The international standard socket-outlets are for export.

**ACCESSORIES SUPPLIED:** cable gland for conduits with max external diameter 20 mm.

**CHARACTERISTICS:** fitted for customizing with self-adhesive labels h = 6 mm. GW27836, supplied without lamp.

Use cartridge lamps S6x36 - 12/24V. Total insulation can be obtained using the screw caps GW44622; IP55 with door closed.

## COMPLETE DEVICES

27 COMBI RANGE



GW26222

## SURFACE-MOUNTING INDUSTRIAL SOCKET-OUTLETS TO IEC 309 STANDARD - COLOUR GREY RAL 7035 - IP44

| Code      | Rated current (A) | No. poles | Nominal voltage | Reference h | External Dim. LxHxD (mm) | Pack Carton |
|-----------|-------------------|-----------|-----------------|-------------|--------------------------|-------------|
| GW 26 222 | 16                | 2P+E      | 220 V           | 6           | 64 x 80 x 97             | 5/40        |
| GW 26 223 | 16                | 3P+E      | 380 V           | 6           | 64 x 80 x 97             | 5/40        |

Alternating current nominal voltage.

**ACCESSORIES SUPPLIED:** 1 cable gland Ø 23 mm.

**CHARACTERISTICS:** fitted for fixing the earth terminal GW26407.



GW27415

## INDICATOR LAMPS- MAX 15W - GREY RAL 7035 - IP55

| Code      | Diffusor colour | Nominal voltage | Lampholder type | External Dim. LxHxD (mm) | Pack Carton |
|-----------|-----------------|-----------------|-----------------|--------------------------|-------------|
| GW 27 415 | Red             | 230 V           | E14             | 66 x 82 x 95             | 5/40        |
| GW 27 416 | Green           | 230 V           | E14             | 66 x 82 x 95             | 5/40        |
| GW 27 417 | Yellow          | 230 V           | E14             | 66 x 82 x 95             | 5/40        |
| GW 27 418 | Transparent     | 230 V           | E14             | 66 x 82 x 95             | 5/40        |
| GW 27 419 | Blue            | 230 V           | E14             | 66 x 82 x 95             | 5/40        |

Alternating current nominal voltage. Supplied without lamp.

**ACCESSORIES SUPPLIED:** 1 cable gland Ø 23 mm.

**CHARACTERISTICS:** fitted for fixing the earth terminal GW26407.



GW27424

## ELECTRONIC FLASHLIGHTS- MAX 25W - GREY RAL 7035 - IP55 -

| Code      | Diffusor colour | Nominal voltage | Flash frequency | Lampholder type | External Dim. LxHxD (mm) | Pack Carton |
|-----------|-----------------|-----------------|-----------------|-----------------|--------------------------|-------------|
| GW 27 421 | Red             | 24 V            | 1 Hz            | E14             | 66 x 82 x 95             | 1/12        |
| GW 27 422 | Red             | 230 V           | 1 Hz            | E14             | 66 x 82 x 95             | 1/12        |
| GW 27 423 | Yellow          | 24 V            | 1 Hz            | E14             | 66 x 82 x 95             | 1/12        |
| GW 27 424 | Yellow          | 230 V           | 1 Hz            | E14             | 66 x 82 x 95             | 1/12        |

Supplied without lamp.

**ACCESSORIES SUPPLIED:** 1 cable gland Ø 23 mm.

**CHARACTERISTICS:** fitted for fixing the earth terminal GW26407.



GW26417

## BUZZERS FOR SIGNALLING - IP40

| Code      | Nominal voltage | Loudness       | Frequency impulses of sound | External Dim. LxHxD (mm) | Pack Carton |
|-----------|-----------------|----------------|-----------------------------|--------------------------|-------------|
| GW 26 417 | 24 V            | 70 dB (at 1 m) | 1 Hz                        | 64 x 80 x 59             | 1/12        |
| GW 26 427 | 230 V           | 70 dB (at 1 m) | 1 Hz                        | 64 x 80 x 59             | 1/12        |

**ACCESSORIES SUPPLIED** 1 cable gland Ø 23 mm.

**CHARACTERISTICS:** fitted for fixing the earth terminal GW26407.



GW26418

## DIRECTIONAL INFRARED MOVEMENT DETECTOR WITH PHOTOCELL THRESHOLD- 230V - 50/60HZ - IP54

| Code      | Range of action | Duration adjustment | Photocell threshold adjust. | Relay output        | External Dim. LxHxD (mm) | Pack Carton |
|-----------|-----------------|---------------------|-----------------------------|---------------------|--------------------------|-------------|
| GW 26 418 | 12 m            | 10 - 300 sec.       | 5 - 50 lux                  | 1NO 3A(AC1) 250 V ~ | 64 x 80 x 88             | 1/10        |

**ACCESSORIES SUPPLIED** 1 cable gland Ø 23 mm.

**CHARACTERISTICS:** fitted for fixing the earth terminal GW26407.

**NOTE:** do not use to control fluorescent loads directly.

# 27 COMBI RANGE

SURFACE-MOUNTING ENCLOSURES AND MODULAR COMPONENTS



GW26419



## LIGHT SENSITIVE DETECTOR WITH RELAY OUTPUT - 230V - 50HZ - IP55

| Code      | Adjustment of photocell | Output contacts                | External Dim. LxHxD (mm) | Pack Carton |
|-----------|-------------------------|--------------------------------|--------------------------|-------------|
| GW 26 419 | 1-100 lux               | 1 NO-10A(AC1)/5A(AC15)-250 V ~ | 64 x 80 x 59             | 1/12        |

Total insulation can be obtained using screw caps GW44622.

**ACCESSORIES SUPPLIED:** 1 cable gland Ø 23 mm.

**CHARACTERISTICS:** fitted for fixing the earth terminal GW26407.

## SPECIAL ENCLOSURES

### COMBI-DIN - PROTECTED DIN-SYSTEM COMBINED ENCLOSURES

GW27071



#### PROTECTED ENCLOSURES FOR COMBINED INSTALLATION OF MODULAR DEVICES

#### EN 50022 AND SYSTEM - SMOKE TRANSPARENT DOOR - COLOUR GREY RAL 7035 - IP40

| Code      | No. EN 50022 modules | No. System modules | Configuration | Dispersible power (W) | No. knockout holes Ø 23 | External Dim. LxHxD (mm) | Pack Carton |
|-----------|----------------------|--------------------|---------------|-----------------------|-------------------------|--------------------------|-------------|
| GW 27 071 | 2                    | 4                  | Module 2 x 2  | 13                    | 10                      | 132 x 132 x 95           | 1/8         |
| GW 27 072 | 4                    | 8                  | Module 2 x 4  | 15                    | 12                      | 231 x 132 x 95           | 1/6         |
| GW 27 073 | 8                    | 16                 | Module 4 x 4  | 18                    | 18                      | 429 x 132 x 95           | 1/4         |

**NOTES:** dispersible power calculated according to CEI 23-49.

**ACCESSORIES SUPPLIED:** cable gland for conduits of max external diameter 20 mm.

**CHARACTERISTICS:** fitted for customization using self-adhesive labels h = 6 mm.

Fitted for the fixing of earth terminal GW26407. GW27072 - GW27073 internal compartments divisible vertically using special functional dividers. Full insulation achieved using GW44622 screwcaps.

27 COMBI RANGE

### COMBI-IN - FLUSH-MOUNTING FLANGED COMPONENTS

GW27401



#### SYSTEM 2-GANG WEATHERPROOF COVER FOR APPLICATIONS ON Q-DIN

#### DISTRIBUTION BOARDS, PTC JUNCTION BOXES, 66 AND Q-BOX RANGE

#### FLANGED LIDS AND PANELS - COLOUR GREY RAL 7035 - IP55

| Code      | No. System modules | Dimension BxH (mm) | Pack Carton |
|-----------|--------------------|--------------------|-------------|
| GW 27 401 | 2                  | 85 x 75            | 3/60        |

**ACCESSORIES SUPPLIED:** 4 self-tapping screws. IP55 with door closed.

GW26420



#### INDUSTRIAL SOCKET OUTLETS CONFORMING TO IEC 309 STANDARD COLOUR - GREY RAL 7035 - IP44,

#### FOR INSTALLATION ON FLUSH-MOUNTING RECTANGULAR BOX GW24203/GW24303

| Code      | Rated current (A) | No. poles | Nominal voltage | Reference h | External Dim. LxHxD (mm) | Pack Carton |
|-----------|-------------------|-----------|-----------------|-------------|--------------------------|-------------|
| GW 26 420 | 16                | 2P+E      | 220 V           | 6           | 116 x 90 x 45            | 1/20        |
| GW 26 421 | 16                | 3P+E      | 380 V           | 6           | 116 x 90 x 45            | 1/20        |

### COMBI 22 - ENCLOSURES FOR PUSH BUTTONS, CONTROLS AND INDICATORS Ø 22 MM

GW27101



#### UNWIRED ENCLOSURES FOR PUSH-BUTTONS, CONTROLS AND INDICATORS Ø 22 MM - GREY RAL 7035 - IP66

| Code      | No. gang | Side entries | Top entries | Bottom entries | External Dim. LxHxD (mm) | Pack Carton |
|-----------|----------|--------------|-------------|----------------|--------------------------|-------------|
| GW 27 101 | 1        | 2 x Ø 23     | 1 x Ø 23    | 1 x Ø 23       | 66 x 82 x 65             | 5/60        |
| GW 27 111 | 1        | 2 x Ø 23     | 1 x Ø 23    | 1 x Ø 23       | 66 x 82 x 65             | 5/60        |
| GW 27 102 | 2        | 6 x Ø 23     | 1 x Ø 23    | 1 x Ø 23       | 132 x 82 x 65            | 2/30        |
| GW 27 103 | 3        | 4 x Ø 23     | 1 x Ø 23    | 1 x Ø 23       | 66 x 171 x 65            | 1/20        |
| GW 27 104 | 6        | 4 x Ø 23     | 3 x Ø 23    | 3 x Ø 23       | 132 x 171 x 65           | 1/10        |
| GW 27 105 | 12       | 4 x Ø 23     | 3 x Ø 23    | 3 x Ø 23       | 264 x 171 x 65           | 1/10        |

**CHARACTERISTICS:** protection rating ensured with IP66 covers correctly installed. Seat of hole with pre-cutting that enables installing operators with any reference, GW27111 specific for the mounting of emergency push-buttons GW74061 - GW74062 - GW74063; yellow lid.

GW27201



#### ENCLOSURES COMPLETE WITH OPERATOR - GREY RAL 7035 - IP66

| Code      | No. gang | Contacts  | Operators Ø 22                             | External Dim. LxHxD (mm) | Pack Carton |
|-----------|----------|-----------|--|--------------------------|-------------|
| GW 27 201 | 1        | 1 NO      | General (black)                            | 66 x 82 x 65             | 1/30        |
| GW 27 202 | 1        | 1 NO 1 NC | Emergency (red)                            | 66 x 82 x 65             | 1/30        |
| GW 27 203 | 2        | 1 NO 1 NC | Start (green) Stop (red)                   | 132 x 82 x 65            | 1/10        |
| GW 27 204 | 3        | 1 NC 1 NO | Stop (red) Start (green) Indicator (white) | 66 x 171 x 65            | 1/10        |

Maximum protrusion of operator from the enclosure: GW27201, GW20203, GW27204: 20mm. / GW27202: 25 mm.

**CHARACTERISTICS:** contact-holder flange with 3 seats. GW27202, yellow lid, mushroom-head button with retainer.

GW27204, direct supply, BA95 coupling included max. 380 V - 2 W, bulb not included. Complete insulation to IEC536 standards.

TECHNICAL CHARACTERISTICS FROM PAGE 284

## COMPLEMENTARY ITEMS

### COMPLEMENTARY ITEMS

GW27402



| JUNCTION BOX FOR COMBINATION MOUNTING OF MODULAR ENCLOSURES - COLOUR GREY RAL 7035 - IP55 |                              |                             |                             |                |
|---|------------------------------|-----------------------------|-----------------------------|----------------|
| Code  | No. knockout holes<br>Ø23    | Lid screws<br>(number/type) | External Dim.<br>LxHxD (mm) | Pack<br>Carton |
| GW 27 402   | 8 on sides / 1 on the bottom | 4 - Stainless steel         | 132 x 82 x 55               | 2/60           |

Complete insulation can be achieved with the use of GW44622 screwcaps.

27 COMBI RANGE

GW26406



| WATERPROOF COUPLER FOR ENCLOSURES, DEVICES AND BOXES - IP55 |                              |                          |                |
|---|------------------------------|--------------------------|----------------|
| Code  | For holes<br>mounting Ø (mm) | For mounting<br>PG holes | Pack<br>Carton |
| GW 26 406   | 23                           | 16                       | 25/250         |

GW27441

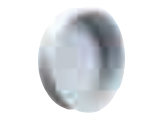


| INSULATING FUNCTIONAL DIVIDERS FOR MODULAR SURFACE-MOUNTING ENCLOSURES |                |         |         |                |         |         |        |
|--|----------------|---------|---------|----------------|---------|---------|--------|
| Code   | For enclosures |         |         | Pack<br>Carton |         |         |        |
| GW 27 441  | GW27005        | GW27006 | GW27007 | GW27008        | GW27022 | 10/100  |        |
| GW 27 442  | GW27023        | GW27024 | GW27051 | GW27052        | GW27072 | GW27073 | 10/100 |

**APPLICATIONS:** circuits with different voltages / Energy-signal division / Division of special circuits.

| FUNCTIONAL DIVIDERS IN METAL FOR MODULAR CONTAINERS FOR WALL-MOUNTING |                |         |                |        |
|---|----------------|---------|----------------|--------|
| Code  | For enclosures |         | Pack<br>Carton |        |
| GW 27 443   | GW27024        | GW27627 | GW27628        | 10/100 |

GW44622



| INSULATING SCREW CAP |                 |                |
|----------------------|-----------------|----------------|
| Code                 | Description     | Pack<br>Carton |
| GW 44 622            | Screwcap Ø16 mm | 10/100         |

GW26407



| BRASS TERMINAL FOR THROUGH-LINE EARTH CONDUCTOR |                               |          |                |
|---|-------------------------------|----------|----------------|
| Code  | Section<br>(mm <sup>2</sup> ) | Fixing   | Pack<br>Carton |
| GW 26 407                                       | 4                             | Pressure | 200/1600       |

NEW

TECHNICAL CHARACTERISTICS FROM PAGE 284