

TECHNICAL CHARACTERISTICS

COMPLIANCE WITH STANDARDS

EN 60598-1

EN 60598-2-3

MATERIALS AND FINISHINGS

Pole fixing base:	die-cast aluminium
Corrosion-proof treatment:	"ALODINE 1200" chromate treatment
Painting:	Polyester grey RAL 7035
Covering:	reinforced polypropylene grey RAL 7035
Impact resistance:	19 J
Glow Wire Test:	650°C
Glass support frame:	Fibreglass-reinforced polyamide smoke grey
Dish:	aluminium 99.85 polished and anodized
Dehumidifier filter:	felt
Shield:	transparent polycarbonate bowl stabilised to U.V.rays
Impact resistance:	19 J
Glow Wire Test:	850°C
Glass:	tempered flat
Impact resistance:	8 J
Seals:	silicone
External nuts and bolts:	stainless steel

WIRING

Supply unit:	on a polyamide plate
Lampholder:	ceramic
Cables:	flexible, silicone insulated and glass fibre braid
Supply knife switch:	two-pole
Cos φ:	≥ 0.9

ACCESSORIES SUPPLIED

Coupling for fixed/adjustable pole:	steel
Packaging:	corrugated cardboard

TYPE OF INSTALLATION

on straight pole:	Ø 60 ÷ 76 mm, inclination 10°
on pole with arm:	Ø 42 ÷ 60 mm
on straight pole:	Ø 60 mm, angle with swivel bracket from 10° to 20°
on arm:	angle with swivel bracket from 0° to 10°

BEHAVIOUR WITH CHEMICAL AND CORROSIVE AGENTS*

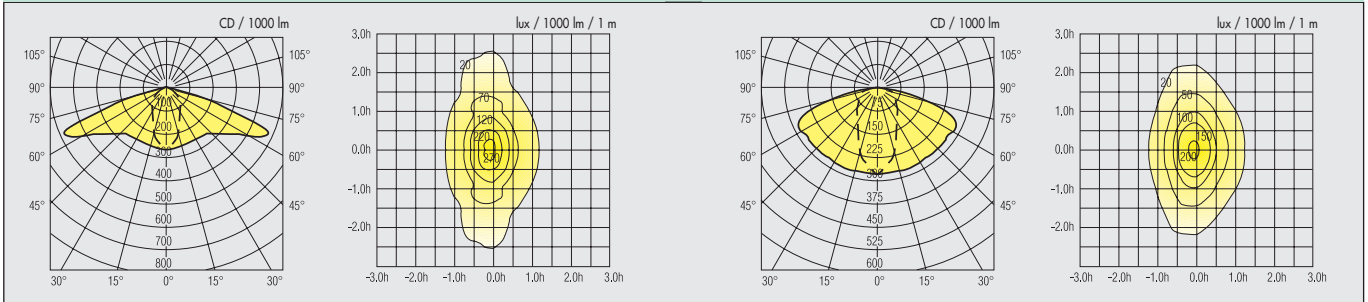
Water	Sea air	Acids	Bases	Ketones	Spirits	Silicone oil	Oils/Greases	Petrol
Resistant	Resistant	Limited resistance	Resistant	Resistant	Resistant	Resistant	Resistant	Resistant

For behaviour with other chemical agents, see the section "General technical information".

PHOTOMETRIC CURVES

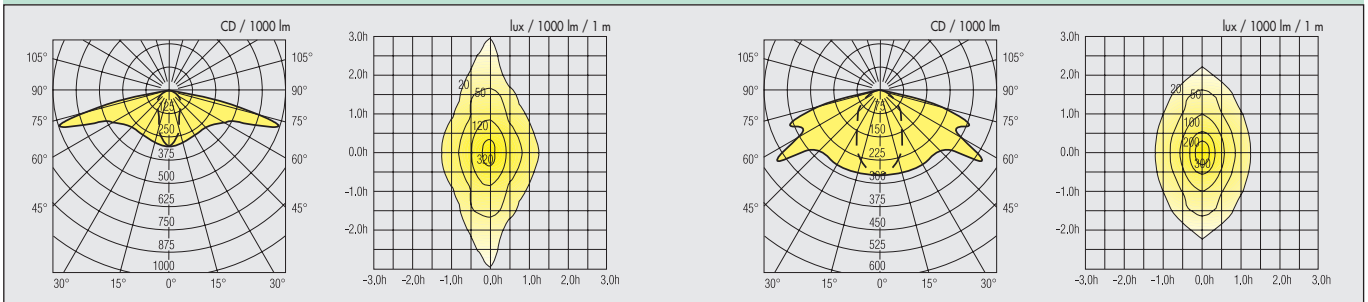
INDY 150W ST - SEMI CUT-OFF OPTICS DIM. 670X290X255 MM

INDY 250W QE - SEMI CUT-OFF OPTICS DIM. 760X350X325 MM



INDY 250W ST - SEMI CUT-OFF OPTICS DIM. 760X350X325 MM

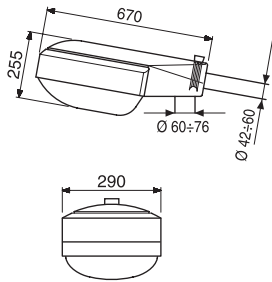
INDY 400W ST - CUT-OFF OPTICS DIM. 760X350X215 MM



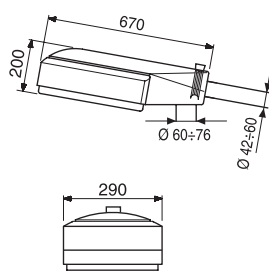
DIMENSION TABLES

INDY 1

Surface exposed to the wind: 0.16 m²

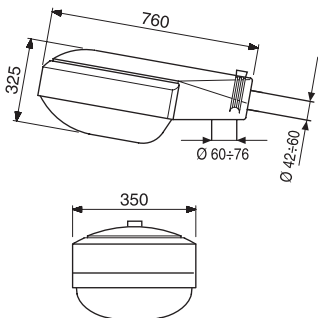


Surface exposed to the wind: 0.12 m²

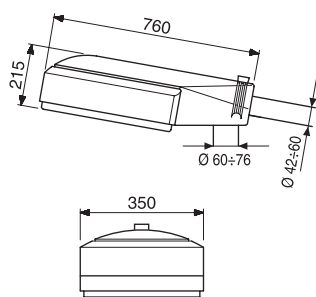


INDY 2

Surface exposed to the wind: 0.22 m²

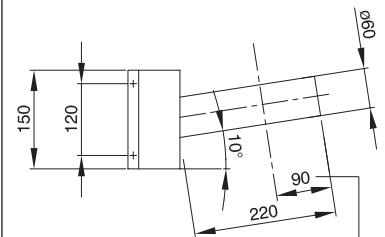


Surface exposed to the wind: 0.18 m²



COMPLEMENTARY ITEMS

FIXING BRACKET



Insertion dimension
INDY 1 = INDY 2

