

ARCOBALENO SELF-EXTINGUISHING FLEXIBLE CONDUITS

MEDIUM SIZE FLEXIBLE CONDUIT FK 15

Name: FK15	Permanent application and installation temperature: -5°C/+60°C
Colour: medium white, black, green, light blue, brown, lilac	Insulation resistance: > 100 MΩ at 500 V for 1 minute
Material: PVC	Dielectric rigidity: > 2000 V at 50 Hz for 15 minutes
Length supplied: depends on the diameter	Resistance to flame propagation: self-extinguishing in less than 30 seconds
Standards: EN 50086-1 (CEI 23-39), EN 50086-2-2 (CEI 23-55) and IEC EN 61386-1; IEC EN 61386-22	Application field: electrical systems and/or data transmission for all types of environment
Classification: 3321	Installation type mainly flush-mounted in floors, walls and/or ceilings.
Compression strength: 750 N	Suitable for applications inside false ceilings and floating floors.
Impact resistance: 2 kg of 100 mm (2 J)	

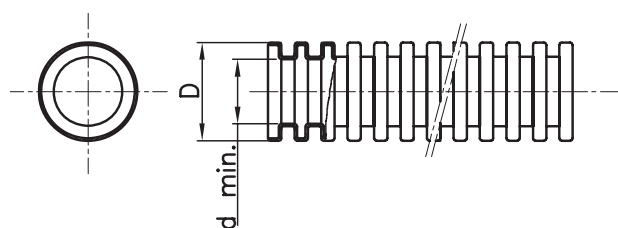
SELF-RECOVERING - SELF-EXTINGUISHING HALOGEN-FREE CONDUIT

ICTA MEDIUM SIZE FLEXIBLE CONDUIT

Name: ICTA	Permanent application and installation temperature: -5°C/+90°C
Colour: RAL 7035 grey - dark grey	Insulation resistance: > 100 MΩ at 500 V for 1 minute
Material: halogen-free self-extinguishing polypropylene in compliance within 50267-2-2 Standard	Dielectric rigidity: > 2000 V at 50 Hz for 15 minutes
Length supplied: depends on the diameter	Resistance to flame propagation: self-extinguishing in less than 30 sec.
Standards: EN 50086-1 (CEI 23-39), EN 50086-2-2 (CEI 23-55) and IEC EN 61386-1; IEC EN 61386-22	Application field: electrical systems and/or data transmission for all types of environment Particularly suitable for installations in public places: schools, cinemas, theatres, undergrounds, etc.
Classification: 3422	Installation type: mainly flush-mounted in floors, walls and ceilings buried in concrete. Suitable for applications inside false ceilings and floating floors.
Compression strength: 750 N	
Impact resistance: 2 kg of 300 mm (6 J)	

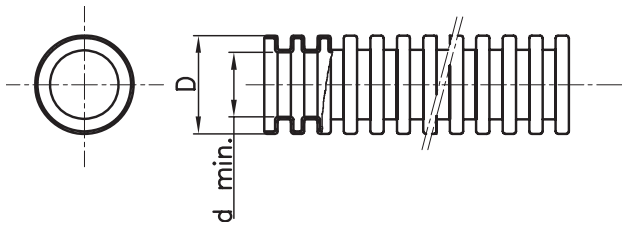
DIMENSIONAL TABLES

FK 15 - ARCOBALENO MEDIUM SIZE FLEXIBLE CONDUIT



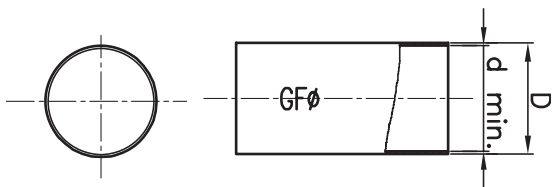
WITHOUT CABLE PULLER	WITH CABLE PULLER	WITHOUT CABLE PULLER	WITH CABLE PULLER	WITHOUT CABLE PULLER	WITH CABLE PULLER	WITHOUT CABLE PULLER	WITH CABLE PULLER	WITHOUT CABLE PULLER	WITH CABLE PULLER	WITHOUT CABLE PULLER	WITH CABLE PULLER	CONDUITS Ø (mm)	D	d. min.	
MEDIUM WHITE CODE	BLACK CODE	GREEN CODE	LIGHT BLUE CODE	BROWN CODE	LILAC CODE										
DX 16 216	DX 16 316	DX 15 016	DX 15 116	DX 15 216	DX 15 316	DX 15 416	DX 15 516	DX 15 616	DX 15 716	DX 15 816	DX 15 916	16	16	0 -0.3	10.7
DX 16 220	DX 16 320	DX 15 020	DX 15 120	DX 15 220	DX 15 320	DX 15 420	DX 15 520	DX 15 620	DX 15 720	DX 15 820	DX 15 920	20	20	0 -0.3	14.1
DX 16 225	DX 16 325	DX 15 025	DX 15 125	DX 15 225	DX 15 325	DX 15 425	DX 15 525	DX 15 625	DX 15 725	DX 15 825	DX 15 925	25	25	0 -0.4	18.3
DX 16 232	DX 16 332	DX 15 032	DX 15 132	DX 15 232	DX 15 332	DX 15 432	DX 15 532	DX 15 632	DX 15 732	DX 15 832	DX 15 932	32	32	0 -0.4	24.3
DX 16 240	DX 16 340	DX 15 040	DX 15 140	DX 15 240	DX 15 340	DX 15 440	DX 15 540	DX 15 640	DX 15 740	DX 15 840	DX 15 940	40	40	0 -0.4	31.2
DX 16 250	DX 16 350	DX 15 050	DX 15 150	DX 15 250	DX 15 350	DX 15 450	DX 15 550	DX 15 650	DX 15 750	DX 15 850	DX 15 950	50	50	0 -0.5	39.6
DX 16 263	DX 16 363	DX 15 063	DX 15 163									63	63	0 -0.6	50.6

ICTA - SELF-RECOVERING SELF-EXTINGUISHING HALOGEN FREE MEDIUM SIZE CONDUIT



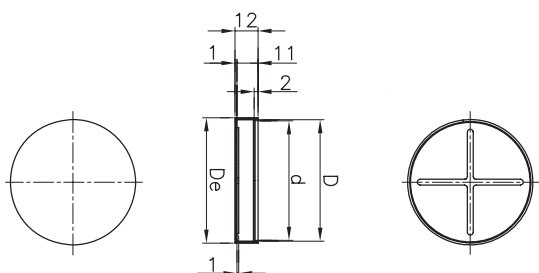
RAL 7035 GREY		DARK GREY		CONDUITS Ø (mm)	D	d min.
WITH CABLE PULLER	WITHOUT CABLE PULLER	WITH CABLE PULLER	WITHOUT CABLE PULLER			
CODE	CODE	CODE	CODE			
DX 20 016	DX 20 116	DX 20 416	DX 20 516	16	16	0 -0.3
DX 20 020	DX 20 120	DX 20 420	DX 20 520	20	20	0 -0.3
DX 20 025	DX 20 125	DX 20 425	DX 20 525	25	25	0 -0.4
DX 20 032	DX 20 132	DX 20 432	DX 20 532	32	32	0 -0.4
DX 20 040	DX 20 140	DX 20 440	DX 20 540	40	40	0 -0.4
DX 20 050	DX 20 150	DX 20 450	DX 20 550	50	50	0 -0.5
DX 20 063	DX 20 163	DX 20 463	DX 20 563	63	63	0 -0.6

GF - FLEXIBLE CONDUIT COUPLING



CODE	FOR CONDUITS Ø (mm)	D	d min.
DX 52 016	16	17.9	15.9
DX 52 020	20	21.9	19.9
DX 52 025	25	26.8	24.8
DX 52 032	32	33.8	31.8
DX 52 040	40	41.8	39.8
DX 52 050	50	51.8	49.8
DX 52 063	63	64.7	62.7

TF - FLEXIBLE CONDUIT COVER



CODE	FOR CONDUITS Ø (mm)	D	De	d.
DX 52 116	16	16	18	15
DX 52 120	20	20	22	19
DX 52 125	25	25	27	24
DX 52 132	32	32	34	31
DX 52 140	40	40	42	39
DX 52 150	50	50	52	49
DX 52 163	63	63	65	62