

TECHNICAL CHARACTERISTICS

44 ME - SINGLE-POLE EQUIPOTENTIAL TERMINAL BLOCKS

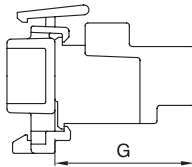
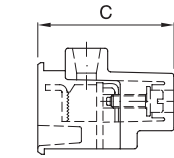
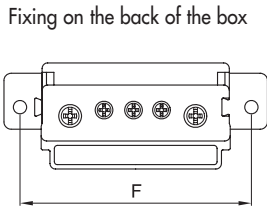
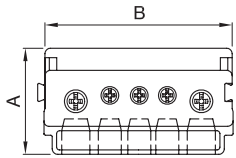
TECHNICAL CHARACTERISTICS

Standard: EN 60998-1; EN 60998-2-1;
 Insulating voltage: 450 V
 IP rating: IP 20
 Protection against direct contacts: IP XXB

Resistance to abnormal heat and fire: thermo-pressure with ball 125°C
 Glow wire test 850°C
 Maximum operating temperature: 85°C

DIMENSIONAL TABLES

EQUIPOTENTIAL TERMINAL BLOCKS



CODE	DIMENSIONS			CONDUCTOR HOUSINGS				FIXING		
	A	B	C	NO.	AND SEC	NO.	D SEC	F	G	
3 X 6	GW 44 671	26	24	28	3	6	-	-	38	34.5
5 X 6	GW 44 672	26	35	28	5	6	-	-	49	34.5
4 X 16	GW 44 673	29	51.5	35.5	4	16	-	-	65.5	42
2 X 16 3 X 6	GW 44 674	29	51.5	35.5	3	6	2	16	65.5	42
2 X 16 9 X 6	GW 44 675	29	98	36.5	9	6	2	16	112	43
2 X 35 4 X 16	GW 44 676	39	94.5	54	4	16	2	35	108.5	-

44 MP - MODULAR DIVIDING TERMINAL BLOCKS

TECHNICAL CHARACTERISTICS

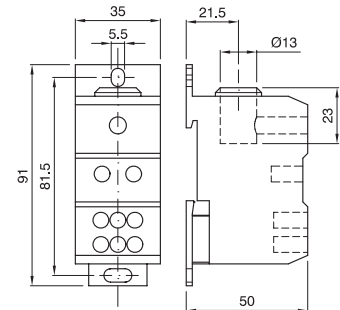
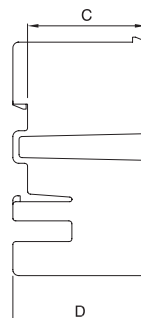
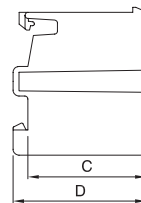
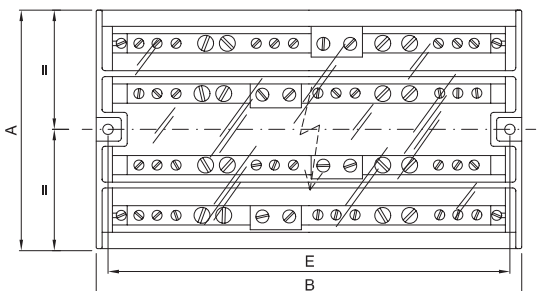
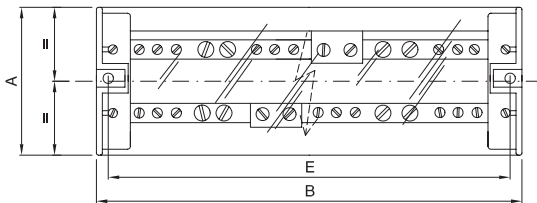
Standard: EN 60998-1; EN 60998-2-1;
 Impulse voltage: 4 kV
 Insulating voltage: 500 V
 Protection against direct contacts: IP XXA
 Resistance to abnormal heat and fire: thermo-pressure with ball 125°C
 Glow wire test 850°C

Maximum operating temperature: 40°C

Nominal current (A)	I _{cw} (kA)	Peak current I _{pk} (kA)
100	3.1	20
125	4.2	18
160	6.2 (1 pole)	30 (1 pole) - 24 (4 pole)

DIMENSIONAL TABLES

MODULAR DIVIDING TERMINAL BLOCKS



GW 44 651

NO. OF POLES	CODE	A	B	C	D	E
2P	GW 44 691	50	72	44	49	64
	GW 44 693	50	144	44	49	136
	GW 44 696	81	72	44	49	64
4P	GW 44 698	81	144	44	49	136
	GW 44 699	90	160	44	49	145