

TECHNICAL CHARACTERISTICS

48 CM - LARGE-CAPACITY CONNECTION AND JUNCTION BOXES

TECHNICAL CHARACTERISTICS

Standard: IEC 60670-1; IEC 60670-22; CEI 23-48	Material: GW PLAST
IP rating: IP 40; IP 44	Impact resistance: IK 07 (box IP 40) IK 10 (cover IP 44)
Protection against indirect contacts: Double insulation \square (●)	Resistance to abnormal heat and fire: Thermo-pressure with ball 70°C Glow wire test 650°C
Installation temperature: Max +60° Min -25°	

(●) Full insulation in compliance with EN 61140 standard.

BEHAVIOUR WITH CHEMICAL AND ATMOSPHERIC AGENTS

Saline solution	Acids		Bases		Solvents				Mineral oil	UV rays
	Concentrated	Diluted	Concentrated	Diluted	Esane	Benzol	Acetone	Ethyl alcohol		
Resistant	Not resistant	Not resistant	Limited resistance	Not resistant	Not resistant	Not resistant	Not resistant	Limited resistance	Limited resistance	Limited resistance

DIMENSIONAL TABLES

	BOX			SHALLOW COVER			DEEP COVER			
	A	B	C	D	E	F	D'	E'	G	H
2 compartments	260	260	121.5	280	280	7	286	286	67	74
5 compartments	520	260	121.5	540	280	7	547	286	67	74

48 RANGE

FLUSH-MOUNTING JUNCTION BOXES AND MODULAR RANGE BOXES



TECHNICAL CHARACTERISTICS

48 PT - CONNECTION AND JUNCTION BOXES

TECHNICAL CHARACTERISTICS

Standard: IEC 60670-1; IEC 60670-22; CEI 23-48	Material: GW PLAST
Protection rating: IP 40	Impact resistance: IK 07 (deep, standard and plasterboard walls cover)
Protection against indirect contacts: double insulation □ (●)	IK 10 (impact resistant cover)
Installation temperature: Max +60°C; Min -15°C	Glow wire test 650°C (standard, deep and impact resistant cover)
Resistance to abnormal heat and fire: thermo-pressure with ball 70°C	850°C (for plasterboard wall boxes)

(●) Full insulation in compliance with EN 61140 Standard.

BEHAVIOUR WITH CHEMICAL AND ATMOSPHERIC AGENTS

Agent	Saline solution	Acids		Bases		Solvents				Mineral oil	UV rays
		Concentrated	Diluted state	Concentrated	Diluted	Esane	Benzol	Acetone	Ethyl alcohol		
48 PT cover standard	Resistant	Not resistant	Resistant	Resistant	Resistant	Limited resistance	Not resistant	Not resistant	Limited resistance	Limited resistance	Limited resistance
48 PT - impact resistant cover suitable for plasterboard walls	Resistant	Not resistant	Limited resistance	Limited resistance	Not resistant	Limited resistance	Not resistant	Not resistant	Resistant	Limited resistance	Limited resistance

DIMENSIONAL TABLES

CODE	BOX				SHALLOW COVER			DEEP COVER			
	A	B	C	X	D	E	F	D'	E'	G	H
GW 48 001	92	92	45	30	106	106	48.5	-	-	-	-
GW 48 002	118	96	50	36	132	110	53.5	-	-	-	-
GW 48 003	118	96	70	50	132	110	73.5	-	-	-	-
GW 48 004	152	98	70	50	166	112	73.5	170	116	49	56
GW 48 084											
GW 48 005	160	130	70	50	174	144	74	178	148	49	56
GW 48 085											
GW 48 006	196	152	70	50	210	166	74.5	214	170	49	56
GW 48 086											
GW 48 007	294	152	70	50	308	166	74.5	312	170	66	73
GW 48 087											
GW 48 008	392	152	70	50	406	166	75	410	170	66	73
GW 48 088											
GW 48 009	480	160	70	50	498	176	75.6	-	-	-	-
GW 48 010	516	202	80	54	534	220	86	-	-	-	-
GW 48 011	516	294	80	56	534	311	86	-	-	-	-

TECHNICAL CHARACTERISTICS

48 PTC - MODULAR BOXES FOR JUNCTION CONTROL AND DISTRIBUTION

TECHNICAL CHARACTERISTICS

Standard: IEC 60670-1; IEC 60670-22; CEI 23-48	Material: GW PLAST
Protection rating: IP 40; IP 55	Impact resistance: IK 07 (box);
Protection against indirect contacts: double insulation <input type="checkbox"/> (*)	IK 08 (sealed enclosure and modular board)
Installation temperature: Max +60°C; Min -15°C	Resistance to abnormal heat and fire: thermo-pressure with ball 70°C Glow wire test 650°C

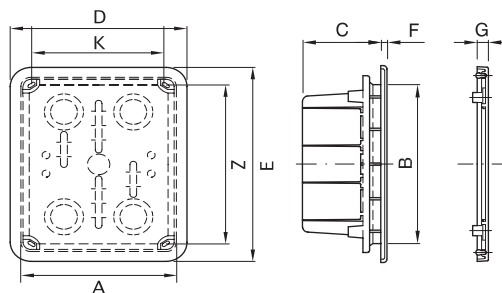
(*) Full insulation in compliance with EN 61140 Standard.

BEHAVIOUR WITH CHEMICAL AND ATMOSPHERIC AGENTS

Saline solution	Acids		Bases		Solvents				Mineral oil	UV rays
	Concentrated	Diluted	Concentrated	Diluted	Esane	Benzol	Acetone	Ethyl alcohol		
Resistant	Not resistant	Limited resistance	Limited resistance	Not resistant	Not resistant	Not resistant	Not resistant	Limited resistance	Limited resistance	Limited resistance

DIMENSIONAL TABLES

FLUSH-MOUNTING MODULAR SYSTEM



CODE	BOX			COVERS					
	A	B	C	D	E	F	G	Z	K
GW 48 661	138	169	70					154	120
GW 48 662	308	169	70					154	145
GW 48 663	398	169	70					154	125
GW 48 611				175	210	5.5		154	120
GW 48 612				345	210	5.5		154	145
GW 48 613				435	210	5.5		154	125
GW 48 621				175	210	-	9	154	120
GW 48 622				345	210	-	9	154	145
GW 48 623				435	210	-	9	154	125

TECHNICAL CHARACTERISTICS

24 - FLUSH-MOUNTING BOXES FOR BRICK WALLS

TECHNICAL CHARACTERISTICS

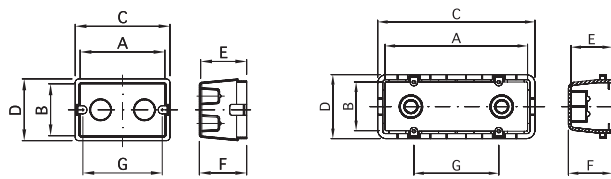
Standard: IEC 60670-1; IEC 60670-22; CEI 23-48	Material: GW PLAST
Protection rating: IP 40	Impact resistance: IK 07 (IP 40 Box)
Protection against indirect contacts: double insulation \square (●)	Resistance to abnormal heat and fire: Thermo-pressure with ball 70°C
Installation temperature: Max +60°C; Min -15°C	Glow wire test 650°C

(●) Full insulation in compliance with EN 61140 standard.

BEHAVIOUR WITH CHEMICAL AND ATMOSPHERIC AGENTS

Saline solution	Acids		Bases		Solvents				Mineral oil	UV rays
	Concentrated	Diluted state	Concentrated	Diluted state	Esane	Benzol	Acetone	Ethyl alcohol		
Resistant	Limited resistance	Resistant	Resistant	Resistant	Limited resistance	Not resistant	Not resistant	Resistant	Limited resistance	Limited resistance

DIMENSIONAL TABLES

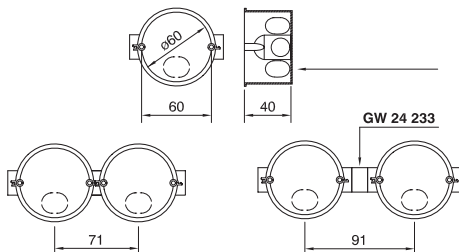


3 GANGS GW 24 203 - GW 24 204 - GW 24 303
4 GANGS GW 24 205 - GW 24 304

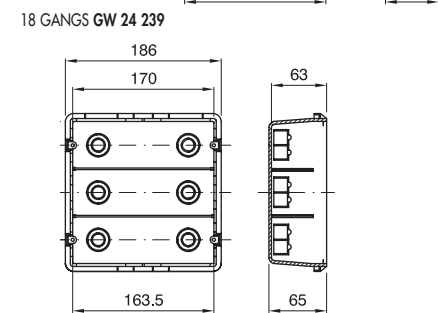
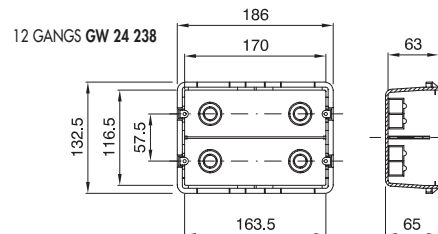
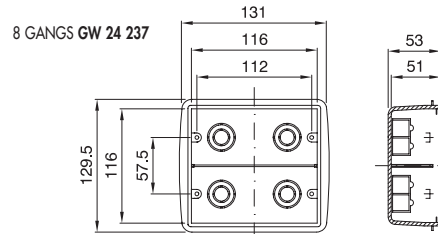
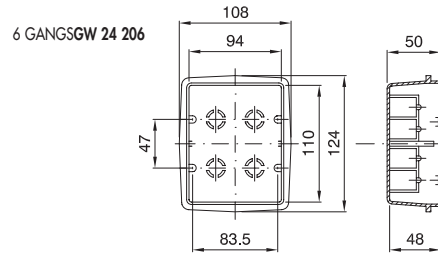
6 GANGS GW 24 236 - GW 24 306

CODE	GW 24 203	GW 24 204	GW 24 303	GW 24 205	GW 24 304	GW 24 236	GW 24 306
	3 GANGS	3 GANGS	3 GANGS DOMOBOX	4 GANGS	4 GANGS DOMOBOX	6 GANGS	6 GANGS DOMOBOX
A	94.5	94	96	118	121	170	171
B	58	58	58	58	58	60	60
C	104	104	119	128	144	186	194
D	68	66	80	68	85	76	90
E	49	47	49	49	49	51	49
F	50.5	48	50.5	50.5	50.5	53	50.5
G	83.5	83.5	83.5	108.5	108.5	100	100

ROUND GW 24 232



SQUARE GW 24 231



TECHNICAL CHARACTERISTICS

24 - FLUSH-MOUNTED BOXES FOR THIN CAVITY-WALLS MODULAR RANGE

TECHNICAL CHARACTERISTICS

Standard: IEC 60670-1 type Ha; IEC 60670-22; CEI 23-48

Material: GW PLAST

Protection class: IP 40

Impact resistance: IK 07 (IP 40 Box)

Indirect contact protection: double insulation (●)

Resistance to abnormal heat and fire: Thermo-pressure with ball 70°C

Installation temperature: Max +60°C; Min -15°C

Glow wire test 850°C

(●) Full insulation in compliance with EN 61140 Standard.

BEHAVIOUR WITH CHEMICAL AND ATMOSPHERIC AGENTS

Saline solution	Acids		Bases		Solvents				Mineral oil	UV rays
	Concentrated	Diluted	Concentrated	Diluted	Esane	Benzol	Acetone	Ethyl alcohol		
Resistant	Not resistant	Not resistant	Limited resistance	Not resistant	Not resistant	Not resistant	Not resistant	Resistant	Limited resistance	Limited resistance

DIMENSIONAL TABLES

CODE	GW 24 207 3 GANGS	GW 24 245 4 GANGS	GW 24 246 6 GANGS
A	130.5	156	93
B	110	137	72
C	83.5	108.5	60
D	64	66	185
E	62	62	170
F	46	71	-
G	-	-	100