

TECHNICAL CHARACTERISTICS

GENERAL CHARACTERISTICS

Monobloc range of devices for domestic and similar uses installable in square and round Ø 60 mm flush-mounting boxes.

TECHNICAL DATA AND REFERENCE STANDARDS

Component	Reference standards	Essential electrical data*			Prolonged operation (No. position changes)	Resistance to abnormal heat and fire	
		Breaking capacity at test voltage (V)	Insulation resistance (M)	Breaking capacity or class of use		Thermo-pressure with ball (°C)	Glow Wire Test (°C)
Commands	EN 60669-1 - IEC 60669-1	2000 at 50 Hz for 1 minute	> 5	1.25 In (200 position changes)	40.000 at In 250V- cosφ= 0.6	125	850
Socket-outlets Italian standard	CEI 23-50 - IEC 60884-1			1.25 In (100 position changes)	10.000 at In 250V- cosφ= 0.8		
Socket-outlets International standard	IEC 60884-1			1.25 In (100 position changes)	10.000 at In 250V- cosφ= 0.8		
Plates	EN 60669-1 - IEC 60669-1	-	-	-	-	75	650

BEHAVIOUR WITH CHEMICAL AND ATMOSPHERIC AGENTS

Agent	HO	Saline solution	Acids		Bases		Solvents				Mineral oil	UV rays
			Concentrated	Diluted	Concentrated	Diluted	Hexane	Benzol	Acetone	Ethyl alcohol		
Plates	Resistant	Resistant	Limited resistance	Resistant	Resistant	Resistant	Limited resistance	Not resistant	Not resistant	Not resistant	Limited resistance	Resistant
Devices	Resistant	Limited resistance	Not resistant	Limited resistance	Limited resistance	Resistant	Resistant	Resistant	Resistant	Resistant	Not resistant	Resistant

* The resistances given are valid for an ambient temperature not higher than 40 °C

Terminal grip on pulling of cables: > 50N

Max. expandability of fixing clamps 68 mm.

For the protection rating of the assembly installed, see the General Technical Information pages.

TERMINAL TIGHTENING CAPACITY

Flexible wires		Stiff wires	
Minimum 0.75 mm ²	Maximum 2 x 4 mm ²	Minimum 0.5 mm ²	Maximum 2x2.5 mm ²

THE TECHNICAL CHARACTERISTICS OF THE FOLLOWING ECO60 PRODUCTS ARE DESCRIBED IN THE GREEN PAGES OF THE SYSTEM RANGE

Movement detector	Telephone/data connectors
Dimmer	Fixed anti black-out lamp

PROTECTION RATING OF THE ECO60 DOMESTIC RANGES INSTALLED ASSEMBLY

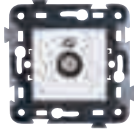
COMPONENT	INSTALLATION	REFERENCE STANDARDS	IP RATING
Device + support + plate set with closed front equipment (controls, ringers, indicators)	Flush-mounting civil or similar finishing in vertical position installed in a workmanlike manner.	EN60529 (CEI 70-1)	41
Device + support + plate set with open front equipment (sockets, etc.)	Flush-mounting civil or similar finishing in vertical position installed in a workmanlike manner. Suitable for use for 3ones of rooms with baths or showers		X1
Device + support + plate set with open front equipment (sockets, etc.)	Flush-mounting civil or similar finishing in vertical position installed in a workmanlike manner with plug inserted		4X

SIGNAL TAKE-OFF

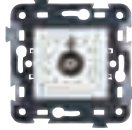
TV-SAT SOCKETS

Reference standards. EN 50083-1; EN 50083-2; EN 50083-4

GW 34 261
GW 34 264
GW 34 361
GW 34 364



GW 34 241
GW 34 244
GW 34 341
GW 34 344



GW 20 277



TECHNICAL DATA

Frequency range	: From 5 to 2400MHz
Shielding	: Class A
User port (GW 34 241 + GW 34 344)	: Coaxial connector IEC male Ø 9.5 mm
User port (GW 34 261 + GW 34 364)	: Coaxial connector type F (Female)

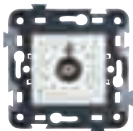
Attenuation values

Code GEWISS	Nominal attenuation (dB)	Attenuation / Passing loss (response flatness)				Branching attenuation / Base loss (response flatness)				Directivity		Return loss (dB)	
		Return channel	TV	SAT		Return channel	TV	SAT		Return channel	TV-SAT	Return channel	TV-SAT
		5-40MHz	47-862MHz	950-2150MHz	2150-2400MHz	5-40MHz	47-862MHz	950-2150MHz	2150-2400MHz	5-40MHz	47-2400MHz	5-40MHz	47-2400MHz
GW 34 241 - GW 34 261 GW 34 341 - GW 34 361	0	-	-	-	-	≤ 0.5 dB (≤ 0.2 dB)	≤ 0.5 dB (≤ 0.5 dB)	≤ 0.8 dB (≤ 0.5 dB)	≤ 0.8 dB (≤ 0.5 dB)	-	-	≥ 10 dB	in compliance with EN 50083-4
GW 34 244 - GW 34 264 GW 34 344 - GW 34 364	14	≤ 1.5 dB (≤ 1 dB)	≤ 1.2 dB (≤ 1 dB)	≤ 2.2 dB (≤ 1.5 dB)	≤ 2.5 dB (≤ 1.5 dB)	15 dB (± 1.5 dB)	14.5 dB (± 1.5 dB)	14.5 dB (± 1.5 dB)	15 dB (± 2.5 dB)	≥ 15 dB	EN 50083-4	≥ 10 dB	≥ 10 dB

TV SOCKETS

Reference standards. EN 50083-1; EN 50083-2; EN 50083-4; EN 50083-7

GW 34 246



Attenuation values

Code GEWISS	Nominal attenuation (dB)	Attenuation / Passing loss (dB)		Branching attenuation / Base loss (dB)		Directivity	Return loss (dB)
		TV		TV			
		47-862MHz		47-862MHz			
GW 34 246 - GW 34 346	0	-	-	≤ 0.5	-	EN 50083-4	

TV-R SOCKETS

GW 34 275
GW 34 276
GW 34 277



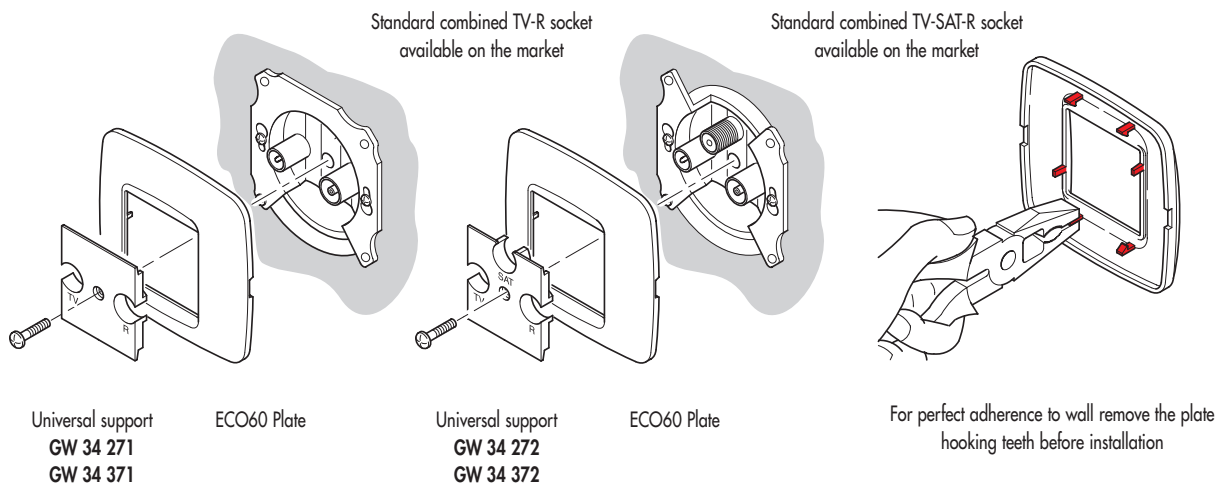
TECHNICAL DATA

Frequency range	: From 40 to 862MHz
Shielding	: With metal strip
Wiring system	: Screw terminals
User port	: Coaxial cable IEC female Ø 9.5 mm - R
	: Coaxial cable IEC male Ø 9.5 mm - TV

Attenuation values

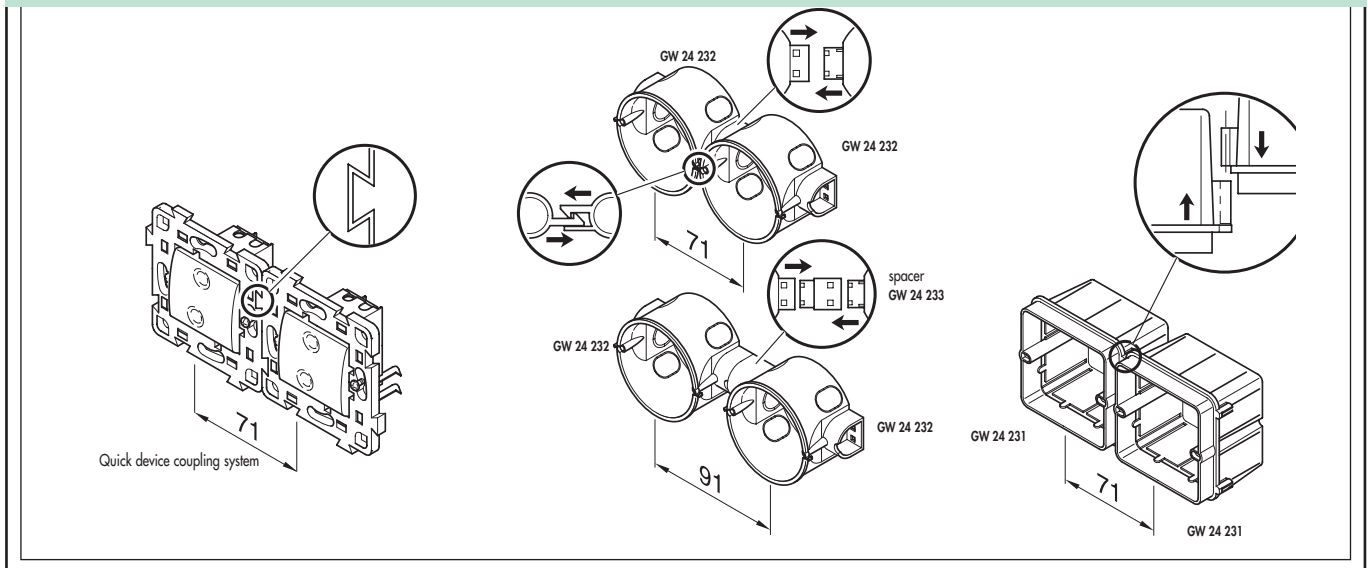
Code Gewiss	Description	Nominal attenuation (dB)	Attenuation / Passing loss (dB)		Branching attenuation / Base loss (dB)		Directivity dB		Return loss (dB)	
			FM	TV	FM	TV	FM	TV	FM	TV
GW 34 275	Direct	0	-	-	≤ 0.7	≤ 0.5	-	-	EN 50083-4	EN 50083-4
GW 34 276	Inductive	14	≤ 1.2	≤ 1.2	≤ 17	≤ 12	EN 50083-4	EN 50083-4	EN 50083-4	EN 50083-4
GW 34 277	Terminated	10	≤ 1.3	≤ 1.5	≤ 12	≤ 9	EN 50083-4	EN 50083-4	EN 50083-4	EN 50083-4

Installation of universal supports for combined tv-sat-r sockets

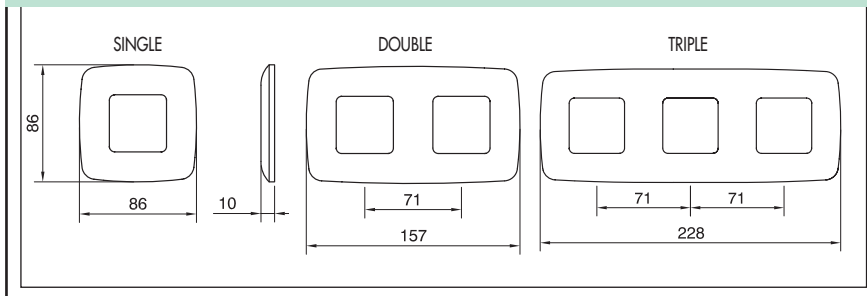


DIMENSION TABLES

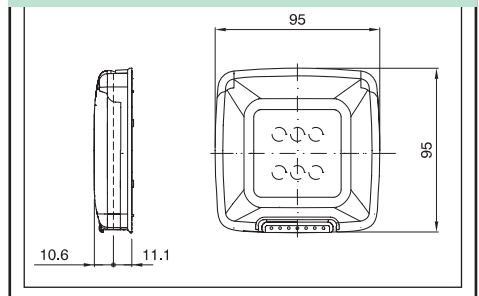
COUPLING OF DEVICES AND BOXES



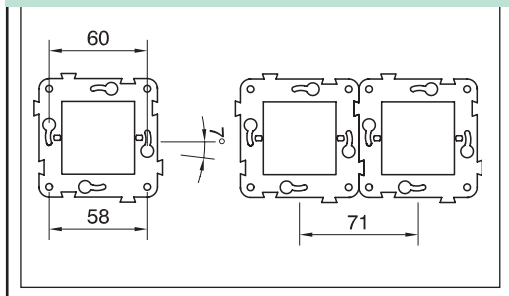
PLATES ECO60



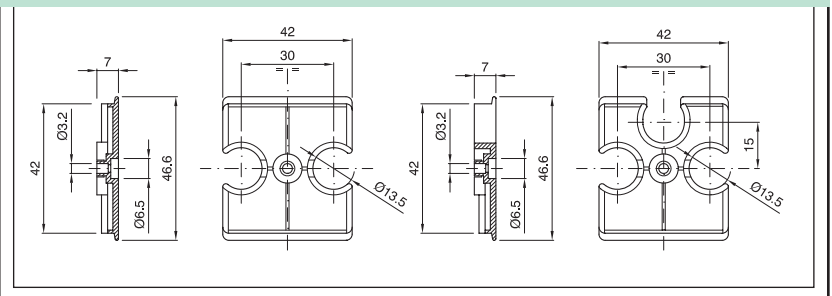
ECO60 WATERTIGHT PLATES



DEVICES



UNIVERSAL SUPPORTS FOR COMBINED TV-SAT-R SOCKETS



ECO60 WALL-MOUNTING BOXES

