

# Glob

## GIVES CHARACTER TO YOUR SPACE

Globes for lighting public residential parks and gardens. Polycarbonate spheres - glow wire 850° C or made out of high module methacrylate. Version for discharge lamps with auxiliary electrics integrated into the base. All the versions have double insulation.

Preconfigured multiple kits available to simplify the choice of components to use. An antiglare louvre is provided among the accessories to screen the light emitted towards the celestial arch.

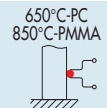
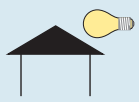


# GLOB RANGE

GLOBES FOR DECORATIVE LIGHTING IN RESIDENTIAL AND URBAN AREAS

**GEWISS**

## CHARACTERISTICS AND ADVANTAGES



GLOB RANGE



### CHOICE

Polycarbonate or high module methacrylate globes to favour a self-extinguishing level of 850° C as well as the transparency.

### SAFETY

Greater protection against electric shock and elimination of earth connection devices. All the versions have double insulation wiring.

### RAPID AND SECURE INSTALLATION

The bayonet closure with anti-vandalism screw guarantees protection against possible tempering.



### TEMPERATURE REDUCTION

The heat protection cover allows a reduction of 75% of the maximum temperature reached by the globe therefore extending the lifespan of the product.

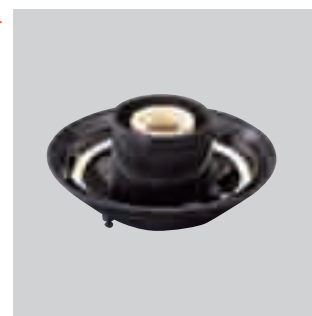
### REDUCTION OF THE LIGHT FLUX DISPERSED ABOVE

The use of the antiglare louvre lowers the flux dispersed to the celestial arch by 80%. Furthermore, the antiglare louvre carries out the function of a heat protection cover. Accessory to be used on transparent and frosted globes.



### THE GLOB BASES

There are two diameters available (Ø 153 for Glob 25 and 30 and Ø 220 for Glob 40) both in versions for incandescent lamps or compact fluorescent lamps with integrated power supply, and for sodium and mercury discharge lamps. All the versions of the GLOB bases have two installation types - post head Ø 60 and arm.



# GLOB RANGE

GLOBES FOR DECORATIVE LIGHTING IN RESIDENTIAL AND URBAN AREAS

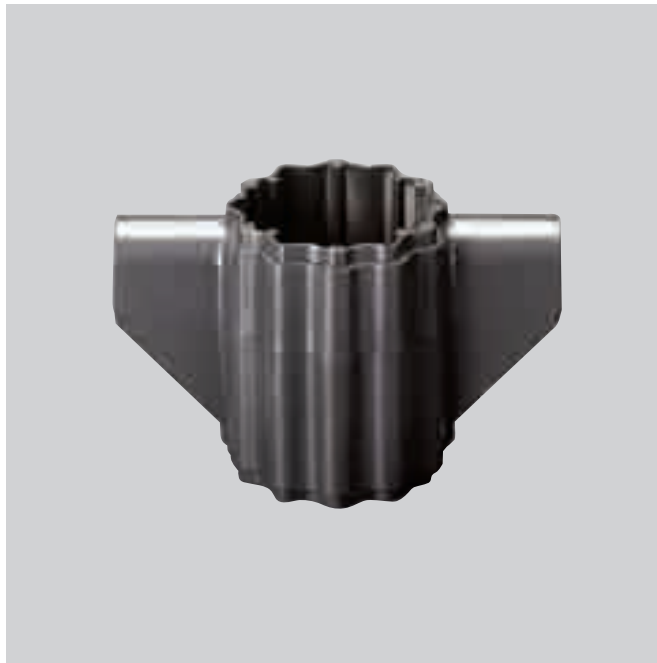


## CHARACTERISTICS AND ADVANTAGES

### ROBUSTNESS

The technical components are all made entirely out of die-cast aluminium with stainless steel fixing screws.

The corrosion resistance is guaranteed through chromatising treatment with Alodine 1200 and through paintwork with smoke grey polyester powder for external use.

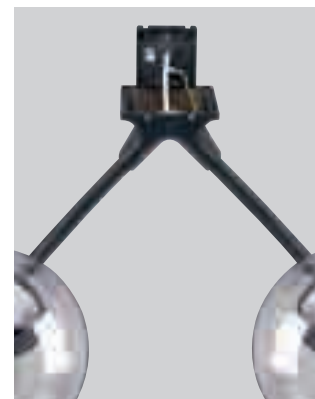


GLOB RANGE



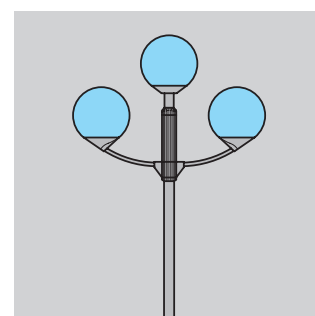
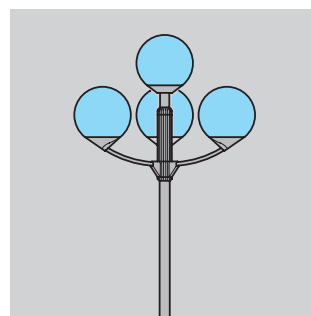
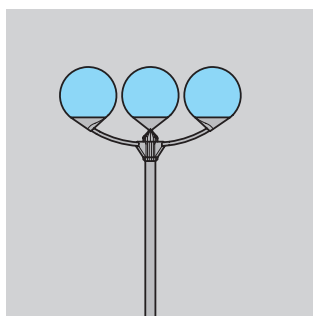
### WALL MOUNTING VERSIONS

The accessories for wall mounting of the individual and twin globes are equipped with a die-cast aluminium counterplate, 3pole terminal and retaining ties thus facilitating installation and maintenance work.



### SOLUTIONS SPANNING ALL AREAS

Possibility of individual and multiple compositions, wide range of technical components for the specific requirements involved in urban, residential and service sector solutions.



# GLOB RANGE

GLOBES FOR DECORATIVE LIGHTING IN RESIDENTIAL AND URBAN AREAS

**GEWISS**

## CHARACTERISTICS AND ADVANTAGES

### GLOB MODULARITY - STEEL/FIBREGLASS POLE

METHACRYLATE - POLYCARBONATE



ANTIGLARE LOUVRE



COVERS



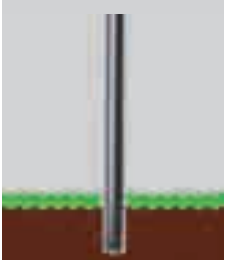
DISCHARGE



INCANDESCENT



EMBEDDED



COUNTERPLATE



STEEL/FIBREGLASS

GLOB RANGE

# GLOB RANGE

GLOBES FOR DECORATIVE LIGHTING IN RESIDENTIAL AND URBAN AREAS

GEWISS

## CHARACTERISTICS AND ADVANTAGES

### GLOB MODULARITY - STEEL POLE

METHACRYLATE - POLYCARBONATE



COVER



ANTIGLARE LOUVRE



DISCHARGE



INCANDESCENT

BASE CONNECTION



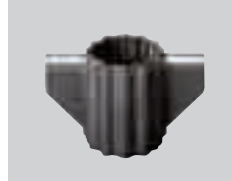
COVER



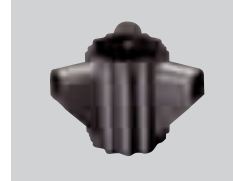
SPACER COMPONENT



ARM 2 FIXING



ARM 3 FIXING



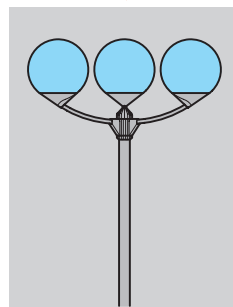
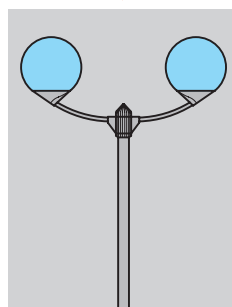
EMBEDDED



COUNTER PLATE



STEEL



GLOB RANGE