

NP 42 RANGE

TRUNKING SYSTEMS USED AS SKIRTING AND FRAME

GEWISS

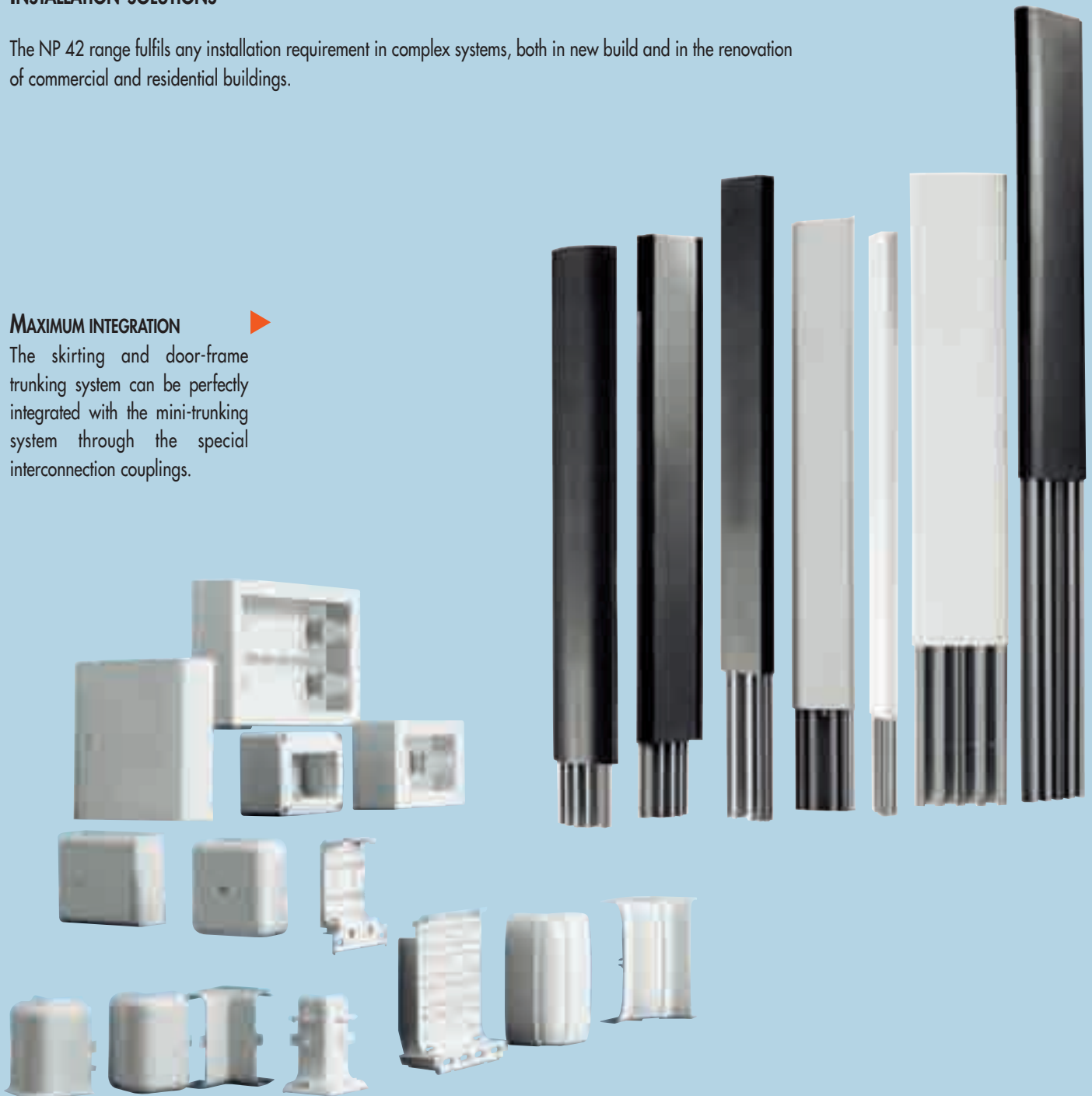
CHARACTERISTICS AND ADVANTAGES

INSTALLATION SOLUTIONS

The NP 42 range fulfils any installation requirement in complex systems, both in new build and in the renovation of commercial and residential buildings.

MAXIMUM INTEGRATION

The skirting and door-frame trunking system can be perfectly integrated with the mini-trunking system through the special interconnection couplings.



SAFETY AND COLOUR HARMONY

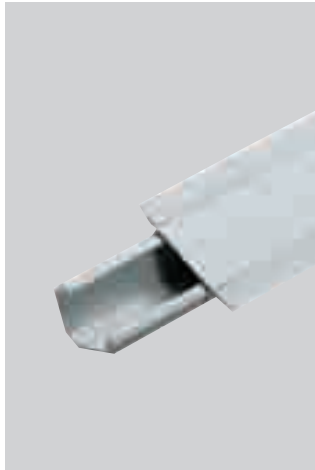
The interconnection accessories are all provided with internal dividers for each line; accessories and routing components are the same colour as the trunkings.

NP 42 RANGE

TRUNKING SYSTEMS USED AS SKIRTING AND FRAME

GEWISS

CHARACTERISTICS AND ADVANTAGES



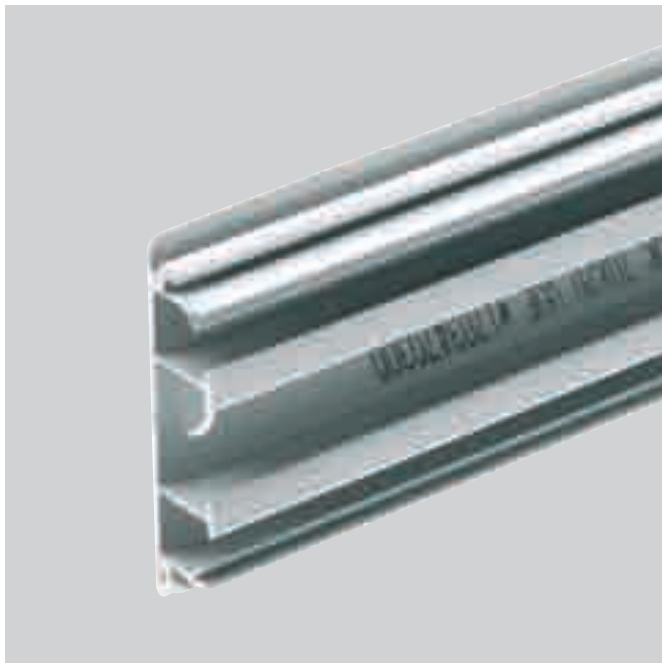
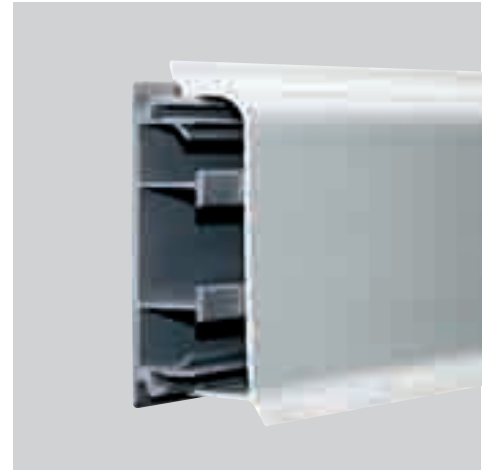
◀ EK 50x30

Corner trunking that can be painted or decorated. Can be adapted to any type of wall thanks to its flexible edges.

SLK 70x20

HIGHLY ADAPTABLE

The exclusive "Soft-Lips" system with soft edges in the same colour as the trunking is easily installed and provides a stylish finish.



◀ SLK-TUK 70x20

Skirting (SLK) and door frame (TUK) trunkings are simple to install as they both use the same type of three-compartment base onto which the covers can then be attached. A unique article code simplifies stock management.

ABK 85x20

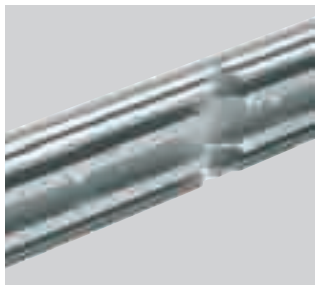
For over-floor trunking with the base divided into compartments to keep the circuits separate. It can withstand compression by heavy weights. Flexible edges to adapt to uneven floors. Scratchproof surface and dust reducing structure.



◀ SLK 120x25

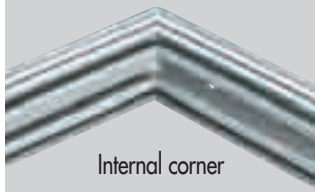
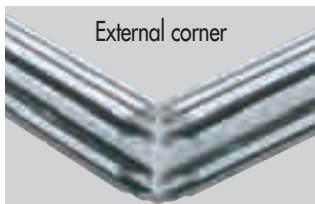
Subdivided into four compartments for installation as both skirting and door frame trunking with plenty of space for easy wiring. Special wiring covers avoid newly laid cables from accidentally coming out and keep circuits separate (for example, lines with different voltages). The range of accessories (for example junction boxes, couplings, device-holder boxes, variable corners) complete the range.

SLK-TUK 70X20 SKIRTING AND FRAME TRUNKING



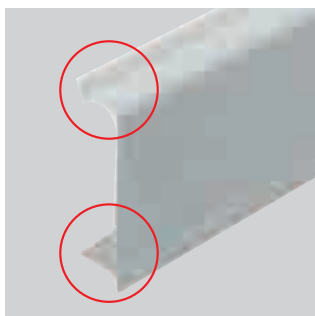
◀ BASE

Same base for skirting and frames, the symmetrical shape prevents installation errors. **Sub-divided into compartments.** Internal separation into 3 compartments can house circuits with differing nominal voltages (E.g. motive power, data transmission, telephone). **Base groove.** This feature enables the creation of corners of precisely 90° in perfect alignment with the rest of the base. Can be used both as skirting and frame covers.



◀ JUNCTION BOX

Can be used as a T junction for 70X20 mm frame trunking as well as a junction for all mini-trunking, single- and double-trunking of the MINI range.



◀ SLK 70X20 SKIRTING COVER

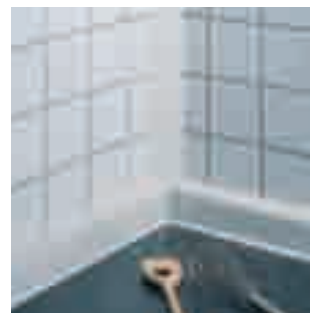
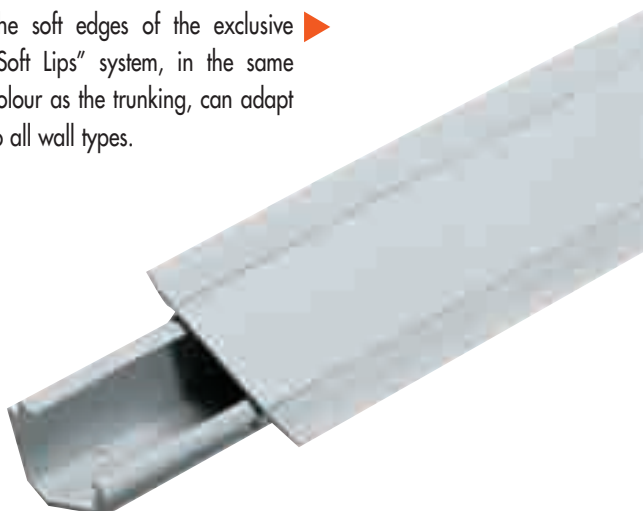
The soft edges of the exclusive "Soft Lips" system, in the same colour as the trunking, can adapt to all floor and wall types without leaving gaps and the consequent build-up of dirt. The result is a surface which is extremely easy to clean as well as being visually pleasing.

▲ FRAME/BOX CONNECTOR

The exclusive connection system between couplings and device-holder boxes means that control points and power and/or signal take-off points can be speedily installed and the device-holder boxes turned to suit requirements.

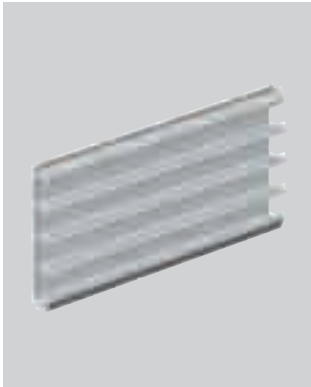
EK 50X30 CORNER TRUNKING

The soft edges of the exclusive "Soft Lips" system, in the same colour as the trunking, can adapt to all wall types. ▶



▲ The surface can be painted and decorated (e.g. with wallpaper or wall fabric,) so that the trunking is hardly noticed at distances over 2 metres. The symmetrically-shaped base is completely reversible and prevents any type of installation error.

SLK 120X25 SKIRTING AND FRAME TRUNKING



◀ BASE

The symmetrically-shaped base, the same for skirting and frame, is completely reversible and prevents any type of installation error. The internal separation in 4 compartments makes it particularly suitable when a well defined repartition of the circuits is required and/or when strong electrification is needed.



◀ BASE/UNIT SPACER

The accessory supplied with the base has been designed in order to carry out the installation of the base, in a safe and practical way, in compliance with the regulations concerning installation.



◀ INSTALLATION CHARACTERISTICS

- (1) The device-holder boxes are fixed separately from both the skirting board and the frame and the installations are positioned external to the skirting board/frame.
- (2) The skirting trunking/frame ensures a continuous separation even near junction, coupling and fixing components for device-holders in compliance with CEI 23-19 tolerances
- (3) The dimensions of the skirting trunking/frame compartments ensure the following minimum capacity:
 - * 6 cables ϕ 4.5 mm + 5 cables ϕ 3.5 mm in the energy compartment.
 - * 2 cables ϕ 8 mm in the telephone and auxiliary services.
- (4) Those components which carry out a mechanical protection of the cables and of the active parts can be disassembled with a tool.

ABK 85X25 OVER-FLOOR TRUNKING

The flexible edges allow the trunking to adapt even to those floors which are not perfectly flat. The scratchproof surface keeps its finish over time, while the specially designed structure ensures protection against dust and dirt. The base is shaped so that it can support heavy compression stress. The separation into compartments allows division of different nominal voltage circuits.



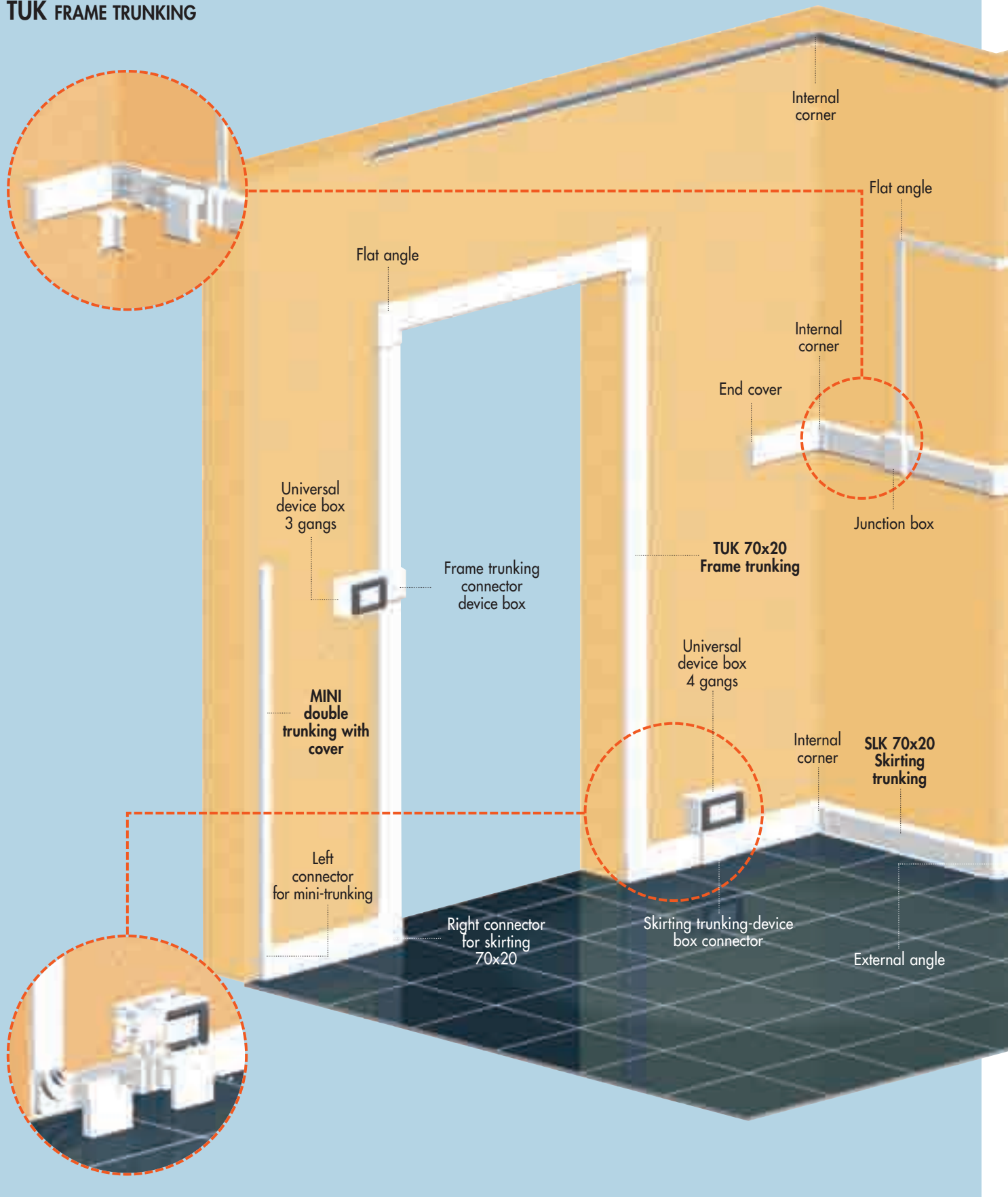
NP 42 RANGE

TRUNKING SYSTEMS USED AS SKIRTING AND FRAME



CHARACTERISTICS AND ADVANTAGES

SLK 70X20 SKIRTING TRUNKING TUK FRAME TRUNKING

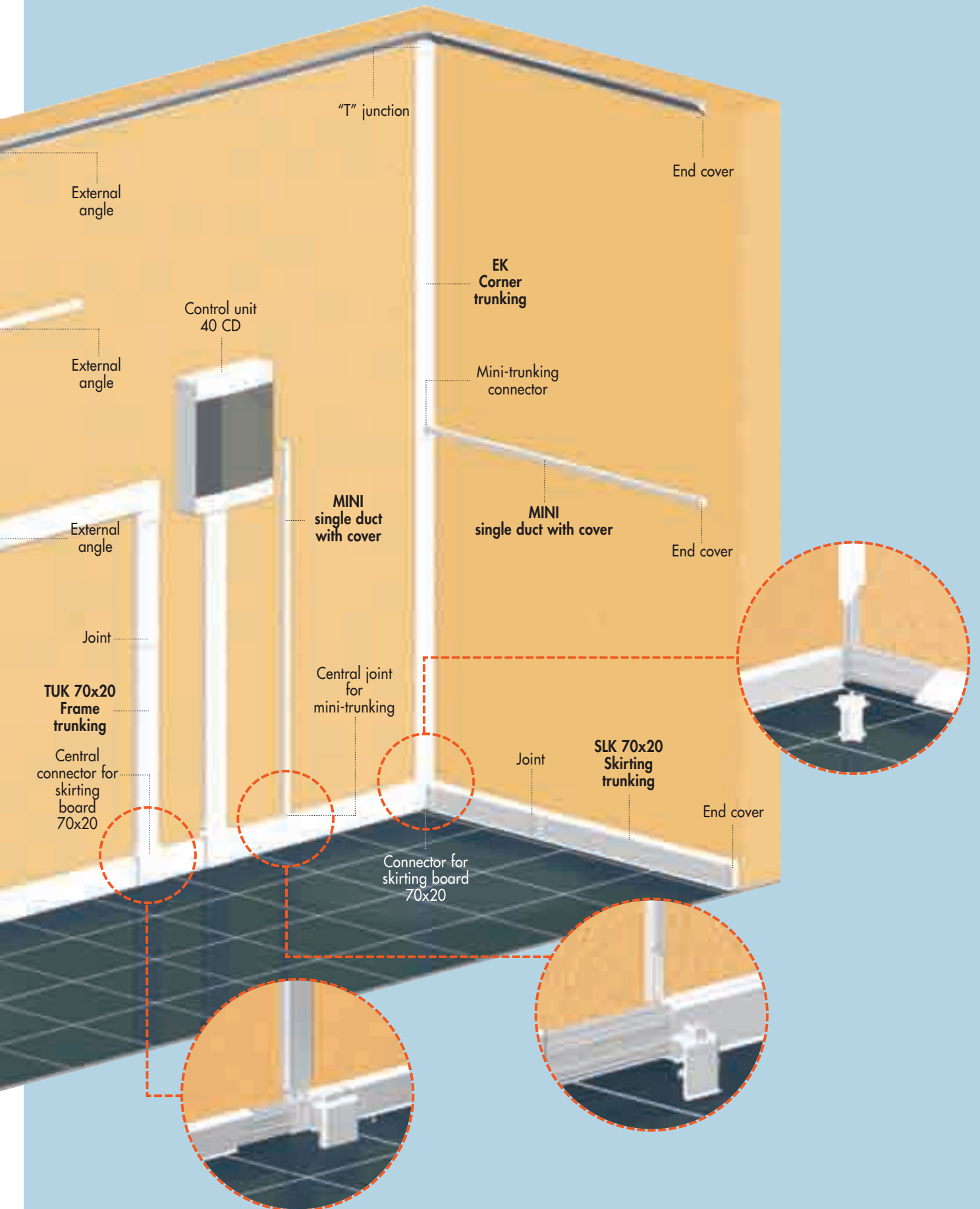


NP 42 RANGE

TRUNKING SYSTEMS USED AS SKIRTING AND FRAME



CHARACTERISTICS AND ADVANTAGES



NP 42 RANGE

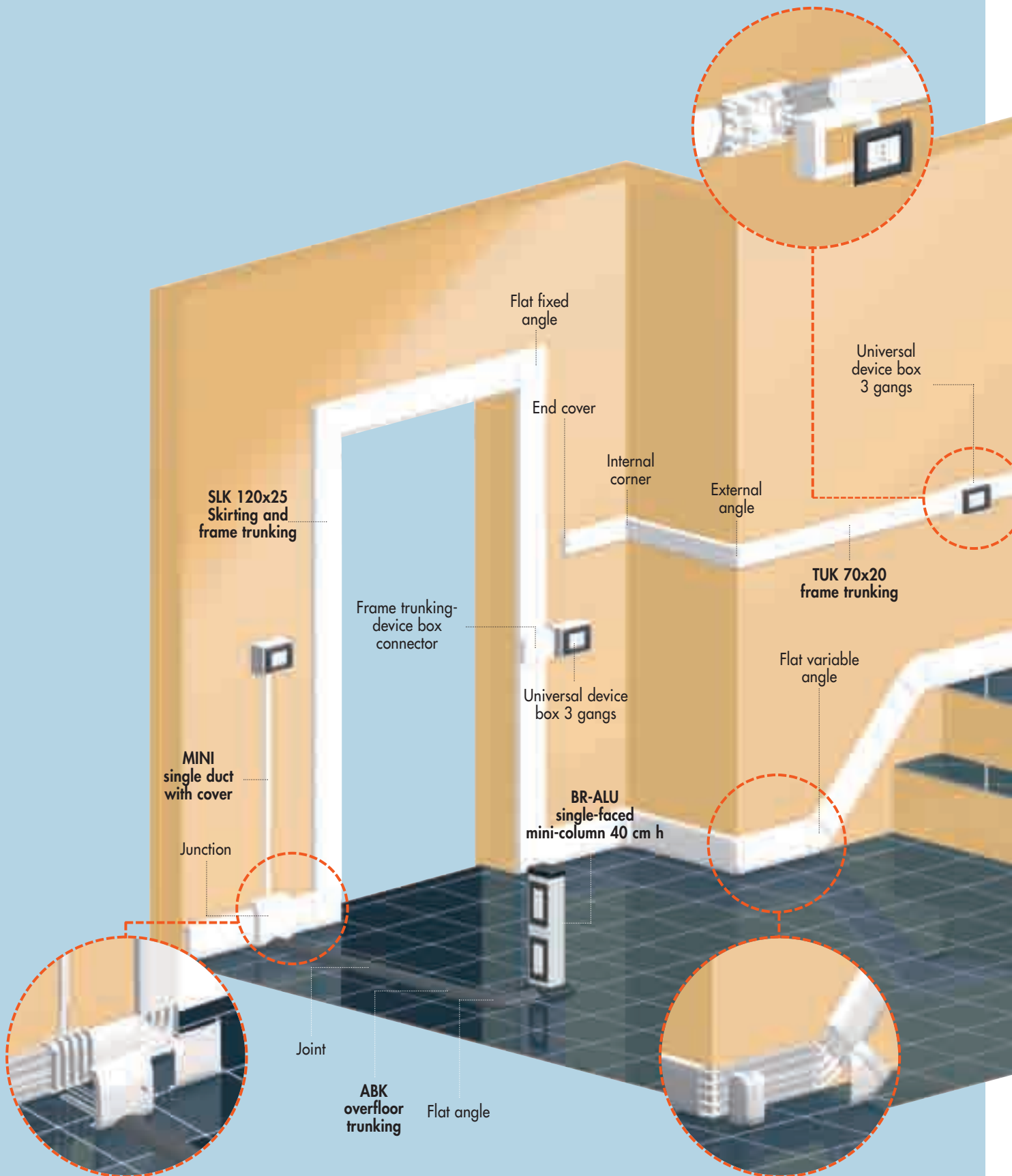
NP 42 RANGE

TRUNKING SYSTEMS USED AS SKIRTING AND FRAME



CHARACTERISTICS AND ADVANTAGES

SLK 120X25 TRUNKING FOR USE AS SKIRTING BOARD AND FRAME



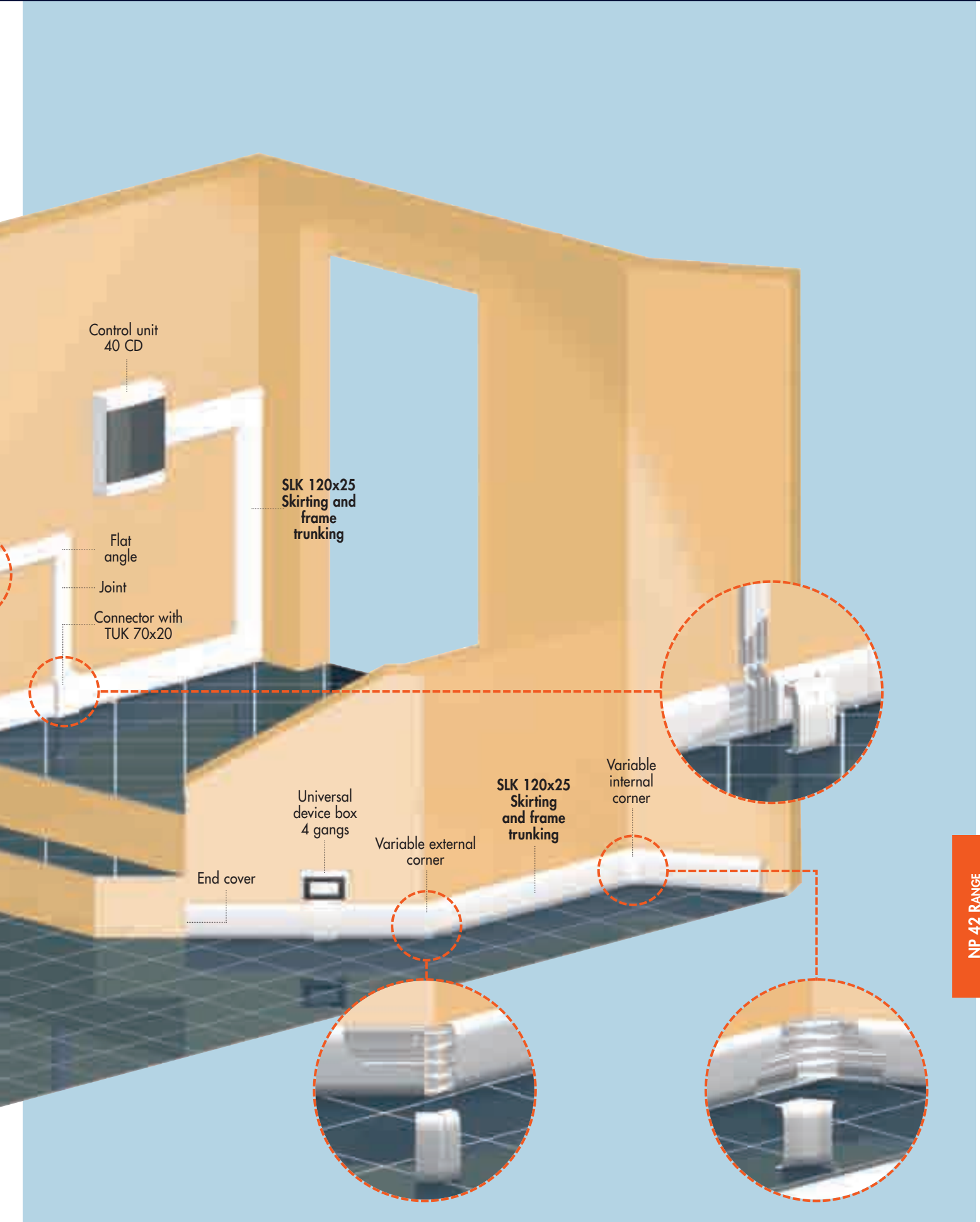
NP 42 RANGE

NP 42 RANGE

TRUNKING SYSTEMS USED AS SKIRTING AND FRAME

GEWISS

CHARACTERISTICS AND ADVANTAGES



NP 42 RANGE