

46 RANGE

WATERTIGHT SURFACE-MOUNTING BOARDS FOR AUTOMATION AND DISTRIBUTION

GEWISS

CHARACTERISTICS AND ADVANTAGES

46 RANGE

VERSATILE USE AND INSTALLATION

The 46 Range watertight automation and distribution boards come in 4 lines featuring the following types of materials: thermoplastic (44 CEP), thermo-setting (46 QP), metal (46 QM) and stainless steel (46 QX). They offer high structural strength, quick installation and maximum accessibility.



SIMPLIFIED CABLING AND MAINTENANCE

Removable frame, adjustable depth uprights, doors and inner doors can be hinged on both sides.



INTEGRATION AND SYNERGY

The accessories, shared across the range, ensure maximum flexibility with only few references.

46 RANGE

WATERTIGHT SURFACE-MOUNTING BOARDS FOR AUTOMATION AND DISTRIBUTION

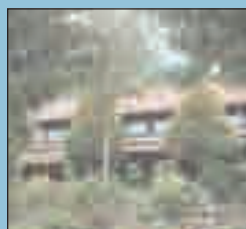


CHARACTERISTICS AND ADVANTAGES

APPLICATIONS RANGE 46

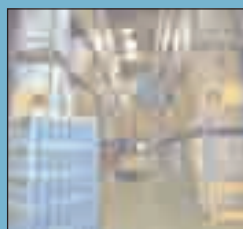
46 RANGE

RESIDENTIAL



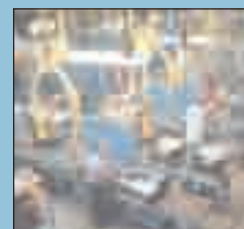
Installation in covered areas protected against atmospheric agents with aesthetic/functional and performance requirements

COMMERCIAL



Installation in open areas or those exposed to water.

INDUSTRIAL



Installation in heavily polluted areas, exposed to aggressive agents and sprays of water.



44 CEP

A small board in thermoplastic material for protection devices or the control of automated processes. Ideal for feeding small users (pumps, electric gates, lifts, air conditioning systems). Thanks to the panels with window it is possible to installed both modular and moulded devices even for industrial sector applications.



46 QP

Board in polyester, with IP 65 protection rating, suitable for solving any system need both indoors and outdoors: service sector areas (warehouses, supermarkets or garages) and even very dusty environments (harbour areas, pharmaceutical industry, painting rooms or joineries).



46 QM

Metal board used in interiors. Ideal for industrial use as department distribution board, also for feeding large users or as a board for control and automation.



46 QX

Stainless steel board ideal for protection against aggressive chemicals, oils, greases and mechanical stress. Used in the food, chemical and petrochemical industry, foundries and rolling mills.

46 RANGE

WATERTIGHT SURFACE-MOUNTING BOARDS FOR AUTOMATION AND DISTRIBUTION

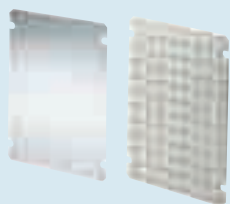


CHARACTERISTICS AND ADVANTAGES

46 RANGE

ASSEMBLY OF NON-MODULAR DEVICES

Thanks to the back-mounting plates in galvanised sheet or insulating material.



DOUBLE INSULATION

Obtainable by means of screwcaps or fixing brackets in resin, zinc-tropicalized steel or s/steel.

HIGH STRUCTURAL RESISTANCE AND QUICK INSTALLATION

Container executed in a single piece.

44 CEP - BOARDS IN GW PLAST 120

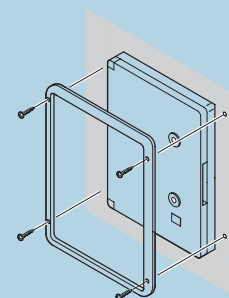
HALOGEN-FREE MATERIAL



Door with 180° opening.

INSTALLATION OF MODULAR AND BOXED DEVICES UP TO 160 A

Thanks to the panels with windows complete with DIN rail fixing uprights (excluding GW 44 808 and GW 44 818 boards).



Frame for semi-flush mounting (supplied).

46 QP - BOARDS IN FIBREGLASS- ENRICHED POLYESTER

HALOGEN-FREE MATERIAL



SIMPLIFIED WIRING

Thanks to the removable frame.

REVERSIBLE DOOR AND INSIDE DOOR

MAXIMUM ACCESSIBILITY INSIDE THE BOARD

Door and inside door can be hinged on both sides with opening of over 180°.

QUICK INSTALLATION OF MODULAR DEVICES

Thanks to direct fixing of DIN rails onto inside walls.

46 RANGE

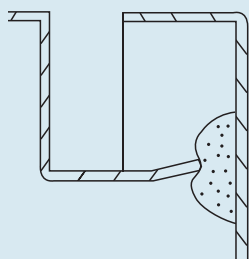
WATERTIGHT SURFACE-MOUNTING BOARDS FOR AUTOMATION AND DISTRIBUTION

GEWISS

CHARACTERISTICS AND ADVANTAGES

WATER PROTECTION

Special "gutter-shaped" seal.

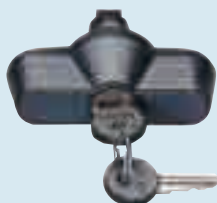


PRACTICAL

Starting from 405x650x200 mm size the back is drilled and provided with plate for cable ingress.

SAFETY

Possibility of using the key lock with handle.



46 QM - BOARDS IN METAL



◀ **LASTING TRANSPARENCY AND RESISTANCE OF WINDOW**
Toughened serigraphed glass.

◀ **MAXIMUM ACCESSIBILITY INSIDE THE BOARD**
Door with 180° opening and inner door interchangeable on both sides.

46 QX - BOARD IN STAINLESS STEEL



◀ **HIGH STRUCTURAL RESISTANCE**
Executed in one piece with all joined elements seam-welded.

◀ **HIGH PRODUCT QUALITY**
Thanks to the use of AISI 304 type steel.

46 RANGE