

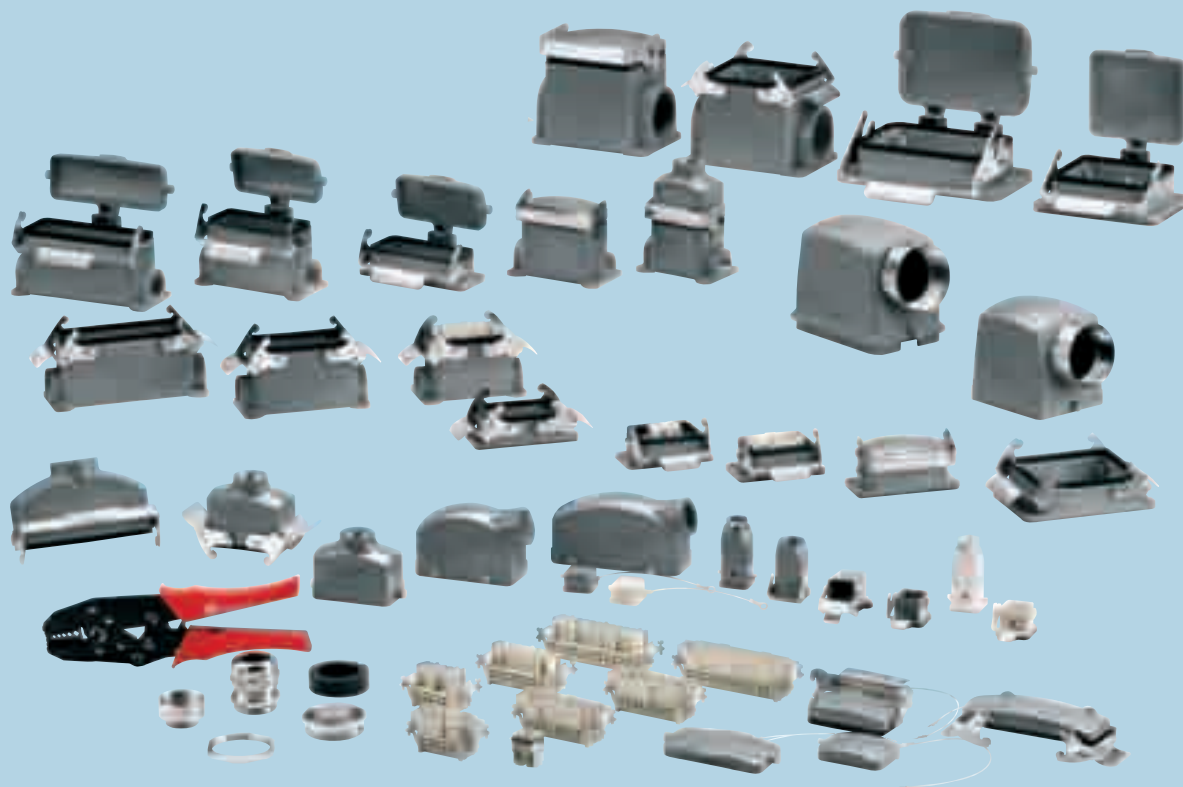
CONNECTION IS GEWISS

The industrial connection system GEWISS is completed by a new range of multi-polar connectors, to meet all installation requirements in the industrial sector.

THREE INTERNATIONAL PATENTS

COMPLIANCE TO
EN 61984
UL 1977

AESTHETIC DESIGN PATENT
CLOSING SYSTEM
CONDUCTOR CLAMPING



FULL RANGE OF JUNCTIONS

- Screw connection.
- Screw connection with terminal block.
- Crimping connection.

FULL RANGE OF CASES

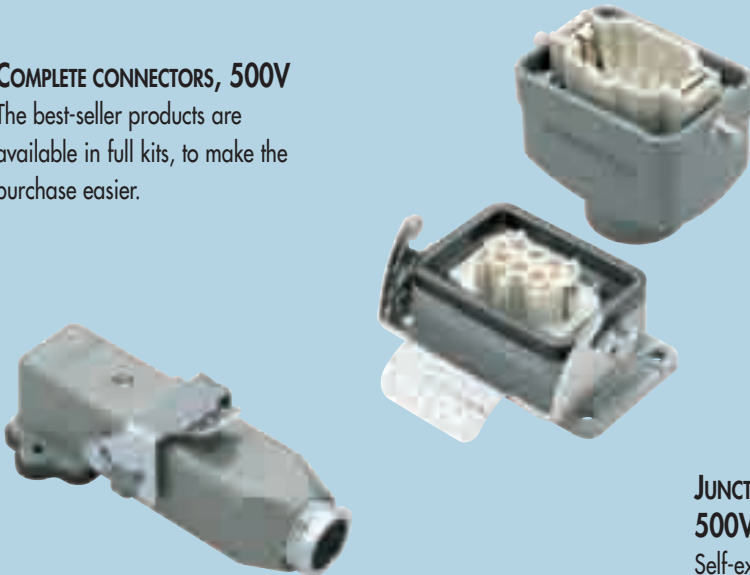
- Metal (aluminium alloy) or insulating material.
- Movable cases (standard or deep versions) and fixed for surface or flush-mounting
- With metric thread and PG.
- With single (1 lever) or double lock (2 levers).

MULTIPOLAR CONNECTORS

The 76 CO range multipolar connectors have been created to ensure electric connections, both power and signal, in all industrial environments, also with chemical and mechanical agents or thermal stress. The range is so wide, over 500 codes, that all application requirements can be satisfied as regards industrial installations, production lines, applications in the robotics field and near machinery.

COMPLETE CONNECTORS, 500V

The best-seller products are available in full kits, to make the purchase easier.



JUNCTIONS IN TECHNOPOLYMER 500V

Self-extinguishing UL 94 V0 and Glow Wire Test 960°.



FIXED CASES

- For surface and flush-mounting
- PG and M metric thread
- Single (1 lever) or double lock (2 levers)
- With or without protection cover



MOVABLE CASES

- Standard or deep
- PG and M metric thread
- Single (2 pegs) or double lock (4 pegs)
- Horizontal or vertical outlet
- Versions with levers and seal for trailing connections



HIGH VOLTAGE CONNECTORS, 830V

- Junctions with 2 safety auxiliary contacts
- Insulated cases



ACCESSORIES AND COUPLINGS

- IP65 and IP68 cable glands, in plastic and metal
- Sheath couplings
- Enlarging adapters
- Closing caps
- Fixing nuts

DIE-CAST ALUMINIUM JUNCTION BOXES

The range of connection and junction boxes, integrated by the 76 CO multipolar connectors range, is the winning solution for systems in heavy duty environments such as: industrial plants, automation, robotics, systems near machinery, thermal, chemical and petrochemical installations.

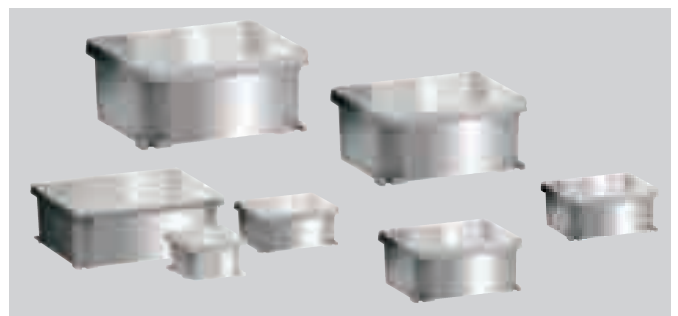
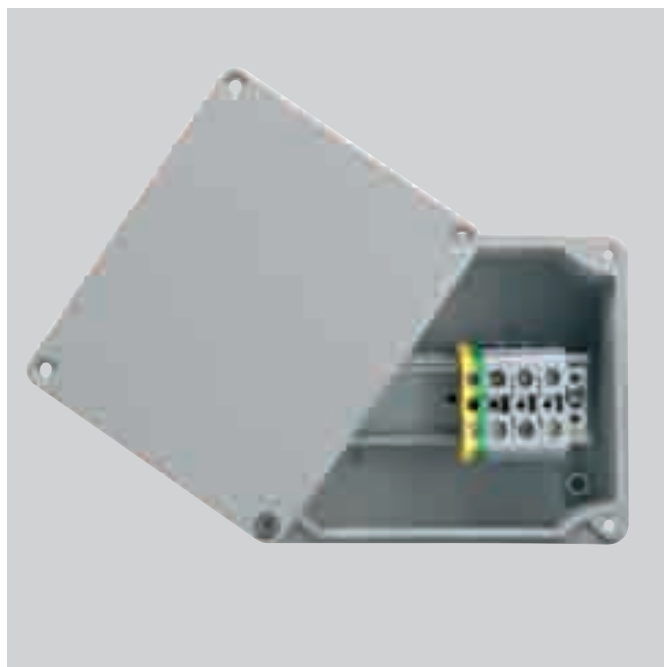
7 DIMENSIONS

PRACTICAL

- Equipment for internal/external surface-mounting.
- Unloosable fixing screws for covers in stainless steel.
- Earth terminal both on the bottom and on the cover.

VERSATILITY

Equipment for assembly of back-mounting plate and DIN rail.



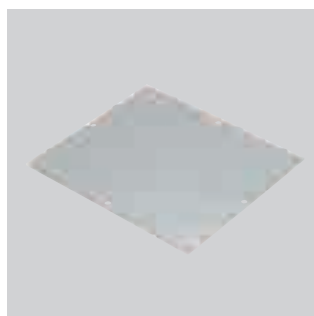
STRENGTH

- Thickness is optimised to ensure maximum mechanical resistance and to withstand the worst that climate and environment can offer.
- The perimeter edge strengthens the walls and acts as a reference point for positioning single boxes alongside.



BACK-MOUNTING PLATES

Galvanised steel back-mounting plates.



3 VERSIONS:

- PAINTED
- NON PAINTED
- ATEX

A HOST OF APPLICATIONS



PRODUCTION LINES

The use of multipolar connectors in production lines, especially in the smaller sizes, enables total control of energy and information flows needed for the production process.

ON BOARD MACHINERY

The typical application for MULTIPOLAR CONNECTORS: enables full operation including control circuits despite the presence of oil, corrosive substances, dust and mechanical agents.



The ALUMINIUM JUNCTION BOXES TOO are strong and resistant enough for applications on board machinery.



DISTRIBUTION BOARD

The power and signal circuits leave the main protection and control board and guarantee the functioning of the entire system (production lines, on board machinery and other applications).



MOBILE MACHINERY

On machine tools and operating tools the multipolar connector enables a variety of command and control operations, guaranteeing a quick safe connection.

ERGONOMIC DESIGN



DESIGN

Aesthetically pleasing rounded shape for the movable case.

GEWISS PATENT

ERGONOMY

Anti-slip design for an ergonomic grip.



AESTHETIC APPEAL

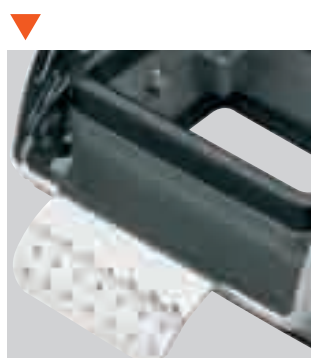
Colour (RAL 7037 grey) ideal for industrial environments since it does not show the dust.

PATENTED INNOVATIONS



▶ PATENTED LOCKING SYSTEMS

New easy and ergonomic lever locking system. The pegs are not painted but riveted and made of stainless steel and therefore protected against the deterioration caused by constant opening and closing.



GEWISS
PATENT

▶ CONNECTION PLATE

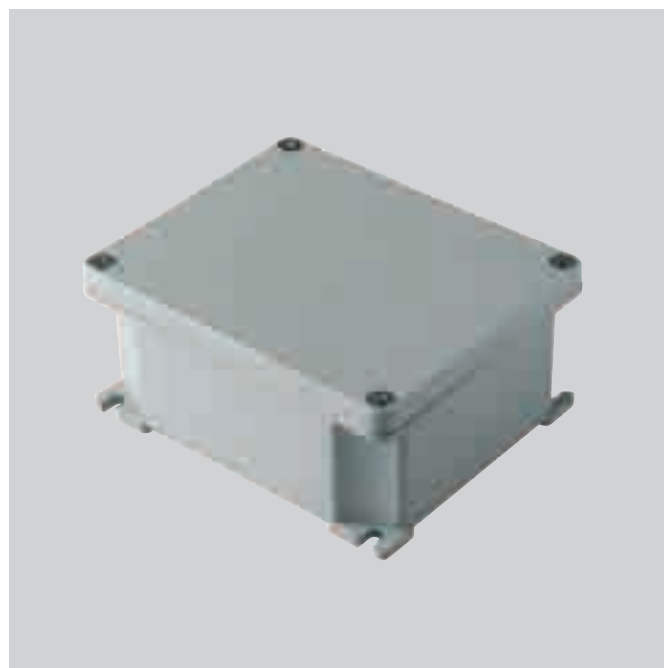
The connection system using plates and stainless steel screws requires only stripping of the conductor, without any other preparation.



GEWISS
PATENT

▶ VERSATILE BOX

The boxes are extremely versatile with the perimeter edge acting as a reference, suitable for fitting both indoors and outdoors and predisposed for DIN rail assembly.



76 CO RANGE

CHARACTERISTICS AND ADVANTAGES

JUNCTIONS AND CASES 3 AND 4 POLES, 10A - 250V

UL/cUL CERTIFICATION

Cases in insulating material or die cast aluminium in the fixed and movable versions.

The UL 94 V0 self-extinguishing technopolymer glass fibre junctions are made as one piece and guarantee correct functioning between -40°C and +125°C.

The connectors, which must not be coupled or uncoupled while mains connected, have a mechanical duration equivalent or superior to 500 coupling cycles.

Monobloc lever closing system in thermoplastic for insulating cases and in steel for metal cases.



IP 65 cable gland with three/four seals to suit a wide range of cable diameters; IP68 cable glands are also available and a wide range of couplings.

Thread with PG or M pitch.

Contact positions numbered on both sides of socket plug and output junctions.

Special seals guarantee the maintenance of IP 65 protection rating over time.

Contacts in silver plated brass, with clamping by unloosable cross head screws.

76 CO RANGE

CHARACTERISTICS AND ADVANTAGES

JUNCTIONS AND CASES 6, 10, 16, 24, 32, 48 POLES, 16A - 500V

UL/cUL CERTIFICATION

The connectors, which must not be coupled or uncoupled while mains connected, have a mechanical duration equivalent or superior to 500 coupling cycles.

IP 65 cable glands with three/four seals to suit a wide range of cable diameters; IP68 cable glands are also available and a wide range of couplings.

Attractive and innovative case design: the rounded shape optimises the interior spaces and the anti-slip design of the handle ensures a firm and safe grip.

The UL 94 V0 self-extinguishing technopolymer glass fibre junctions are made as one piece and guarantee correct functioning between -40°C and +125°C.

Carefully chosen materials:

- special anti-age seals;
- springs and pegs subject to a lot of wear and tear are made of stainless steel;
- closing lever and junction fixing screws are in steel.

Earth terminal with maximum contact surface.

The connection system of the conductor and the clamping screws in stainless steel guarantees the stability of the electrical contact over time.

Contact positions numbered on both sides of plug and socket junctions.

830V junctions cannot be accidentally inserted in the 500V cases.

The die cast aluminium alloy painted with epoxy polyester powder guarantees total reliability even under the most difficult conditions.

Innovative easy and ergonomically designed lever locking system.

